

Picnicking

Facilities are provided for family and group picnics upon payment of a nominal fee. The right is reserved to assign such facilities for a limited period of time so that others may share in their use.

Picnic fires must be confined to the metal stoves and fireplaces provided or to stoves brought by the picnicker subject to approval by a park officer. Charcoal may be purchased at the park.

Washington Grove along the river bank is a favorite location for individual picnic parties. At Sullivan Grove there are accommodations for large groups with the adjoining playfield as an added attraction. Green and Chestnut Groves, and nearby playfields along Steel Run, are favored by individuals and small groups who prefer the seclusion of this woodland setting. Playground equipment for children also is provided at these areas.

Help Us Maintain a Clean Park

Litter along drives, on lawns and in recreation areas detracts from the natural beauty of the park and requires costly cleanup services. The money involved will be better directed toward improvements and additional facilities. Please use the trash containers provided.

Administration

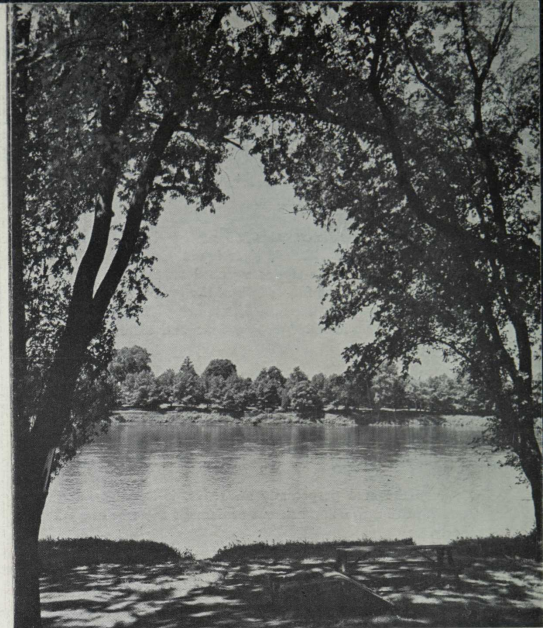
Arrangements for all uses of the park and detailed information may be obtained either in person at the park office or by addressing a letter to the Superintendent, Washington Crossing State Park, R.D. 1, Titusville, N. J. Arrangements and information also may be obtained by telephoning the park office.

The park is open the entire year.

FACILITIES AVAILABLE AT NEW JERSEY STATE FORESTS AND PARKS

STATE FORESTS	Acres	Archery	Bathhouse	Bathing Permitted	Boat Rental	Cabins	Camp Lepto	Camp Sites	Camp (Group)	Children's Playground	Fishing	Hiker Stages	Horseback Trails for Rent	Hunting	Lodge Rental	Lodge (Rooms)	Museum	Naturalist Services or Overlook	Observation Tower	Picnicking	Refreshments	Restaurant	Mailing Address
Bass River	8,418		*	*	*	*	*	*	*	*	*	*	*	*	*	*	*	*	*	*	*	*	New Gretna
Belleplain	6,492		*	*	*	*	*	*	*	*	*	*	*	*	*	*	*	*	*	*	*	*	Woodbine, R.D. 2
Green Bank	1,833		*	*	*	*	*	*	*	*	*	*	*	*	*	*	*	*	*	*	*	*	Egg Harbor City, R.D. 2
Abram S. Hewitt	1,890																						c/o Ringwood Manor
Jackson	43																						c/o Allaire
Jenny Jump	950						*	*	*	*	*	*	*	*	*	*	*	*	*	*	*	*	Hope
Lebanon	22,216		*	*	*	*	*	*	*	*	*	*	*	*	*	*	*	*	*	*	*	*	New Lisbon
Norvin Green	2,260																						c/o Ringwood Manor
Penn	3,318		*	*	*	*	*	*	*	*	*	*	*	*	*	*	*	*	*	*	*	*	c/o Bass River
Stokes	12,495		*	*	*	*	*	*	*	*	*	*	*	*	*	*	*	*	*	*	*	*	Branchville, R.D.
Wharton	95,106	*	*	*	*	*	*	*	*	*	*	*	*	*	*	*	*	*	*	*	*	*	Egg Harbor City, R.D. 2
Worthington	6,200																						Columbia
STATE PARKS																							
Allaire	1,278									*	*	*	*	*	*	*	*	*	*	*	*	*	P.O. Box 218, Farmingdale
Barneget	13		*	*						*	*	*	*	*	*	*	*	*	*	*	*	*	c/o Island Beach
Cheesequake	918		*	*					*	*	*	*	*	*	*	*	*	*	*	*	*	*	Matawan
Edison	30																*	*	*	*	*	*	Menlo Park
Fort Mott	104			*						*	*	*	*	*	*	*	*	*	*	*	*	*	Salem, R.D. 3
Hacklebarney	193									*	*	*	*	*	*	*	*	*	*	*	*	*	Long Valley, R.R.
High Point	11,061		*	*		*	*	*	*	*	*	*	*	*	*	*	*	*	*	*	*	*	Sussex
Hopatcong	107		*	*					*	*	*	*	*	*	*	*	*	*	*	*	*	*	Landing
Island Beach	2,694		*	*					*	*	*	*	*	*	*	*	*	*	*	*	*	*	Seaside Park
Musconetcong	343		*	*	*	*	*	*	*	*	*	*	*	*	*	*	*	*	*	*	*	*	c/o Hopatcong
Parvin	1,025		*	*	*	*	*	*	*	*	*	*	*	*	*	*	*	*	*	*	*	*	Elmer, R.D. 1
Ringwood Manor	579		*	*	*	*	*	*	*	*	*	*	*	*	*	*	*	*	*	*	*	*	Box 1303, R.D., Ringwood
Sandy Hook	460		*	*	*	*	*	*	*	*	*	*	*	*	*	*	*	*	*	*	*	*	Highlands
Stephens	231		*	*	*	*	*	*	*	*	*	*	*	*	*	*	*	*	*	*	*	*	Hackettstown
Swartswood	704		*	*	*	*	*	*	*	*	*	*	*	*	*	*	*	*	*	*	*	*	Box 229B, R.D. 2, Newton
Voorhees	429		*	*	*	*	*	*	*	*	*	*	*	*	*	*	*	*	*	*	*	*	Glen Gardner, R.D.
Wash. Crossing	369									*	*	*	*	*	*	*	*	*	*	*	*	*	Titusville, R.D.
Wash. Rock	27									*	*	*	*	*	*	*	*	*	*	*	*	*	Dunellen

No reservations for facilities are handled by the Trenton office. Reservations should be made through the Forest or Park Area Officer in charge. Rate lists and application forms may be obtained by writing to the mailing address listed above. 352.125, 10M-7-1-62



Delaware River at Wasbington Crossing

WASHINGTON CROSSING STATE PARK

"Prevent Forest Fires
and Help to
Preserve the Natural Beauty"

STATE OF NEW JERSEY
DEPARTMENT OF CONSERVATION AND
ECONOMIC DEVELOPMENT