



Fishing is a favorite sport on State Forests and Parks. Haddonbury, D-6. Shiplens, D-5.

Lake Absegami, a beautiful body of water, affords excellent bathing (cabins and camp shelters are available).

Belleplain Forest, M-5. This forest in the most southern portion of the State, in Cape May and Cumberland Counties, is 5,492 acres in area. The Lake Nummy development is the principal recreational area. Facilities provide for bathing, boating, picnicking, hunting and fishing (boats available).

Green Bank Forest, K-6. A tract of 1,833 acres along the Mullica River in Atlantic and Burlington Counties. Most of this forest is southern white cedar swamp, inaccessible for recreation. Along the Mullica River near the village of Green Bank, picnic tables and bathing facilities have been provided.

Jackson Forest, H-7. Cassville, Ocean County. This is a demonstration forest of 43 acres. There are no recreational facilities but hunting is permitted.

Jenny Jump Forest, D-5. Situated high up on Jenny Jump Mountain in Warren County, this 967-acre forest affords beautiful panoramas of the surrounding country and the famous Delaware Water Gap. Facilities provide for picnicking, camping, hiking and hunting. Camping shelters are available for those visitors who are not equipped for tent camping.

Lebanon Forest, I-6. The largest State Forest in New Jersey located in Burlington County, is 22,185 acres in area. Situated in the Pine Belt of southern New Jersey this forest is a favorite mecca of the hunter. Facilities provide for bathing, picnicking, hiking, hunting and camping. Cabins available on the shore of the Pajunk Pond.

Narvin Green Forest, C-7. Located in Passaic County this 2,200-acre forest, a recent gift, is undeveloped except for hiking trails.

Penn Forest, J-7. Located in the heart of the Pine Belt in Burlington County, this 2,558-acre forest affords wonderful panoramas of New Jersey's "wilderness." From Bear Swamp Hill nothing but forest greets the visitor's eye in every direction. Lake Oswego, developed from a cranberry bog reservoir in 90 acres in extent. Facilities for bathing, picnicking, hiking, hunting and fishing.

Stokes Forest, B-5. Located on the famous Kittatinny Ridge in Sussex County, this 12,429-acre forest is typical of the finest mountain country New Jersey has to offer. Facilities for bathing, picnicking, hiking, camping, fishing and hunting. Log cabins and trailer sites are available at Lake Quakittunk. Tillman's Ravine is a gorge of rare beauty, probably the finest in the State. Scenic views from Sunrise Mountain.

State Parks

The State Parks have been established to provide year around facilities for healthful outdoor recreation, to preserve the native flora and fauna in their natural conditions and to preserve areas of outstanding historic significance. Most of the parks have been set aside as wildlife sanctuaries and hunting is not permitted.

There are twenty State Parks administered by the Department with a total area of more than



Campsites on New Jersey Forests and Parks Provide Opportunities for Out-of-door Living. Stokes, B-5.

eighteen thousand acres. Four of these parks at this time have not been developed for public use.

Allaire Park, H-8. Located at Allaire, in Monmouth County. Includes the Deserted Village and site of Howell Iron Works. The park is open to the public but undeveloped for recreational use.

Cheesequake Park, F-8. This area of nearly 1,000 acres in Middlesex County affords forest-park conditions in a heavily industrialized area. Facilities provide for bathing, picnicking and hiking. The abundance and variety of the flora make this park of great interest to students of botany.

Cranberry Lake Park, C-6. Cranberry Lake (near Netcong) Sussex County. This park of 199 acres includes Cranberry Lake. Public access to this State-owned lake is provided but there are no recreational facilities available.

Edison Park, E-7. This park of 30 acres at Menlo Park, Middlesex County, offers the Edison Memorial Tower and Museum that are open to the public. Admission charge.

Fanny Park, C-7. Near Split Rock, Morris County. Undeveloped.

Fort Mott Park, K-2. This park of 103 acres at Pinn Point, in Salem County, provides an excellent view of the lower Delaware River. One of three forts guarding the river below Philadelphia, its fortifications are no longer used for defense purposes. Fort's Point National Cemetery is nearby. Scenic and historic interest, fishing and picnicking.

Hackberry Park, D-6. This 192-acre park in Morris County is situated in a gorge of unusual beauty on the west bank of the Black River. Facilities provide for picnicking and hiking. Fishing is permitted in the Black River and tributaries.

High Point Park, A-6. Located in extreme northwest corner of the State along the Kittatinny ridge in Sussex County, this park of 19,955 acres includes the highest point in New Jersey (1,803 feet above sea level). Facilities provide for bathing, boating, picnicking, hiking, fishing and camping (lodge with sleeping accommodations, restaurant, refreshment stands). Scenic views.

Hopatcong Park, C-6. Located at Hopatcong Dam, Sussex County, 197 acres in area. Facilities provide for picnicking, bathing and fishing. A public dock is owned by the State at Landing, Morris County.

ML Laurel Park, I-5. This 20-acre park is located near Morristown. Undeveloped.

Musconetcong Park, C-6. Located in Stanhope, Sussex County, 351 acres. The State owns Lake Musconetcong (315 acres) and 24 acres of approaches, giving public access to the lake. Facilities for bathing and fishing.

Parvin Park, L-4. Situated in Salem County (6 miles from Vineland and Bridgeton). One of the finest State Parks in New Jersey, this 1,000-acre tract affords all facilities of a woodland type of park. A great abundance of flora and a wide variety of bird life make the park of special interest to nature lovers. Facilities have been developed for bathing, boating, canoeing, hiking, picnicking, camping and fishing. Attractive cabins are available on Thur-



Cabins Serve as Convenient Headquarters for Winter Sports Enthusiasts. Soler Forest, B-5.

dergest Pond. Campsites are available on Parvin Lake. Boats and canoes may be rented. Parvin Lake of nearly 100 acres affords some of the finest fishing in southern New Jersey.

Princeton Battlefield Park, G-6. In 1947 funds were provided to acquire this famous battlefield of the Revolution. Thirty-nine acres have been acquired. No recreation facilities.

Ringwood Manor Park, B-8. This 579-acre park in Passaic County includes both an historic and recreational section. The old 78-room Ringwood Manor House, formerly the property of the celebrated Cooper and Hewitt families, is open as a museum. Picnic facilities have been developed on other parts of the park. Fishing in Ringwood River.

Saxon Falls, D-5. A guard lock of the former Morris Canal and nine acres of adjoining property have been developed to provide for picnicking and swimming. Fishing in Musconetcong River.

Stevens Park, D-5. This 287-acre park in Warren and Morris Counties includes more than a mile of Musconetcong River. Facilities have been developed for picnicking. Fishing, except for a short distance reserved by the donors of the property, may be enjoyed on Musconetcong River.

Swartwood Park, B-5. Most of this 704-acre State Park in Sussex County, is contained in Swartwood Lake, a beautiful body of water. The lake is well-known for excellent fishing. The picnic area at Ennemois Grove is among beautiful old hemlocks. Facilities include provision for bathing, boating, picnicking, and fishing. Boats may be rented.

Voorhees Park, E-5. Situated in the hills of Hunterdon County this 429-acre park offers a striking view of rural countryside. Facilities have been developed for picnicking on both the Hop-pock Grove and Hill Acres tracts.

Washington Crossing Park, G-5. This 375-acre park, 3 miles south of Trenton in Mercer County, was established to commemorate General Washington's famous crossing of the Delaware River on Christmas night 1776, prior to the Battle of Trenton. In addition to the formal park and the old McKonkey Ferry House, now maintained as a museum, picnic facilities have been developed. One of the State Forest Nurseries is located on the park.

Washington Rock Park, E-7. This 27-acre park is situated on a vantage point on the First Watchung Mountain, in Somerset County, near Dunellen. It was from this natural lookout that General Washington watched the movements of the British Troops during the Revolution. Picnicking facilities have been provided.

Palisades Interstate Park

This park is located in the States of New York and New Jersey and is operated by the Palisades Interstate Park Commission. With offices at Alpine, the New Jersey section contains 1,700 acres and extends 13 miles along the Hudson River from Fort Lee, in Bergen County, to the New York State line. Regarded as one of the scenic features of America, the lands were acquired to preserve the skyline of the Palisades of the Hudson. Facilities are provided for picnicking and hiking.

County Parks

The counties of Camden, Essex, Middlesex, Passaic and Union have developed county park systems. For information about facilities address as follows:

Camden County Park Commission, Court House, Camden, N. J.

Essex County Park Commission, Sixth and Clifton Aves., Newark, N. J.

Middlesex County Park Commission, New Brunswick, N. J.

Passaic County Park Commission, Paterson, N. J.

Union County Park Commission, Warrinanco Park, Elizabeth, N. J.



Boating and Bathing Are Favorite Summer Pastimes on New Jersey Forests and Parks. Swartwood Park, B-5.

All museums at Historic Sites are open daily, except Mondays from 10:15 and 1:15, Sundays 2:45 as well as all holidays except Thanksgiving, Christmas Day and New Year's Day. An admission charge of twenty-five cents for adults is made where indicated. No charge is made for children under twelve years of age except at the Trenton Battle Monument where a fee of five cents is required and ten cents for adults. Educational groups accompanied by a teacher or leader are admitted free.

Appointment for school classes or groups should be made with the local caretaker by letter or telephone.

Boudinot House, E-8. Located at 1073 East Jersey Street, Elizabeth, Union County, N. J. Also known as "Boxwood Hall" it was erected about 1750 by Samuel Woodruff, Mayor of Elizabeth, and later became the home of Elias Boudinot, first President of the United States Continental Congress and signer of the peace with Great Britain. Contains a few furnishings.

Carranza Memorial, J-6. Located in the "Pines" near Tabernash between Atison and Chatsworth, Burlington County. This memorial was erected in honor of Captain Emilio Carranza, Mexican patriot who fought at this spot on July 13, 1928, on his attempted non-stop return flight from New York City to Mexico City.

Grover Cleveland Birthplace, D-8. Located at 207 Bloomfield Avenue, Caldwell, Essex County. The 22nd President of the United States was born in this house in 1857 when it was a church annex. He lived here for four years while his father was a Presbyterian minister in Caldwell. Contains furnishings and mementos of Grover Cleveland and the period in which he lived. Admission charge.

Hancock House, L-3. Located at Hancock's Bridge near Salem, Salem County. Built in 1734, blue glazed header bricks were laid in pattern and in forming the date and initials of the builder. Here on March 21, 1778, a party of Patriots were massacred by the British under Major Simcoe. The house contains an extensive collection of antiques, curioses, etc. Adjacent is a cedar plank house built by the Swedes over two hundred years ago. Admission charge.

Indian King Tavern, I-4. Located at 233 East Kings Highway, Haddonfield, Camden County. Built in 1750, the State Legislature held frequent meetings in this tavern. Within its walls the Council of Safety for New Jersey organized on March 15, 1777; the bill was passed substituting the word "State" for "Colony" in all State papers, and the Great Seal of New Jersey was received and adopted.

Lawrence House, H-5. Located at 459 High Street in Burlington, Burlington County, it was the Birthplace of Captain James Lawrence, the celebrated naval hero, who, fatally wounded in a sea battle during the War of 1812 spoke the immortal words "Don't Give Up the Ship."

Monmouth Battle Monument, G-8. Located in the Freehold Driving Park near the Court House, Freehold, Monmouth County, the monument was erected to commemorate the battle fought here on June 28, 1778, between the British Army under General Clinton and the Continental Army commanded by General Washington. Molly Pitcher gained lasting fame in this battle by replacing her slain husband in firing one of the cannons.



Vacations in Cabins are Available at a Number of State Parks and Forests.

Old Dutch Parsonage, E-4. Nearly opposite the Wallace House on Washington Place in Somerville, stands the Old Dutch Parsonage, built in 1761 by the Congregation of the First Reformed Dutch Church, of brick brought from Holland. This building saw within its walls the nucleus of the establishment of Rutgers University and the New Brunswick Theological Seminary. Contains interesting furnishings and curios. Admission charge.

Oxford Furnace, D-5. Located at Oxford in Warren County this charcoal blast furnace was built in 1741-2 by Jonathan Robeson and was blown out in 1884. It supplied cannon balls to American troops during the French and Indian, Revolutionary and Civil Wars and later became famous for the production of cut nails. It was the first furnace in America to make use of the hot blast and is the only colonial charcoal furnace still standing. The furnace is in ruins and has not been restored.

Princeton Battle Monument, G-4. Located at Bayard Lane and Nassau Street in Princeton, Mercer County, it was erected in 1922 to commemorate the Battle of Princeton on January 3, 1777, between Continental troops under General Washington and the British under Lord Cornwallis. The monument was designed by Frederick Monmonies.

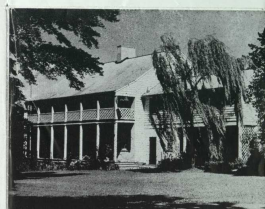
Rockingham, F-6. Located at Rocky Hill in Somerset County, it is also known as Washington's Headquarters at Rocky Hill and the Berrien House. It was used by Washington as headquarters from August 25 to November 10, 1783, while Continental Congress was in session at Princeton. Here Washington wrote and delivered his "Farewell Address to the Armies." It contains a large collection of furnishings. Admission charge.

Somers Mansion, M-6. Located on the Mays Landing Road at Somers Point, Atlantic County. It was built in 1720-30 by Richard Somers I, the son of John Somers, who established a ferry from Joly's Point to Beasley's Point in 1693. Lt. Commander Richard Somers, III, who distinguished himself in the early history of the United States Navy in the Battle of Tripoli in 1804, was born in this house on September 15, 1778. Now headquarters for the Atlantic County Historical Society, it is furnished with antiques and relics. Admission charge.

Trenton Battle Monument, G-6. Built in 1893 at the intersection of North Broad Street and Pennington Avenue, it marks the site of the main gun emplacement at the Battle of Trenton in the celebrated surprise attack on December 26, 1776. A small museum is housed in the base of the monument. An observation platform 125 feet above street level can be reached by elevator. Admission charge.

Veterans All Ways Memorial, I-8. Located off N. J. State Highway Route 37 near Labadie, Ocean County, this memorial of reinforced square concrete columns in a semi-circular arrangement was erected in commemoration of the Grand Army of the Republic.

Van Stueben House, C-9. Located on New Bridge Road, North Hackensack, Bergen County. Erected in 1752 it was owned by Isaac Zabinian and a Loyalist during the Revolutionary War. Occupied at intervals by both British and American troops.



One of a Number of State-owned Historic Sites, "Rockingham," Washington's Headquarters at Rocky Hill, F-6.

it was purchased after the War by New Jersey and given to General Von Steuben for his services. Now headquarters for the Bergen County Historical Society, it is furnished with relics and antiques. Admission charge.

Wallace House, E-6. Located at Washington Place, Somerville, in Somerset County, it was erected in 1778 by William Wallace and Washington occupied it during the winter of 1778-79 while the army was stationed at Camp Middlebrook, now Somerville. It contains a valuable collection of Revolutionary relics, old Colonial furniture and glass. Admission charge.

Walt Whitman House, I-4. Located at 330 Middle Street, Camden, N. J. Walt Whitman, the celebrated poet lived in this house from 1884 until his death on March 26, 1892. It is maintained as a State Historic shrine and contains original furnishings and many Whitman mementos. Admission charge.