

AG. COLLEGE FARM
NEW BRUNSWICK N. J.

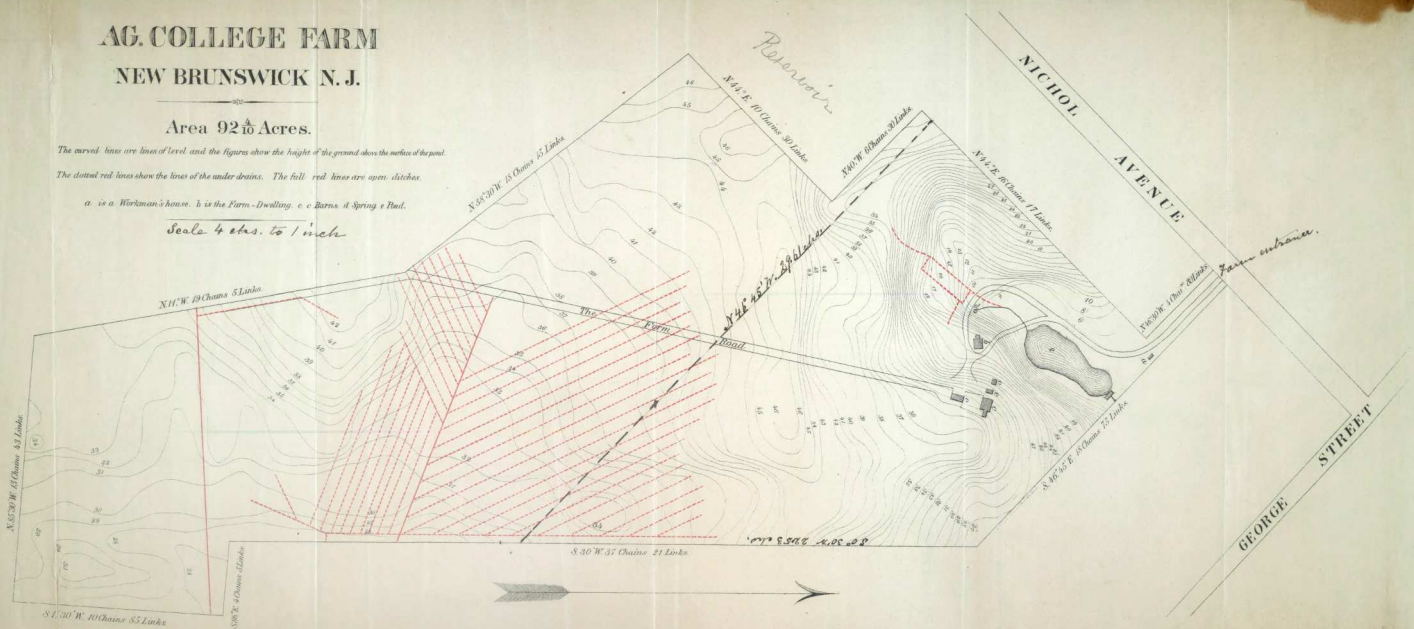
Area 92 $\frac{1}{2}$ Acres.

The curved lines are lines of level, and the figures show the height of the ground above the surface of the pond.

The dotted red lines show the lines of the under drains. The full red lines are open ditches.

a is a Workman's house, b is the Farm-Dwelling, c is Barns, d Spring & Pond.

Scale 4 chs. to 1 inch



MP/3813/MSD/213/0000AN
 N.B. Ag. College Farm, [N.J.]