

Fishing

Swartswood Lake offers excellent opportunities to the fisherman. Bass, pike, perch, catfish and sunfish are the main species, and may be taken subject only to New Jersey fishing laws.

Help Us Maintain a Clean and Attractive Park

Litter along drives and in recreation areas detracts from the beauty of the park and requires costly clean-up services. The money involved will be better directed toward improvements and additional facilities.

Please use the trash containers provided.

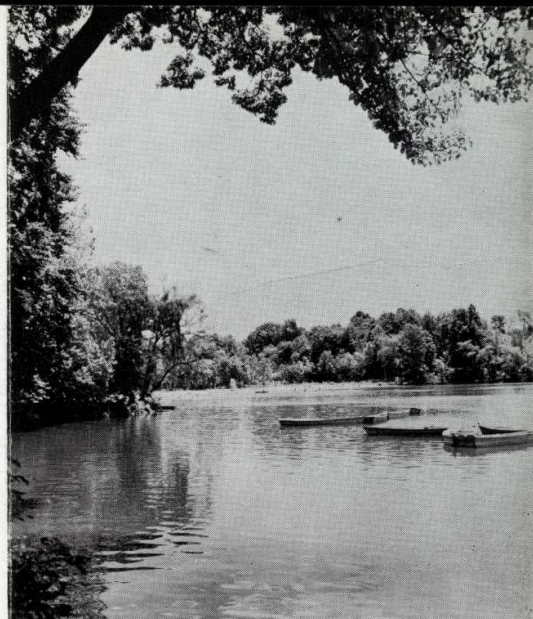
To keep the park perpetually attractive, do not pick or remove flowers and shrubs, or damage any tree or park property.

Administration

Visitors are admitted to the park upon payment of a nominal fee at the entrance gate.

Special arrangements for other uses and detailed information may be obtained either in person at the park office, or by addressing a letter to the Superintendent, Swartswood State Park, Newton, R. D. 2, N. J. Arrangements also may be made by telephoning the park office.

The park is open during daylight hours throughout the year.



Emmons Cove on Swartswood Lake

FACILITIES AVAILABLE AT NEW JERSEY STATE FORESTS AND PARKS

STATE FORESTS	Acreage	Archery	Bathhouse	Bathing	Boating Permitted	Boat Rental	Cabins	Camp Leasable	Camp Sites	Camp (Group)	Children's Playground	Fishing	Hiking	Horseback Riding	Horseback Trails	Hunting	Lodge Rental	Lodge (Rooms)	Museum	Naturalist Service	Observation Tower or Overlook	Picnicking	Refreshments	Restaurant	Mailing Address
Bass River	8,418		*	*	*	*	*	*	*	*	*	*	*	*	*	*	*	*	*	*	*	*	*	*	New Gretna
Belleplain	6,492		*	*	*	*	*	*	*	*	*	*	*	*	*	*	*	*	*	*	*	*	*	*	Woodbine, R.D. 2
Green Bank	1,833		*	*	*	*	*	*	*	*	*	*	*	*	*	*	*	*	*	*	*	*	*	*	Egg Harbor City, R.D. 2
Abram S. Hewitt	1,890											*	*	*	*	*	*	*	*	*	*	*	*	*	c/o Ringwood Manor
Jackson	43											*	*	*	*	*	*	*	*	*	*	*	*	*	c/o Allaire
Jenny Jump	950						*	*	*	*	*	*	*	*	*	*	*	*	*	*	*	*	*	*	Hope
Lebanon	22,216	*	*	*	*	*	*	*	*	*	*	*	*	*	*	*	*	*	*	*	*	*	*	*	New Lisbon
Norvin Green	2,260						*	*	*	*	*	*	*	*	*	*	*	*	*	*	*	*	*	*	c/o Ringwood Manor
Penn	3,318	*	*	*	*	*	*	*	*	*	*	*	*	*	*	*	*	*	*	*	*	*	*	*	c/o Bass River
Stokes	12,495	*	*	*	*	*	*	*	*	*	*	*	*	*	*	*	*	*	*	*	*	*	*	*	Branchville, R.D.
Wharton	95,106	*	*	*	*	*	*	*	*	*	*	*	*	*	*	*	*	*	*	*	*	*	*	*	Egg Harbor City, R.D. 2
Worthington	6,200				*	*	*	*	*	*	*	*	*	*	*	*	*	*	*	*	*	*	*	*	Columbia
STATE PARKS																									
Allaire	1,278								*	*	*	*	*	*	*	*	*	*	*	*	*	*	*	*	P.O. Box 218, Farmingdale
Barnegat	13	*	*	*	*	*	*	*	*	*	*	*	*	*	*	*	*	*	*	*	*	*	*	*	c/o Island Beach
Cheesequake	918	*	*	*	*	*	*	*	*	*	*	*	*	*	*	*	*	*	*	*	*	*	*	*	Matawan
Edison	30																	*	*	*	*	*	*	Menlo Park	
Fort Mott	104			*	*	*	*	*	*	*	*	*	*	*	*	*	*	*	*	*	*	*	*	*	Salem, R.D. 3
Hacklebarney	193								*	*	*	*	*	*	*	*	*	*	*	*	*	*	*	*	Long Valley, R.R.
High Point	11,061	*	*	*	*	*	*	*	*	*	*	*	*	*	*	*	*	*	*	*	*	*	*	*	Sussex
Hopatcong	107	*	*	*	*	*	*	*	*	*	*	*	*	*	*	*	*	*	*	*	*	*	*	*	Landing
Island Beach	2,694	*	*	*	*	*	*	*	*	*	*	*	*	*	*	*	*	*	*	*	*	*	*	*	Seaside Park
Musconetcong	343	*	*	*	*	*	*	*	*	*	*	*	*	*	*	*	*	*	*	*	*	*	*	*	c/o Hopatcong
Parvin	1,025	*	*	*	*	*	*	*	*	*	*	*	*	*	*	*	*	*	*	*	*	*	*	*	Elmer, R.D. 1
Ringwood Manor	579	*	*	*	*	*	*	*	*	*	*	*	*	*	*	*	*	*	*	*	*	*	*	*	Box 1303, R.D., Ringwood
Sandy Hook	460	*	*	*	*	*	*	*	*	*	*	*	*	*	*	*	*	*	*	*	*	*	*	*	Highlands
Stephens	231	*	*	*	*	*	*	*	*	*	*	*	*	*	*	*	*	*	*	*	*	*	*	*	Hackettstown
Swartswood	704	*	*	*	*	*	*	*	*	*	*	*	*	*	*	*	*	*	*	*	*	*	*	*	Box 229B, R.D. 2, Newton
Voorhees	429	*	*	*	*	*	*	*	*	*	*	*	*	*	*	*	*	*	*	*	*	*	*	*	Glen Gardner, R.D.
Wash. Crossing	369	*	*	*	*	*	*	*	*	*	*	*	*	*	*	*	*	*	*	*	*	*	*	*	Titusville, R.D.
Wash. Rock	27	*	*	*	*	*	*	*	*	*	*	*	*	*	*	*	*	*	*	*	*	*	*	*	Dunellen

No reservations for facilities are handled by the Trenton office. Reservations should be made through the Forest or Park Area Officer in charge. Rate lists and application forms may be obtained by writing to the mailing address listed above.

SWARTSWOOD STATE PARK

"Prevent Forest Fires and Help to Preserve the Natural Beauty"

STATE OF NEW JERSEY
DEPARTMENT OF CONSERVATION AND ECONOMIC DEVELOPMENT