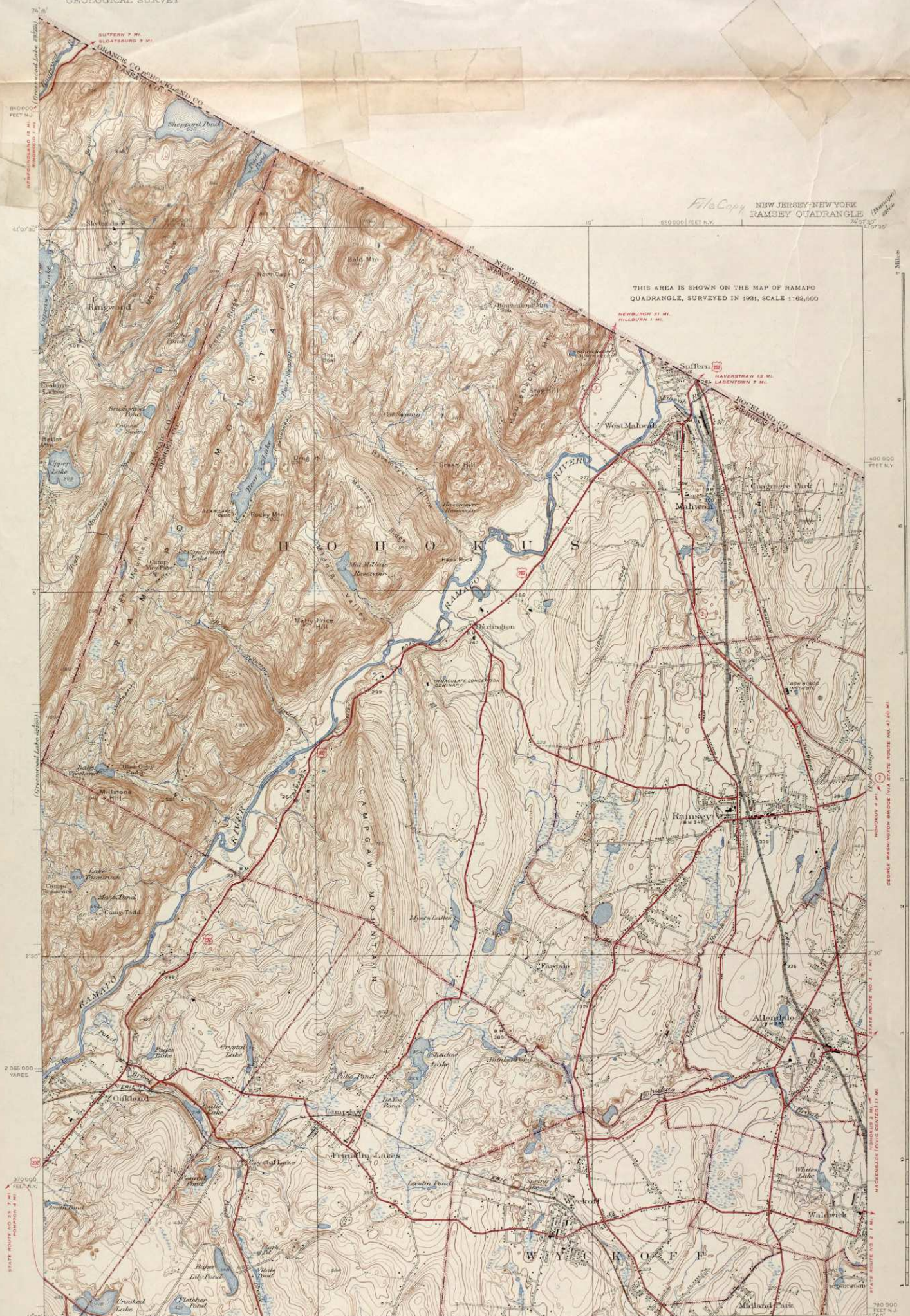


File Copy NEW JERSEY-NEW YORK
RAMSEY QUADRANGLE

THIS AREA IS SHOWN ON THE MAP OF RAMAPO
QUADRANGLE, SURVEYED IN 1931, SCALE 1:62,500



Topography by J. H. Lynch, E. C. Garthe, and E. Van Brunt
Surveyed in 1935-1936
FRANKLIN LAKES (2 W.)
PATERSON (CITY HALL) (2 W.)
HALEDON (2 W.)
PATERSON (CITY HALL) (2 W.)
MIDLAND PARK (1 W.)
TO STATE ROUTE NO. 2 (1/2 W.)
Polyconic projection, 1927 North American datum
5000 yard grid based on U.S. zone system. A
10000 foot grid based on New Jersey and
New York (East) rectangular coordinate systems
PATERSON (CITY HALL) (2 W.)
Scale 1:62,500
1 Mile
1 Kilometer
Contours interval 10 feet
Datum is mean sea level
ROUTES USUALLY TRAVELED
OTHER SURFACE IMPROVEMENTS
1 U. S. ROUTE
1 STATE ROUTE
RAMSEY, N.J.-N.Y.
Edition of 1940
N4-CO-W3-075/75

9 3810 .015/1932/21/119.213/1940