

FORM NO. 270. 11-2-05.

**EDISON FILM****DOWN ON THE FARM**TRADE MARK  
*Thomas A Edison*

COPYRIGHTED OCTOBER, 1905.

**NOTICE**

These films are sold subject to the restriction that they shall not be used for duplicating or printing other films from them. Any use of them for such purposes is an infringement of the patents under which they are made and sold. Patented August 31, 1897. Reissued September 30, 1902, and January 12, 1904. All infringements of Edison copyrighted films will be prosecuted at once and stopped by injunction.

**EDISON MANUFACTURING COMPANY**

Main Office and Factory: LARSEN, NEW JERSEY  
 111 Broadway, New York  
 New York Office: 111 Broadway, New York  
 Chicago Office: 111 Broadway, New York  
 Philadelphia Office: 111 Broadway, New York  
 St. Louis Office: 111 Broadway, New York  
 San Francisco Office: 111 Broadway, New York  
 London Office: 111 Broadway, New York  
 Paris Office: 111 Broadway, New York  
 Berlin Office: 111 Broadway, New York  
 Rome Office: 111 Broadway, New York  
 Madrid Office: 111 Broadway, New York  
 Havana Office: 111 Broadway, New York  
 Mexico Office: 111 Broadway, New York  
 Manila Office: 111 Broadway, New York  
 Cebu Office: 111 Broadway, New York  
 Singapore Office: 111 Broadway, New York  
 Hong Kong Office: 111 Broadway, New York  
 Yokohama Office: 111 Broadway, New York  
 Kobe Office: 111 Broadway, New York  
 Osaka Office: 111 Broadway, New York  
 Tokyo Office: 111 Broadway, New York

## DOWN ON THE FARM.

No. 6214. Code Vaterarm. Length 440 ft. A \$66.00

The opening picture shows a number of boarding school girls raiding an orchard. Some are gathering the apples in their skirts, while others are climbing up the trees and shaking and knocking down the fruit.

They are suddenly startled by shouts, and looking around, find that they have been discovered by the farmers, who have started on a run after the raiders. The girls in the tree scramble down, and all take to their heels, with the men in close pursuit.

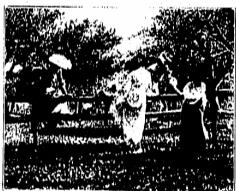
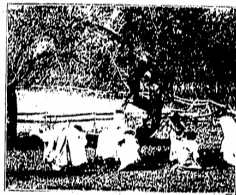
The chase is now on in earnest. Before going far the girls are obliged to climb a fence, which they accomplish in fairly good form. While running down a steep bank, one of the farmers stumbles and falls and quits the race.

The next obstacle is a very high gate, at the edge of some woods, which the girls clamber over with difficulty on account of their skirts. Another farmer is now disabled and gives up the chase.

The young ladies, though rather tired, quicken their pace along a country road and succeed in riding themselves of another of their pursuers, who drops by the roadside.

They next enter a field and climb up on a hay stack. By a photo-rapin description the girls appear to climb to the top of the stack without a hitch. When the hay farmer approaches, they in haste cut the pile into two parts. He finally catches a letter from the tree he reaches. The top of the stack is as high as the farmer's head, and he is obliged to look up at the girls and the hay.

The girls then descend the stack and enter a barn. They find a horse and a cow. The horse is a white one and the cow is a black one. The girls are very much amused by the horse and the cow. They then enter a field and climb up on a hay stack. By a photo-rapin description the girls appear to climb to the top of the stack without a hitch. When the hay farmer approaches, they in haste cut the pile into two parts. He finally catches a letter from the tree he reaches. The top of the stack is as high as the farmer's head, and he is obliged to look up at the girls and the hay.



## LATEST FEATURE SUBJECTS.

CLASS A.

6211	The Watermelon Patch.....	725 ft.
6191	The Miller's Daughter.....	975 ft.
6190	Poor Algy.....	315 ft.
6187	The "White Caps".....	835 ft.
6185	Starting on a Coyote Hunt.....	185 ft.
6184	Lucille Mulhall and Trick Horse.....	155 ft.
6183	Great Buffalo Chase.....	135 ft.
6181	The Little Train Robbery.....	725 ft.
6168	Scenes and Incidents Russo-Japanese Peace Conference.....	800 ft.
6167	Western "Bad Man" Shooting Up a Saloon.....	215 ft.
6166	Lucille Mulhall Roping and Tying a Steer.....	50 ft.
6162	The Boarding School Girls.....	965 ft.
6157	June's Birthday Party.....	700 ft.
6156	Stolen by Gypsies.....	845 ft.
6147	Raffles The Dog.....	635 ft.
6140	Drills and Exercises School Ship St. Mary's.....	605 ft.
6139	The Whole Damm Family and the Damm Dog.....	300 ft.
6136	On A Good Old 5c. Trolley Ride.....	545 ft.
6133	The Burglar's Slide for Life.....	265 ft.
6127	How Jones Lost His Roll.....	575 ft.
6120	Seven Ages.....	415 ft.
6116	The Kleptomaniac.....	670 ft.
6098	The Ex-Convict.....	660 ft.

## LATEST HUMOROUS SUBJECTS.

CLASS A.

6210	Girls and "Barrel of Love".....	75 ft.
6209	Girls on the "Bumpety Bumps".....	40 ft.
6208	Girls and Moving Stairway.....	65 ft.
6204	Burglar and Bull Dog.....	55 ft.
6203	Burglar and Vapor Bath.....	105 ft.
6202	Always a Gentleman.....	80 ft.
6199	Old Maid and Pet Cat.....	35 ft.
6198	Old Sweethearts.....	60 ft.
6195	Chewing Gum.....	25 ft.
6194	Cry Baby.....	30 ft.
6193	Cigarette Fiend.....	30 ft.
6192	Sneezing.....	25 ft.

**EDISON PROJECTING KINETOSCOPE.  
EXHIBITION MODEL.**

**Price \$115.00.**

Catalogue No. K 15000. Code *Unfarde*.

Net weight, complete, 70 lbs.; without Rheostat, 55 lbs.; gross weight, 150 lbs. Dimensions when set up ready for operation: Length, 3 feet 9 inches; width, 11 inches; height, 16 inches. Dimensions of packing case: 55 x 14 x 22 inches.

**Equipment.**

Hand Power Mechanism in Quartered Oak Cabinet.	Revolving Holder Post for Calcium Burners
Reel Hanger with Re-winding Crank, Gear and Reel Shaft with Pinion	Russia Iron Cone and Slide Carrier Frame
Take-up Device.	Double Slide Carrier.
Two inch Reels.	Extra Quality Condensing Lens.
Large Base Board, with Clamp Casting complete.	No. 2 Objective Lens for motion pictures.
Lamp House complete, with Lamp House Brackets.	Stereopticon Attachment, including No. 2 A Objective Lens.
Arc Lamp and Base.	Knife Switch for Electric Current and connection from Lamp to Rheostat.
	Adjustable Rheostat for 32 or 104 volts alternating current or 110-120 volts direct current.

**Exhibition Model without Take-up Device.**

**Price \$105.00.**

Catalogue No. K 15001. Code *Unfarrowed*.

**Exhibition Model without Stereopticon Attachment.**

**Price \$105.00.**

Catalogue No. K 15002. Code *Unfassbar*.

**Exhibition Model without Take-up Device and Stereopticon Attachment.**

**Price \$90.00.**

Catalogue No. K 15003. Code *Unfasslich*.

**EDISON PROJECTING KINETOSCOPE.  
UNIVERSAL MODEL.**

**Price \$75.00.**

Catalogue No. K 14500. Code *Usaba*.

Net weight, complete, 56 lbs.; without Rheostat, 41 lbs.; gross weight, 110 lbs. Dimensions when set up ready for operation: Length, 2 feet 5 inches; width, 11 inches; height, 14 inches. Dimensions of packing case: 30 x 15 x 22 inches.

**Equipment.**

Hand Power Mechanism with Base Casting and Sliding Device.	Double Slide Carrier.
Take-up Device and Reel Hanger	Extra Quality Condensing Lens.
Two inch Reels	No. 1 Objective Lens.
Two Spring Steel Bolts for Driving Reels	Stereopticon Attachment, including extra fitting for holding half size objective, adapted for holding quarter size objective and No. 1 A Objective Lens.
Large Base Board with Clamp Casting complete.	Knife Switch for Electric Current and connection from Lamp to Rheostat.
Lamp House complete.	Adjustable Rheostat for 32 or 104 volts alternating current or 110-120 volts direct current.
Arc Lamp and Base.	
Revolving Holder Post for Calcium Burners	
Russia Iron Cone and Slide Carrier Frame	

**Universal Model Motion Picture Mechanism.**

**Price \$50.00.**

Catalogue No. K 14500. Code *Usable*.

**Equipment.**

Hand Power Mechanism with Base Casting and Sliding Device.	No. 1 Objective Lens.
Take-up Device and Reel Hanger	Stereopticon Attachment, including extra fitting for holding half size objective, and adapted for quarter size objective, but without Objective Lens.
Two Spring Steel Bolts for Driving Reels	