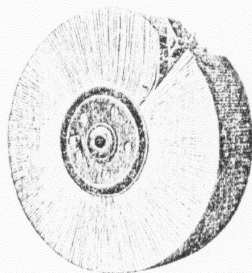


THE MUTOSCOPE REEL RENTAL SERVICE



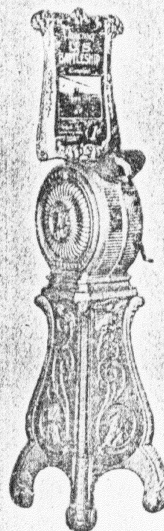
The above cut shows a reel consisting of about 800 pictures, as used in the Mutoscope. To withstand the wear these reels are subjected to, and give best results, it is necessary for them to be returned occasionally to our factory for repair and re-shaping. We do not sell reels, but put them out on a rental system at the nominal fee of three cents a day per reel from date of shipment by us to date of return, and transportation charges. To insure their careful handling and return, we have arranged with the National Surety Co. to furnish a special bond at a cost to the customer of \$5.00 a year for 20 reels or less, \$7.00 for 30 and \$10.00 for 40 inclusive.

In ordering reels, it is well to select a larger number than required, enabling us to provide for absent reels, as occasionally all reels of the subject desired may be out in service. Since the establishment of our reel rental bureau, the arcade business has grown to enormous proportions, and the Mutoscope, with their frequent change of new and catchy pictures, are the backbone of the business. We have the largest and most completely appointed studio in the world. Our production of pictures is continuous and strictly up-to-date. All sensational news events are covered by our photographers. In this country and abroad, and to these are added a vast store of comedy and piquant subjects, making the Mutoscope famous the world over.

172225

172225
71

Designed 1905 by Max Langberg
DIRECTIONS FOR OPERATING AND LIST OF PARTS
TYPE E. MUTOSCOPE



AMERICAN MUTOSCOPE & BIOGRAPH CO
11 EAST 14TH ST NEW YORK

TO UNPACK AUTOSCOPES

Stand case on end, with track "THIS END UP" at top, facing. Draw nuts free and remove cover also front and side trays and upright cleats, take hold of machine by feet, tip forward, thereby clearing it, and draw out of case.

TO CONNECT WITH DIRECT ELECTRIC SERVICE

Through a feet of circular loop, or other standard insulation, run No. 18 reinforced black twin cable of sufficient length to reach from lamp in machine to outer service, pass loop with cable through hole in back panel of machine, up through opening in plate and back of main frame to lamp socket (611), using care not to have exposed wire come in contact with mechanism. Prepare ends of cable and attach one end to terminal of lamp socket and other to terminal of switch blade (607), other ends to service plus.

These machines are thoroughly insulated and can be installed multiple on any service to low 250 volts.

OILING MOVEMENT

Keep the mechanism clean, and where required, sufficiently lubricated. Vaseline will be found suitable for gears and a light oil for bearings. Care must be taken not to have a surplus run off and smatter picture reel.

GENERAL DIRECTIONS

The vital parts of the mechanism are worm shaft or positive drive (636), worm gear (628), which carries reel, and friction attachment (635-637).

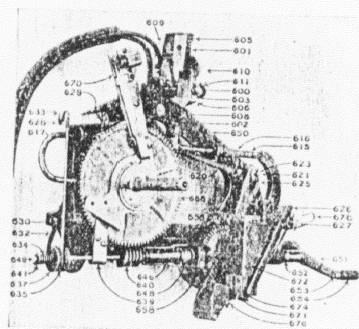
Owing to wear, the positive drive (636), or worm gear (628), will occasionally fail to turn reel smoothly, and snap back or "kick" off when operated. To remedy this replace with new the worn parts. When necessary to remove worm shaft or positive drive (636) take out retaining screw (658), after which the positive drive can be drawn out. Be careful in doing this not to lose the fibre thread washer which goes again at end of worm casting (640).

The friction attachment, that is, spool (635) and discs (637) with spiral spring (634), washer (641) and cotter pin (638) at rear end of worm shaft must be kept in good condition. The two discs (637), one on each side of the friction spool key fits groove in worm shaft, and after service is liable to wear down leaving hole round, allowing disc to turn on into mesh with gear when machine is operated after in-examine friction spool (635) and see that surface of same is not worn down, allowing friction disc (637) to bear against spool near centre.

If sides of friction spool (635) are worn at outer edge a new spool should be inserted. When re-assembling, use a little lubricant between the discs and spool, otherwise excessive friction is apt to cause machine to repeat.

In case coin hook (604) becomes bent and causes breakage of coin lever (603), the parts may be replaced by detaching spring (602) and expanding lifting clasp (603), next remove coin gauge plate (621) and drive out cross pin in bevel pinion (623). This will allow crank shaft to be removed, and afterwards coin lever.

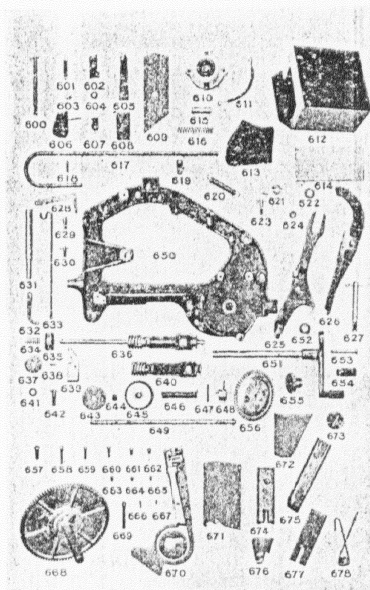
Release rod (617) should be adjusted, that when operated with a coin it will move far enough to bring end on top of



ASSEMBLED MECHANISM

second step of cam on worm gear. Long use may wear and prevent it from thus moving, resulting in coin setting machine so that reel travels only part way and "kicks" off. In this case, remove worm gear (628) and file end of rod sufficient to allow its proper movement.

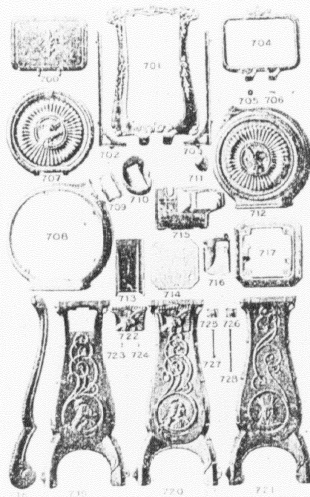
In replacing parts do not let an clamp (613) or cotter pin in post (600) holding hook trip (604) project below trip, or they will cut and destroy picture reel. No part except trip should come in contact with pictures. The picture reels are expensive and great care should be taken to prevent soiling, handling with oily hands or unnecessary splattering of oil from mechanism will greatly injure them.



PARTS OF MECHANISM

PARTS OF MECHANISM
ORDER SUPPLIES BY NUMBER OPPOSITE EACH PART,
REMITTING CASH WITH ORDER

NO.	PART	PRICE
600	Hook Trip Post	\$.34
601	Spring	.04
602	Switch Blade	.04
603	Copper Washer for elec. con. at Switch Blade	.04 1/2
604	Fibre Washer to insulate Hook Trip at side	.04 1/2
605	Hook Trip Spring Support	.02 1/2
606	Spring	.04
607	Trip Stop Block (fibre)	.04
608	Fibre Block for Switch Blade	.10
609	Socket Support for 110 volt Lamp	.40 1/2
610	for 110 volt Lamp	.12 1/2
611	Wire Connection between Lamp and Switch	.04 1/2
612	Light Shield	.25
613	Guard	.05
614	Lens	.42
615	Tilting Chute Return Sleeve	.06 1/2
616	Spring	.04
617	Release Rod	.15
618	" Pin	.04 1/2
619	" Spring Arm	.06 1/2
620	"	.02 1/2
621	Coin Lever Washer	.01 1/2
622	Iron Washer for Tilting Chute	.01 1/2
623	Coin Lever Roller Stud	.04
624	"	.12 1/2
625	Tilting Chute	.18 1/2
626	Stud	.06 1/2
627	Releasing Bell Crank	.05
628	Stud for Releasing Bell Crank	.04
629	" Worm Shaft Locking Link	.04
630	" Gear	.12 1/2
631	Worm Shaft Locking Link	.06 1/2
632	Releasing Link	.08 1/2
633	Friction Coil Spring	.02 1/2
634	Spool	.05
635	Positive Drive complete	1.00
636	Friction Disc	.02 1/2
637	Spool Pin	.10
638	Worm Shaft Guide	.01
639	including Worm Casting	.07
640	Friction Spring Washer	.01 1/2
641	Stud for Felt Oiling Gear	.04
642	Oiling Gear Disc	.02 1/2
643	Collet	.21
644	Felt Oiling Gear	.04 1/2
645	Worm Casting Torsion Spring	.19 1/2
646	Retaining Pin	.15
647	Torsion Spring Collar and Pin	.40
648	Worm Shaft and End Pin	.15
649	Main Frame	4.00
650	Crank Shaft and Crank complete	.62
651	Sleeve on Crank Shaft	.05
652	Stud for Crank Handle	.02 1/2
653	Roller Pin for Crank Handle	.11 1/2
654	Bevel Pinion	.12 1/2
655	Large Bevel Gear	.12 1/2



PARTS OF CABINET

697	Screw to hold Main Frame.....each	.01
698	" " " Positive Drive.....	.03
699	" " " Switch Blade Block.....	.01
700	" " " Gang Socket.....	.04
701	" " " Trip Spring Support.....	.04
702	" " " Worm Shaft Guide, Register and Gauge Plate.....	.05
703	" " " Coin Inlet Rosette.....	.04
704	" " " Lower coin Gauge Plate.....	.08
705	" " " Switch Blade, Elec. Con. and Gauge Plate Guard.....	.01
706	" " " Lens Retaining Plate.....	.01
707	" " " Coin Hook.....	.01
708	Worm Gear.....	.50
709	Large Cotter Pin.....	.005
710	Coin Register (complete) without Gear.....	1.25
711	Coin Gauge Plate.....	.16
712	" " " Guard.....	.075
713	Inlet Plate with Lip.....	.10
714	Brass Coin Gauge Plate Block.....	.20
715	Coin Chute.....	1.25
716	Hook.....	.025
717	Tilting Chute Spring.....	.065
718	Coin Chute Retaining Spring.....	.065

PARTS OF CABINET

709	Small Display Frame Back.....	.31
710	Large " " Front.....	1.00
711	" " " Back, left side.....	.22
712	" " " " right side.....	.22
713	Small " " Front.....	.23
714	Leather Washer for Display Frame.....	.01
715	Round Head Screw for Display Frame.....	.87
716	Door.....	2.12
717	Left Half of Head.....	.49
718	Left Retaining Plate.....	.36
719	Hood.....	.31
720	Coin Inlet Rosette—complete.....	1.35
721	Right Half of Head.....	.28
722	Cash Drawer.....	.495
723	Bottom Plate under Cash Drawer.....	.17
724	" " " for Head.....	.26
725	Coin Chute below Bottom Plate.....	.73
726	Plate Between Head and Pedestal.....	.94
727	Pedestal Front Panel.....	1.05
728	" " " Side.....	1.25
729	Cash Drawer Front.....	.01
730	Bolt to fasten Pedestal Panels together.....	.01
731	Cash Drawer Front, also to hold Coin Chute to Head Bottom Plate.....	.01
732	Cash Drawer Lock.....	.30
733	Cabinet Door Lock.....	.01
734	Bolt to hold Head to Pedestal.....	.015
735	Bolt for uniting Head.....	.015
736	Display Glass—Small Frame.....	.09
737	" " " Mat.....	.03
738	Aluminum Paint, per gallon.....	2.50

When shipped by mail, cost of postage will be added.
NOTE—Above Prices subject to Market Changes.

I- SELIG POLYSCOPE COMPANY

July Supplement of New Films, July 1902, 8 pp	PWbH
Special Supplement of Colorado Films, November 1902, 24 pp	PWbH
February Supplement of New Films, 2 February 1903, 16 pp	PWbH
1903 Complete Catalogue of Films and Moving Picture Machines, 52 pp	PWbH
Films of the Passion Play, n.d., 8 pp	CLAc, CLCM, DGU
Naval Battle Between the Russian and Japanese [1904], 4 pp	CLAc
Tracked by Bloodhounds, [1904], 2 pp	CLCM
The Serenade, [ca. 1904], 2 pp	CLCM
The Hold-up of the Leadville Stage, [October 1904] 8 pp	CLCM
The New Bullfight, [December 1904], 2 pp	CLAc
Supplement No. 15, Special Series of the Columbia River [1905], 6 pp	CLAc
No. 17, Tracked by Bloodhounds, 8 pp	CLAc
Samoa and the Fiji Island, [1905], 8 pp	CLAc
Special Roosevelt Circular, [March 1905], 2 pp	CLAc
The Gay Deceiver, [ca. 1906], 2 pp	CLAc
No. 44, Hale's Tours Films, August 1906, 4 pp	CLAc
No. 47, The Female Highwayman, November 1906, 6 pp	CLAc
No. 49, The Tramp Dog, December 1906, 6 pp	CLAc, CLCM
No. 52, The Girl From Montana, March 1907, 4 pp	CLAc
No. 56, The Masher, June 1907, 4 pp	CLAc
No. 57, Western Justice, June 1907, 4 pp	CLAc, CLCM
No. 58, The Bookworm, July 1907, 4 pp	CLAc
No. 59, Matinee Idol, July 1907, 4 pp	CLAc
No. 60, The Onion Fiend, July 1907, 4 pp	CLAc

No. 62, All's Well That Ends Well, August 1907, 4 pp	CLAc
No. 64, A Life for a Life, September 1907, 4 pp	CLAc
No. 66/67, The Girl and the Judge/Motoring Under Difficulties, October 1907, 4 pp	CLAc
No. 68, A Southern Romance, October 1907, 4 pp	CLAc
No. 69, What A Pipe Did, November 1907, 4 pp	CLAc
No. 70, Wooing and Wedding a Coon, November 1907, 4 pp	CLAc, CLCM
No. 71, The Tin Wedding, November 1907, 4 pp	CLAc
No. 72, Mike, the Model, November 1907, 4 pp	CLAc
No. 74, The Eviction, December 1907, 4 pp	CLAc
No. 75, The Two Orphans, December 1907, 4 pp	CLAc
No. 76, The Four Footed Hero, December 1907, 4 pp	CLAc
1907 Catalogue of The Selig Polyscope and Library of Selig Films, 1907, 144 pp	CLAc
No. 77/78, The Financial Scare/Newly Wed's First Meal, January 1908 4 pp	CLAc
No. 79, The Irish Blacksmith, January 1908, 4 pp	CLAc
No. 82, Monte Cristo, January 1908, 4 pp	CLAc
No. 83/84, Just His Luck/ A Leap Year Proposal, February 1908, 4 pp	CLAc
No. 88, The French Spy, March 1908, 4 pp	CLAc
No. 90/91, Friday the 13th/Swash-Buckler, 19 March 1908, 4 pp	CLAc
No. 94, Mishaps of a Bashful Man, 9 April 1908, 4 pp	CLAc
No. 96, The Holy City, 23 April 1908, 4 pp	CLAc
No. 97, Rip Van Winkle, 30 April 1908, 4 pp	CLAc
No. 98, The Blue Bonnet, 7 May 1908, 4 pp	CLAc
No. 99/100, Troubles of a New Drug Clerk/Summer Boarders Taken In, 14 May 1908, 4 pp	CLAc
No. 101, The Shadow of the Law, 21 May 1908, 6 pp	CLAc
No. 102/103, In the Nick of Time/Not Yet But Soon, 28 May 1908, 4 pp	CLAc

No. 104, East Lynne, 4 June 1908, 4 pp	CLAc
No. 105, The Hidden Hand, 11 June 1908, 4 pp	CLAc
No. 106, The Fighting Parson/The Multnomah Falls, 18 June 1908, 4 pp	CLAc
No. 107, Damon and Pythias, June 1908, 4 pp	CLAc
No. 108, The Spirit of "76", 2 July 1908, 4 pp	CLAc
No. 109, An Indian's Gratitude, 9 July 1908, 4 pp	CLAc
No. 110, A Tale of Two Cities/The Only Way, 16 July 1908, 4 pp	CLAc
No. 111, Bobby White in Wonderland/Weary Waggles' Busy Day, 23 July 1908, 4 pp	CLAc
No. 112, The Road to Ruin, 30 July 1908, 4 pp	CLAc
No. 113, The Cowboy's Baby, 6 August 1908, 4 pp	CLAc
No. 115, The Lion's Bride/A Hindoo's Ring, 13 August 1908, 4 pp	CLAc
No. 117, Romance of the Old Mill/A Pair of Kids, 27 August 1908, 4 pp	CLAc
No. 118, The Power of Labor, 3 September 1908, 6 pp	CLAc
No. 119, The Cattle Rustlers, 10 September 1908, 4 pp	CLAc
No. 120, Crazyed by Jealousy, 17 September 1908, 4 pp	CLAc
No. 121, A Great Wrong Righted/A Magical Tramp, 24 September 1908, 4 pp	CLAc
No. 122, A Daughter of Erin, 1 October 1908, 6 pp	CLAc
No. 123, The Ranchman's Love, 8 October 1908, 6 pp	CLAc
No. 124, One of the Bravest, 15 October 1908, 6 pp	CLAc
No. 125, The Fisherman's Rival, 22 October 1908, 6 pp	CLAc
No. 126, Lights and Shadows of Chinatown, 29 October 1908, 4 pp	CACc
No. 127, The Actor's Child, 5 November 1908, 4 pp	CLAc
No. 128, A Mountain Feud, 12 November 1908, 6 pp	CLAc
No. 129, A Hidden Treasure, 19 November 1908, 4 pp	CLAc
No. 130, On Thanksgiving Day, 26 November 1908, 4 pp	CLAc
No. 131, A Dual Life/The Football Fiend, 3 December 1908, 4 pp	CLAc

No. 132, The Queen of the Arena, 10 December 1908, 4 pp

CLAC

No. 133, A Montana Schoolmarm, 17 December 1908, 6 pp

CLAC

No. 134, The Duke's Motto, 24 December 1908, 4 pp

CLAC

No. 135, In the Shenandoah Valley, 31 December 1908, 4 pp

CLAC