

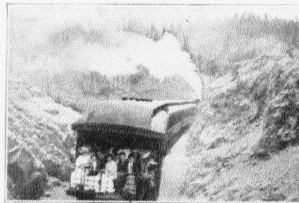
*History of film of coach scenic at
me and*
Supplement No. 44, August 1906

HALES' TOURS FILMS

These Films are made expressly for the use of
HALES' TOURS CARS OF THE WORLD

They are beautiful scenic productions taken from all
parts of the world. Each set has a Comedy Film
interspersed, suitable for the Tour.

ALL ARE OF THE VERY BEST QUALITY



1802—*The Leadville Sleeper.* Code Absalom.

Consisting of a trip through Red Rock Canon, then a hold-up of the sleeper,
finishing with a trip over the famous Georgetown Loop.

Length 615 feet. Price \$73.80

1806—*Trip Through Colorado.* Code Academe.

Opening up with a trip through the beautiful Royal Gorge, then a trip follow-
ing the Ute Pass Express, stopping at Glenwood Springs to see the fun and wind-
ing up with a run through Ute Pass. Length 600 feet. *75* Price \$72.00

1810—*Trip Up Pike's Peak.* Code Acaleph. *# 71.40*

A trip through Hell Gate, the old method of climbing Pike's Peak. Train
leaving Manitou, the Cog Road, a trip on the Cog Road, arriving at the summit,
leaving the summit, Toboggan on the Cog Road. Completing the trip with a run
through the Black Canon. Length 575 feet. Price \$69.00

1821—*Trip Over Cripple Creek Short Line.* Code Acanthine.

This is one of the most wonderful and realistic views of Mountain railroading
ever made. A special train over the famous Cripple Creek Short Line is in the
picture constantly and on the rear platform is a group of pretty girls in summer
dress. Their smiling faces and actions add much to the picture and give a touch
of novelty never before attempted. The engine ahead is seen to puff and pant up

the heavy grades and around the short curves, dashing into black tunnels and along narrow shelves hewn out of the solid rock. Snowcapped mountains, grassy valleys and monster rock formations are seen. The start is made at Cripple Creek where the greatest mines are quickly seen in a short panorama of the richest part of the district. Then the climb over Hoosier Pass, through Cathedral Park, and down the Eastern Slope of the Rockies until Point Sublime and the great view of the plains is seen. Words cannot describe the beauty of this film.

Length 600 feet.....Price \$72.00

1825—Ute Pass From Freight Train. Code *Acclimated* *in Colo.*

This subject also departs from the conventional. The first section shows a locomotive just ahead and gives a wonderful idea of the busy life of the fireman and engineer. The rolling and pitching of the engine and tender are very realistic. The scene starts at Divide on the Colorado Midland and runs down the pass until Pike's Peak, covered with snow, is seen just ahead. Then the camera is taken to the caboose and the freight train is seen ahead winding around the tortuous curves into tunnels and rounding steep crags. The background is sublime. The entire picture is filled with hypnotic views that make the beholder steady himself to catch the motion of rounding curves. It is impossible not to imagine that you are actually on the train. The scene closes at Manitou. Length 600 feet.....Price \$72.00

1829—Trip to Denver and Vicinity. Code *Accordant*. #68.70

Consisting of a trip through the business portion of Denver from a trolley car, part of residence section. Seeing a fire run from a trolley car. Finishing with a trip of the Colorado Southern. Length 600 feet.....Price \$72.00

1834—Trip Along the Columbia River. Code *Accme*. #62.70

Consisting of a trip along the Columbia River, showing the river and scenery. Then Spokane Falls, Rays Dam, stopping for a few minutes to view the Salmon fishing and for the Chicago-Portland Special to pass. Then continuing the trip. Closing with a run to the Multnomah Falls. One of the prettiest films ever made. Length 625 feet.....Price \$75.00

1841—Trip to Niagara Falls. Code *Accumbent*. #68.00

Consisting of a run to Niagara Falls, a beautiful view of the Niagara Falls. Closing with a run over the Gorge Railway. Very fine. Length 625 feet.....Price \$75.00

1849—Trip to Switzerland. Code *Accustom*. #70.32

Consisting of a trip up Mt. Blanc, giving a fine view of the Alps showing the Glaciers in the distance, passing over bridges, then a trip through beautiful snow covered valleys. Moonlight emerging on the other side of the mountain. Descending the Alps at a great speed into the town of Chamonix, where it stops at the station. Very fine. Length 635 feet.....Price \$76.20

1854—Trip to Borneo and Celon. Code *acerate*.

Consisting of a trip through the Jungles of Borneo, showing the dense foliage, then a stop to see the natives bathing and at work. Closing with a beautiful trip through Ceylon. Length 600 feet.....Price \$72.00

1861—Trip Through Ireland. Code *Ascendent*.

Consisting of a trip from Glenbrook to Monkstown, giving a very pretty view of the country on one side and the water on the other, a short stop is made showing

a splendid panoramic view of the Giants Causeway with hundreds of tourists arriving at the station, clambering over the irregular heights of the Columnar Basalt. Then closing the journey in the lovely little railway from Glenwood to Drake's Pool. Length 615 feet.....Price \$73.80

1866—Trip to England. Code *Acolyte*.

Opening with a trip through Conway on the London and Northwestern Ry., passing through country rich with scenery, also showing Conway Castle, next a trip through London, showing views of typical London life and closing with another trip on the London and Northwestern Railway. A very fine trip. Length 565 feet.....Price \$67.80

1871—Making Up of a Train in England. Code *Acquaint*.

This trip is a genuine novelty in the way of a car tour, as it shows the making up of a train between Rugby Crewe and Preston, England. The train arriving and leaving stations. Showing the panorama of scenery and train under full headway. General views of the interior of signal boxes, the great junctions, Irish mail picking up water at 50 miles an hour. Picking up mail at full speed. The Irish mail overtaking the Scotch Express. All of these scenes are panorama scenes as they were taken from another train following the one above mentioned. Length 575 feet.....Price \$69.00

1876—Trip Through Chicago and Vicinity. Code *Acquire*.

Showing a trip from a trolley car of State Street on one of the busiest days. Then a trip over the Union Loop. What happened on a street corner. Then closing with a trip through the residence section. Length 550 feet.....Price \$66.00

1881—Trip to Chattanooga and Lookout Mt. Code *Acquit*.

Consisting of a trip to Chattanooga Trolley ride, Chattanooga at the top panoramic view from top showing Sunset Rock. Closing with a trolley ride in Chattanooga. Length 600 feet.....Price \$72.00

1891—A Trip to St. Augustine, Fla. Code *Acrostatic*.

St. Augustine, Fla., the oldest city in the United States, situated on the Florida and East Coast Ry. This trip consists of a ride on the East Coast Ry., then a trip through St. Augustine on St. George's street, the oldest street in the city where all the curio shops are situated, then through the old Gateway of the town. The trip is then continued on the East Coast Ry. Very fine. Length 600 feet.....Price \$72.00

1896—Trip to Jacksonville Fla. Code *Actuary*.

Jacksonville is the largest city in the state of Florida. All Northern and Western lines here connect with the Florida East Coast Line, after a delightful trip on the railroad the city is entered and a trip through the main streets showing the beautiful palm trees is shown. The trip is completed with a ride on the East Coast Ry. Length 555 feet.....Price \$66.00

1904—Trip to Tampa, Fla. Code *Adage*. #53.40

This trip consists of a ride on the Seaboard Air Line Ry., then a ride trip through the most interesting sights in Tampa. Then continuing the trip on the Seaboard Air Line. Length 600 feet.....Price \$72.00

1912—*From North to South.* Code Adequate.

A trip From Cincinnati to Palm Beach.

The opening scene is taken in Cincinnati in the winter. The trees are covered with ice and snow presenting a beautiful appearance. Then a railroad trip and a side trip showing Palm Beach, closing with a ride through Palm Groves and Pine Apple fields on the Florida East Coast Ry. Length 600 feet. . . . Price \$72.00

1917—*From Tacoma to Seattle.* Code Adjacent.

This is one of the finest trips that we have, leaving Tacoma passing through the beautiful scenery along the line and winding up in Seattle. Very fine. Length 600 feet. . . . Price \$72.00

1925—*Through Utah.* Code Adjure.

Another very fine trip through Platte Canon showing the Rocky Gorges and the rushing river along side of the tracks. Then follows a comic scene too funny to describe. Closing with a panoramic scene down the Alpine Pass. The prettiest of all Rocky Mountain scenery. Length 620 feet. . . . Price \$74.40

1931—*Trip Through the Coeur D. Alene Mts.* Code Admix.

A very fine trip consisting of a ride through Canons. So sharp are the turns and so abrupt the walls that a hundred times the locomotive seems about to dash into the solid walls of rock, only to make a quick turn round an unseen point. Then continuing over bridges on through the country then into the most picturesque portion of the wonderful Gorges of the Rockies, through the massive granite walls and awe inspiring scenery. This trip is photographically perfect and gives an excellent idea of the peculiar difficulties encountered in building a road through a narrow Canon. Length 600 feet. . . . Price \$72.00

1937—*Trip Through Black Hills.* Code Adonic.

A very fine trip and one that every car show should have. It starts with the train leaving the station, then a panorama with a double leader ahead. Panorama climbing the Mountains, stopping for a comic scene showing the difficulties of trying to dress in a Pullman berth, closing the trip by arriving in a station. Length 615 feet. . . . Price \$73.80

1945—*Trip Through Arkansas.* Code Adrian.

Opening with a trip over the Memphis and Ft. Scott Ry. bridge. Panorama of Memphis. Street scene, with a side splitting comedy film followed by a panorama through White River Valley, closing with a panorama on the Iron Mountain Ry. Length 600 feet. . . . Price \$72.00

1951—*A trip over the Argentine Central* Code Aghast.

This trip is different from all others. In the first place, it is the highest railroad in the world, most of the scenes are taken above timber line. The scenery is grand and several panoramas taken from the highest point, showing the numerous snow capped peaks. The comedy features of the trip consist of a tourist party of young lady teachers engaging in a snow fight. Sliding down a snow bank, etc., concluding with another panoramic view of grand scenery down the opposite side. As a trip this is without an equal, and photographically perfect. Length 600 feet. . . . Price \$72.00

THE SELIG POLYSCOPE CO.

43-45 Peck Court

CHICAGO, ILL

Western Agent, H. H. BUCKWALTER, Denver, Colo.