

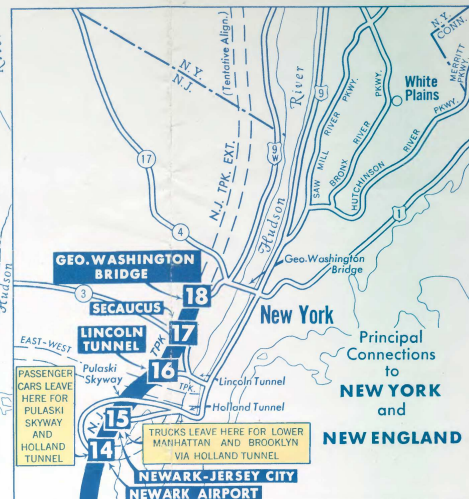
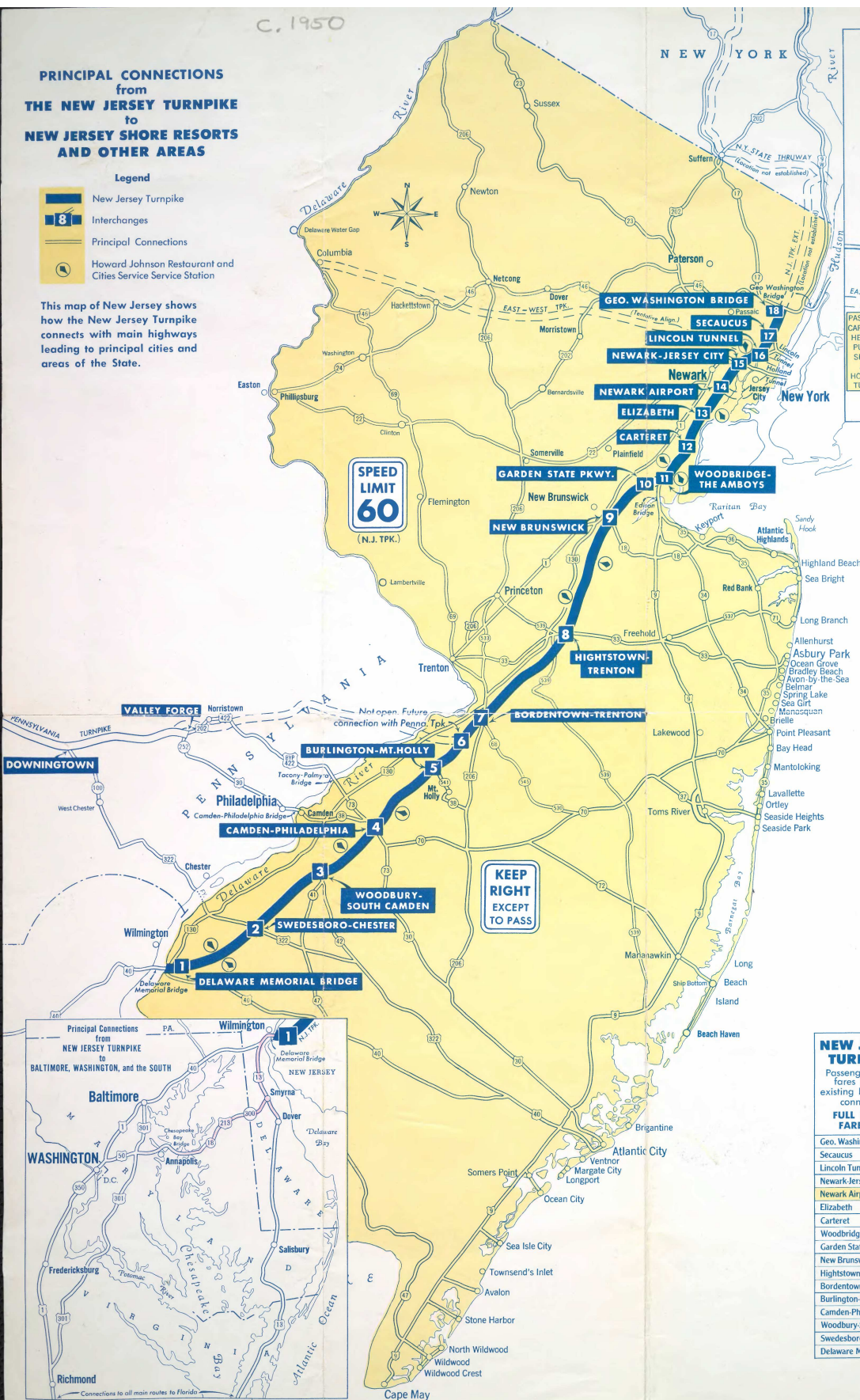
C. 1950

PRINCIPAL CONNECTIONS from THE NEW JERSEY TURNPIKE to NEW JERSEY SHORE RESORTS AND OTHER AREAS

Legend

- New Jersey Turnpike
- Interchanges
- Principal Connections
- Howard Johnson Restaurant and Cities Service Service Station

This map of New Jersey shows how the New Jersey Turnpike connects with main highways leading to principal cities and areas of the State.



NEW JERSEY TURNPIKE

118 MILES OF EFFORTLESS DRIVING!

New Jersey traditionally has been the corridor between New York and Philadelphia, the country's first and third largest cities... between New England and the south and west. More than 60% of the vehicles traveling on the Turnpike carry out-of-state licenses.

The New Jersey Turnpike affords direct connections with all leading highways to the north, south and west. This superb new express highway makes it possible to travel more safely and more quickly than ever before—in almost half the time it takes on parallel free State highways.

TRUCK TOLL RATES

FOR THE FULL 118 MILES

- 2-Axle Dual-Tire Truck.....\$3.50
- 3-Axle Single Unit Truck.....\$4.00
- 3-Axle Semi-Trailer Combination.....\$4.50
- 4 or more Axle Semi-Trailer Combination.....\$5.00

Lower Toll Rates for Shorter Distances

NEW JERSEY TURNPIKE	18	17	16	15	14	13	12	11	10	9	8	7	6	5	4	3	2	1
Passenger car toll fares between existing interchange connections																		
FULL LENGTH FARE: \$1.75																		
Geo. Washington Br.	18	.15	*	.40	.50	.70	.85	.95	*	.110	.125	.140	.150	.160	.170	.175	.175	
Secaucus	17	.15	*	.25	.35	.55	.70	.80	*	.95	.110	.125	.135	.145	.155	.170	.175	
Lincoln Tunnel	16	*	*	.20	.30	.50	.65	.75	*	.90	.105	.120	.130	.140	.150	.165	.175	
Newark Jersey City	15	.40	.25	.20	*	.10	.30	.45	.55	*	.70	.85	.100	.110	.120	.130	.145	.160
Newark Airport	14	.50	.35	.30	.10	*	.20	.35	.45	*	.60	.75	.90	.100	.110	.120	.135	.150
Elizabeth	13	.70	.55	.50	.30	.20	*	.15	.25	*	.40	.55	.70	.80	.90	.100	.115	.130
Carteret	12	.85	.70	.65	.45	.35	.15	*	*	*	.55	.70	.85	.95	.105	.115	.125	
Woodbridge-Amboys	11	.95	.80	.75	.55	.45	.25	*	*	*	.65	.80	.95	.105	.115	.125	.135	
Garden State Pkwy.	10	*	*	*	*	*	*	*	*	*	.75	.90	.100	.110	.120	.130	.140	
New Brunswick	9	.110	.95	.90	.70	.60	.40	*	.15	.10	.15	.30	.40	.50	.60	.75	.90	
Hightstown-Trenton	8	.125	.110	.105	.85	.75	.55	*	.30	.25	.15	.25	.35	.45	.60	.75	.90	
Bordentown-Trenton	7	.140	.125	.120	.100	.90	.70	*	.45	.40	.30	.15	.20	.30	.40	.50	.60	
Burlington-Mt. Holly	6	.150	.135	.130	.110	.100	.80	*	.55	.50	.40	.25	.10	.10	.20	.35	.50	
Camden-Philadelphia	5	.160	.145	.140	.120	.110	.90	*	.65	.60	.50	.35	.20	.10	.10	.25	.40	
Woodbury-So. Camden	4	.170	.155	.150	.130	.120	.100	*	.75	.70	.60	.45	.30	.20	.10	.15	.30	
Swedesboro-Chester	3	.175	.170	.165	.145	.135	.115	*	.90	.85	.75	.60	.45	.35	.25	.15	.15	
Delaware Mem. Br.	1	.175	.175	.175	.160	.150	.130	*	.105	.100	.90	.75	.60	.50	.40	.30	.15	

* No access to and from the North * No access to and from the South
To find fare between two interchanges, read across from starting point to destination.
For example, the fare between Newark Airport and Bordentown-Trenton is 90 cents.

ENGINEERED FOR MORE ENJOYABLE, MORE RELAXED DRIVING

The modern highway construction and safety engineering incorporated into The New Jersey Turnpike are designed to minimize traffic hazards and driving strain. As a consequence, the Turnpike has an outstanding safety record, surpassing that of the national public highway system. You can best enjoy the benefits of this safer, sounder highway engineering if you follow these simple rules:

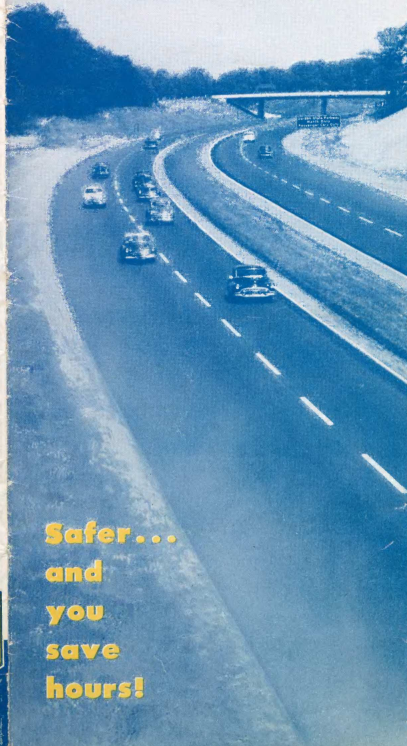
- Have your car and tires checked regularly to avoid mechanical failures and blowouts.
- Stay within the speed limit of 60 miles an hour, or as otherwise posted.
- Always keep to the right. Pass vehicles *only* on the left. "Weaving" from lane to lane is unlawful.
- Maintain a reasonable distance from the car ahead of you.
- Never stop on travel lanes. In case of a breakdown, move to the right-hand shoulder and await police aid.
- On leaving the Turnpike, observe the lower speed limits on State highways — 50 miles an hour, or as otherwise posted.



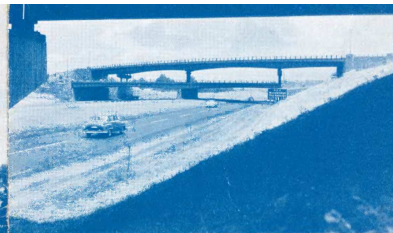
**NEW JERSEY TURNPIKE
AUTHORITY**

Administration Building, New Brunswick, N. J

Return to Best NEW JERSEY TURNPIKE



**Safer...
and
you
save
hours!**



No crossroads on the Turnpike. The picture above shows three bridges over the Turnpike in the Woodbridge area.



Night driving is made safer by reflectorized lane striping and side delineators. Shown above is the Hackensack River Bridge, one of the largest on the Turnpike.

Safety... built into The New Jersey Turnpike

The most modern of the multi-lane express highways, affording substantial savings in travel time with utmost safety.

Six lanes — three in each direction — from the Lincoln Tunnel Interchange (No. 16) to Woodbridge-The Amboys Interchange (No. 11), connecting with leading highways to Jersey's famed shore resorts. Plans contemplate early expansion to six lanes all the way from George Washington Bridge Interchange (No. 18) to Camden-Philadelphia Interchange (No. 4).

Wide travel lanes, flanked by finished shoulders on the outside and inside, provide comfortable driving with safety at all times.

Extra heavy foundation and asphaltic concrete pavement — ranging from 36 to 42 inches in thickness — supply a riding surface of high non-skid quality.

Lanes are clearly marked with extra wide reflectorized striping and are posted on the outside with large reflectorized delineators for the full length of the highway for safe driving at night.

The Authority plans (a) a direct connection to the Pennsylvania Turnpike and (b) an extension

to cross Newark Bay to Jersey City and the Holland Tunnel. It is also studying a direct connection to the New York Thruway.

THE NEW JERSEY TURNPIKE AUTHORITY

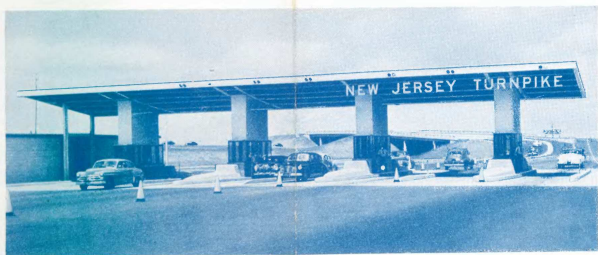
The New Jersey Turnpike Authority is a State-created body consisting of three non-salaried Commissioners appointed by the Governor to supervise the operation of the New Jersey Turnpike. The construction of the Turnpike was financed by revenue bonds sold to the public. All facilities of the Authority are self-supporting and self-liquidating. Not one penny of taxpayer's money is used. No government funds (national, state or local) are used, and there are no subsidies of any kind. All expenses, including salaries of the State Police patrolling the Turnpike, are paid by the Turnpike Authority.

Turnpike income remaining after payment of (1) operating and maintenance costs and (2) bond interest, is devoted to accelerated retirement of the bonds so that the highway may be turned over to the State, without a cent of cost to the taxpayer, in a much shorter time than the thirty-five years originally contemplated.

Front cover depicts a four-lane section of the Turnpike, north of New Brunswick.

NY 5012/NC/081/1950AA

C 1950



Typical toll booth entrance to The New Jersey Turnpike.

17

TRAFFIC INTERCHANGES GIVE QUICKEST, MOST DIRECT CONNECTIONS WITH PRINCIPAL HIGHWAYS...

- TO BALTIMORE, WASHINGTON, RICHMOND AND POINTS SOUTH
- TO NEW YORK AND NEW ENGLAND
- TO PHILADELPHIA, PITTSBURGH AND POINTS WEST
- TO NEW JERSEY SHORE AND LAKE RESORTS AND OTHER AREAS

When you get on the Turnpike you relax . . . for 118 miles of effortless driving from the Hudson to the Delaware! Everything has been done to make your journey across New Jersey safe, comfortable, time-saving.

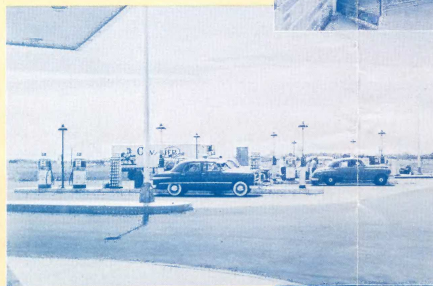
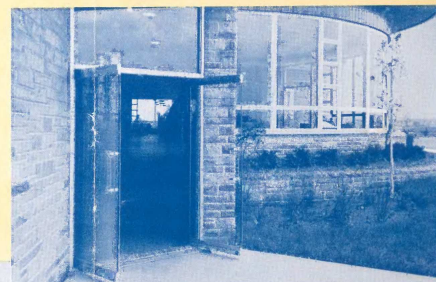
There are no stop lights, no cross traffic, no congestion, no sharp curves or steep grades. Signs and markers will lead you to your destination without confusion, without delay. Fine restaurants and service stations are ready to serve you along the highway. Get on or off at the 17 convenient traffic interchanges that connect with main highways.

Yes! You'll save time and temper on the Turnpike!

OVERNIGHT ACCOMMODATIONS

Clean, attractive overnight accommodations are conveniently near all 17 traffic interchanges. Stay for a few days, if you can, and relax at New Jersey's famed shore and lake resorts.

**EVERYTHING
FOR YOUR
SAFETY,
COMFORT,
CONVENIENCE**



Each of 10 service areas along the Turnpike offers excellent restaurant (or snack bar), rest room, service station, and parking facilities. Shown at the top, a typical restaurant exterior; center, service station and parking area; bottom, restaurant interior, where good food and good service help make your journey pleasant, comfortable.

