

The Little Easter Fairy.

LENGTH, 470 FEET.

A poor little girl while doing errands for mother meets a richly dressed girl who apparently lost her way. She comforts the crying tot and brings her home to her beautiful mansion.

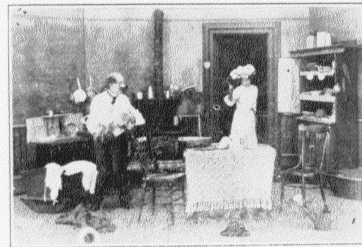
A few days later while the poor girl stands longingly before a confectionery store the rich girl comes out of the store and recognizing her kind friend gives her the Easter egg she just purchased. The mother sitting in an automobile waiting on the street inquires for the little girl's address.



The poor girl runs home and shows her mother the beautiful Easter egg she received from the rich little girl. After having partaken of her simple supper the mother brings her to bed. In her dream she sees how the Easter egg grows, it opens, out comes ducks and bunnies making all kinds of funny tricks. Just then the door opens, the little girl awakens and finds in her room her little friend accompanied by her mother and valet. They bring her Easter presents to repay her for her kindness.

COPYRIGHT 1908

SOMETHING



ON HIS MIND

MANUFACTURED EXCLUSIVELY BY

S. LUBIN

MANUFACTURER OF

Life Motion

Films, Slides



Picture Machines,

and Stereopticons.

Lubin Building, 926-928 Market St.

PHILADELPHIA PA., U. S. A.