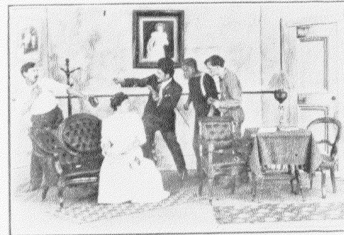


## REDEEMED FROM SIN.

LENGTH, 635 FEET.

COPYRIGHTED 1908.

John is a model young man and a steady workman. His only fault is his uncontrollable temper. In a moment of anger he picks up a stone with which he kills, though unintentionally, his fellow workman. This deed drives him to flee from the place of his birth, from home and from parents. He tries hard to forget, picking up work here and there but the terrible deed haunts him driving him trying to cross the street was almost under the hoofs of the horse when John risking his own life saved the man. He was knocked down and carried unconscious to the hospital, where the vision of an angel appears over him blessing him, as he has redeemed his sin by sacrificing his life for the life he took.



from place to place. Hungry and tired he marches through the streets of a large city. Suddenly he sees a runaway horse swaying down the street. A blind man just

NO. 142

## SALOME AND THE DEVIL TO PAY.

LENGTH, 335 FEET

COPYRIGHT 1908.

A young married man at the dinner table describes gleefully a performance of "Salome" that he has witnessed and announces his intention of seeing "The Devil." This shocks not only his wife, the spinster aunt joins with his father and mother in roasting the plays to a finish. Dinner is over. Unknown to each other the women negro cook who creates all kinds of excitement until police and fire department take matters in hand.



slip out of the house to see "Salome" and the men to see "The Devil." The craze is not confined to the drawing room for all the servants do likewise.

The next morning everybody is "Devil-crazy" and "Salome-mad," especially the

NO. 135



S. LUBIN

MANUFACTURER OF

Life Motion Picture Machines, Films, Slides and Stereopticons.

Lubin Building, 926-928 Market St., Phila., Pa.