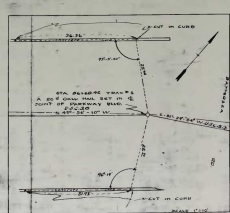
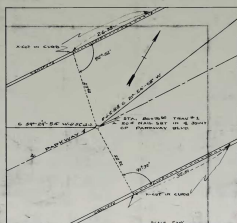
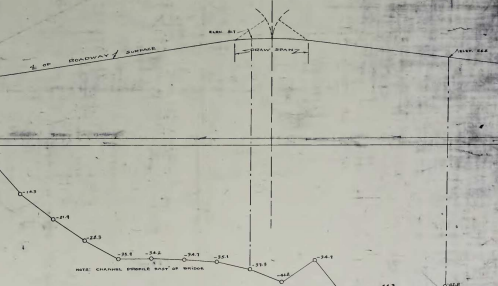
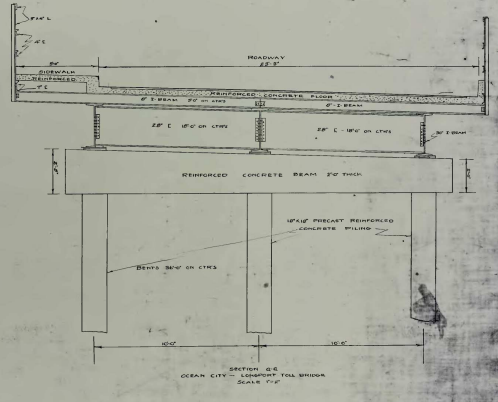
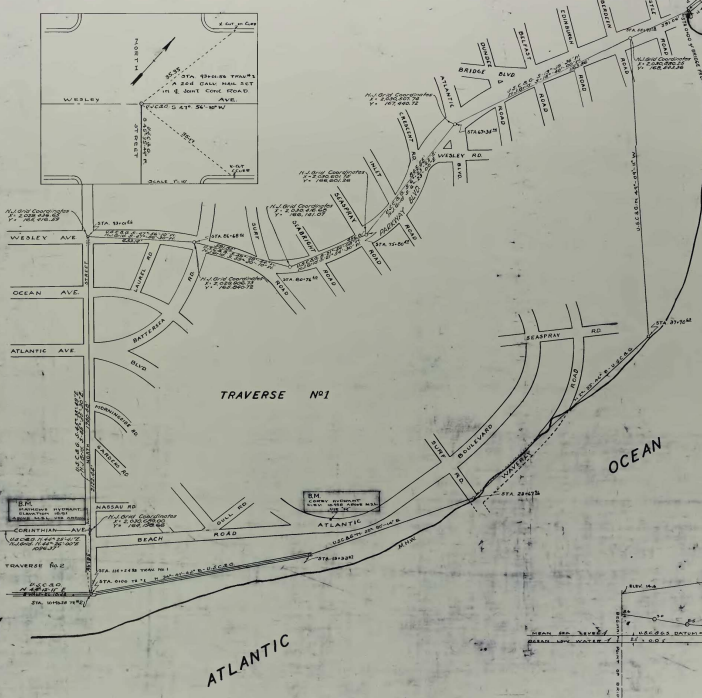
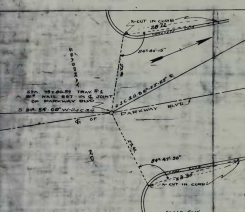
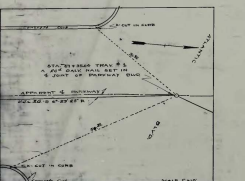
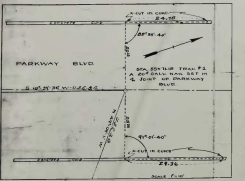


CITY OF OCEAN CITY



DATA: SEE PLAN IN 3-24 FOR CLEARANCE, WIDTH OF CHANNEL, ETC.
 PROFILE - CHANNEL AND OCEAN CITY - LORRYPORT BRIDGE, HIGHWAY
 FROM STA. ONE BEARING POINT OF BEGINNER TO STA. TWO AND AHEAD 4'
 SCALE: HORIZ. 1"=40' VERT. 1"=4'
 OCTOBER 1924

DATE	ELEVATION	EQUALITY
1924	10.00	BEAN - HIGH WATER
1924	9.50	M.S.L. - USUALS P.M.S.
1924	9.00	OCEAN - LOW WATER

ALL BENCH MARK ELEVATIONS REFER TO USCGC CHART M.S.L.
 ALL OTHER ELEVATIONS REFER TO OCEAN LOW WATER ELEVATION

NEW JERSEY STATE - E-9-4
 HARRISON-TRENTON-ANTWERP-SUMNER
 COUNTY CIVIL ENGINEER PROJECT 3277M
 COAST LINE
 JOHN J. COUGHLIN, CIVIL ENGINEER
 100 N. 3RD ST. OCEAN CITY, N.J.

C.M. 42