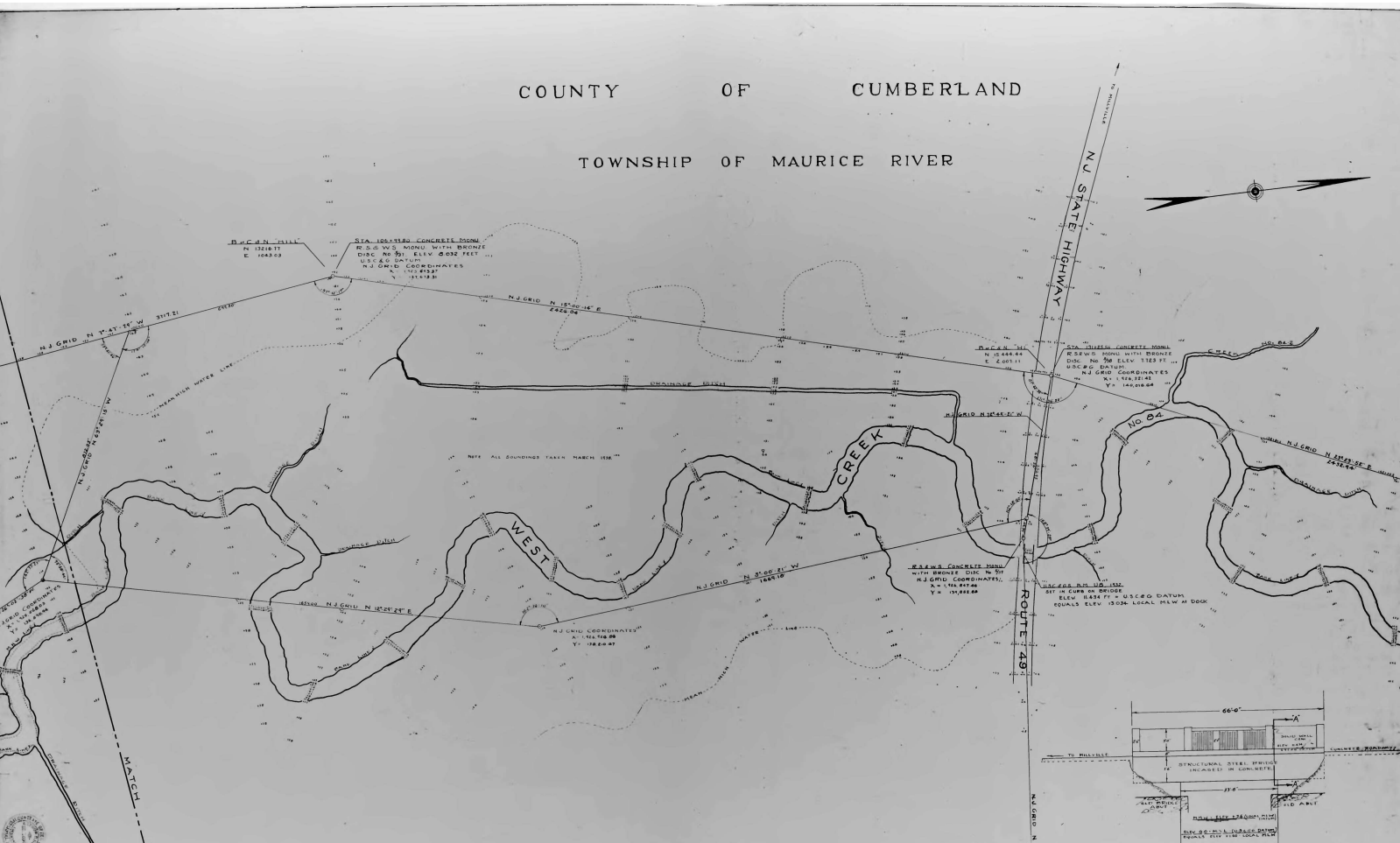


COUNTY OF CUMBERLAND

TOWNSHIP OF MAURICE RIVER

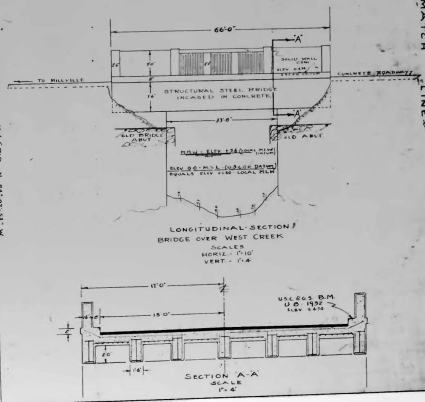


N.J. STATE HIGHWAY ROUTE 488



TOWNSHIP OF DENNIS

COUNTY OF CAPE MAY



OPM 21
WPA NEW JERSEY BRIDGE
REPAIRS & STREAM IMPROVEMENT
DATE: 11/18/11
SCALE: 1" = 100'