



ISLAND BEACH

ATLANTIC OCEAN

MATCH LINE FOR SHEET 17A

MATCH LINE FOR SHEET 17

U.S. CASS STATION

INLET

EXISTING TO BARRIEN LIGHT NE2
110° 00' 00" W 100.00' 00" S

110° 00' 00" W 100.00' 00" S

INLET DECEMBER 1934
MHW + 3.50 LEGAL LEVELS
M.L.W. + 3.00 LEGAL LEVELS
M.L.W. 0.00 FOR LOCAL LEVELS

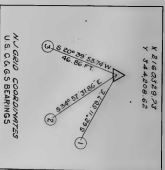
SHEET N° 16 **018** **20**

NEW JERSEY STATE ENGINEER
RICHARD STEAM & WATERWAYS SURVEY
COUNTY OF OCEANA PROJECT 372185

FROM FORKED RIVER COAST LINE
TO INLET

DOWN BY LOCAL LEVELS
SHEET N° 15 OCEANA COUNTY FIELD BOOK 20

COUNTY FILE NO. HOBBS FILE NO.



INLET DECEMBER 1934
MHW + 3.50 LEGAL LEVELS
M.L.W. + 3.00 LEGAL LEVELS
M.L.W. 0.00 FOR LOCAL LEVELS

INLET DECEMBER 1934
MHW + 3.50 LEGAL LEVELS
M.L.W. + 3.00 LEGAL LEVELS
M.L.W. 0.00 FOR LOCAL LEVELS

SHEET N° 16 **018** **20**

NEW JERSEY STATE ENGINEER
RICHARD STEAM & WATERWAYS SURVEY
COUNTY OF OCEANA PROJECT 372185

FROM FORKED RIVER COAST LINE
TO INLET

DOWN BY LOCAL LEVELS
SHEET N° 15 OCEANA COUNTY FIELD BOOK 20

COUNTY FILE NO. HOBBS FILE NO.