

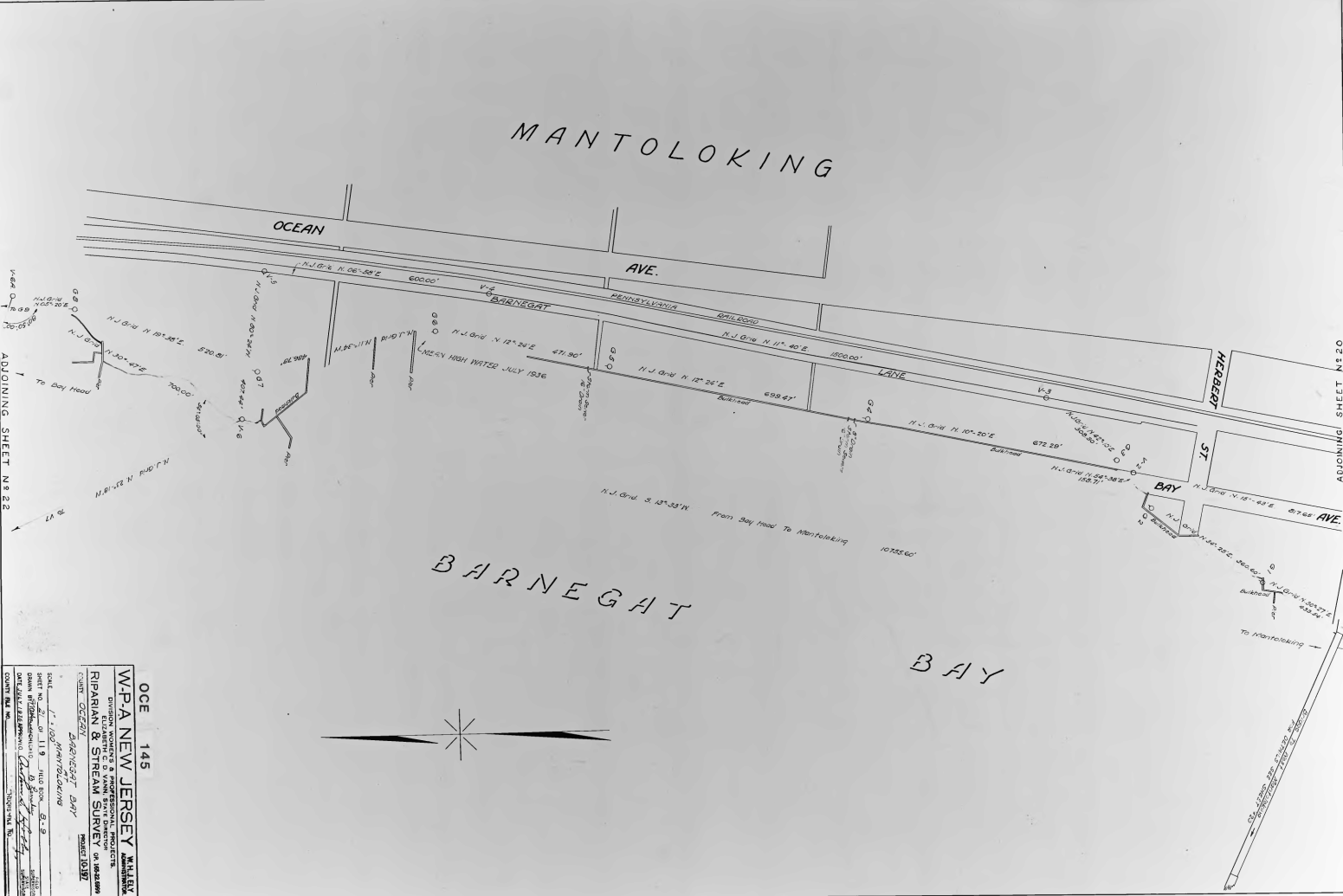
# MANTOLOKING

OCEAN

AVE.

# BARNEGAT

# BAY



ADJOINING SHEET N22

ADJOINING SHEET N20

OCE 145

W.P.A. NEW JERSEY  
 DIVISION OF WATER & PROFESSIONAL PROJECTS  
 RIPARIAN & STREAM SURVEY OF BARNEGAT  
 COUNTY, OCEAN  
 DATE: 1982  
 DRAWN BY: DAVIDSON, DAN  
 CHECKED BY: [Signature]