

A Merry Xmas To All IL MESSAGGERO

THE MESSENGER

OLDEST AND MOST LARGELY CIRCULATED ITALIAN-AMERICAN WEEKLY NEWSPAPER IN PASSAIC AND BERGEN COUNTIES

Vol. XXXIII.—No. 1701

PATERSON, N. J., THURSDAY, DECEMBER 23, 1937

3 Cents a Copy

The Clairvoyant

By OJAY

IF THE LATEST tip received by this department is the "McCoy", we'll be calling Tommy Vigorito "Commissioner" shortly after the turn of the New Year.... Just what duties will be detailed to Monsieur Vigorito are not known at this writing.

MAYOR ELECT STAFFORD has as yet made no appointments to city offices, but rumors have it that several vacancies will be filled shortly after he steps into office on January 1.... Alderman Thomas A. Tonge has been mentioned prominently for the post of mayor's secretary.... but now they're whispering that a certain newspaperman who has played a leading part in Democratic campaigns in the past, has the inside track.... Anthony J. Grossi and many others are reported out for the job, but.... Stafford is planning a reception for the county committeemen and women in the Elks Club after his induction into office.... among the outstanding workers for the Mayor Elect were Joseph A. Durgett, WPA music supervisor, and acting Captain of Detectives James J. Smith.

ALTHOUGH NO recognition has as yet been forthcoming to Assemblyman Gabriel C. Roberto, Democratic chieftains are reported giving the matter full consideration.

REPUBLICAN COUNTY Leader Lloyd B. Marsh has recovered from a recent illness and may be seen in Trenton occupying a more important post after the first of the year.... wonder just where the G. O. P. controlled freeholders' board will begin their "cutting" in order to do away with extra expense.... some of the baskets given out at the Republican party headquarters the other day certainly did not go to needy families as advertised in the papers.

SHERIFF JOHN A. GAVIN will not appoint another under-sheriff for the present.... passage of a bill requiring all doctors in public institutions to be licensed by law in the state was urged by Freeholder Leo V. Becker, M. D. at a meeting of the Passaic County Democratic Club Tuesday.... is the Doc still interested in that Valley View job?.... "Commissioner" James D. Sees is planning for the next campaign.... In this connection, it might be wise for Democratic leaders to do something to hold his vote.

CHARLES B. ROONEY is hoping (continued on page 8)

FIVE CITY WPA PROJECTS, COSTING \$28,243, ARE O. K.'d

Approval for five WPA projects in Paterson came from President Roosevelt in Washington this week. According to Mayor Hinchliffe, the city's outlay for these projects will be relatively small since the major portion of money expended will go toward providing labor. The approximate cost is estimated at \$28,243.

County Survey

Appearing on a list of other approved WPA projects was one proposed by Passaic county calling

for a survey of boundary lines of the county. The sum of \$38,298 has been appropriated for this work.

City projects approved include one for setting up a new file of records for the office of the State Rehabilitation commission at a cost of \$1,931 an index of the city charter at a cost of \$14,840; a survey of streets at a cost of \$6,452; a survey of all city parks and maps of the same, costing \$1,968; and a compilation of records of the police and fire commission at a cost of \$3,152.

Blaze Damages Silk Plant On Matlock Street

Firemen fought a stiff blaze in a four story brick mill building at 79 Matlock street Tuesday night and subdued it only after heavy water damage had been done in the plant of the Konrad Silk mill on the second floor of the plant.

The third floor of the building was the scene of the fire and since it was unoccupied, damage there was not serious. The Commercial Kees Dye Works, located on the first floor, also was seriously damaged by water.

Detectives investigated a report that an explosion had been heard by residents near the plant immediately prior to the discovery of the blaze, but could uncover no evidence of incendiarism.

Speakers Blast Chain Gang System At Rally For Mix

Friends and sympathizers of Fleming Mix, 19 year old Paterson Negro youth whose extradition to North Carolina to serve the remainder of a 10 year chain gang sentence was asked last week, gathered at a mass meeting in the I. O. O. F. last night and heard powerful pleas for aid in his cause made by his mother, his attorney and prominent Negro leaders of the community.

The meeting was held under the auspices of the Paterson branch of the National Negro Congress and was presided over by the Rev. W. A. Swan.

Opening Blast

"Mix's name will stand for the opening blast to banish the chain gang from the penal institutions of this country once and for all," de-

clared Victor Greenberg, attorney for the Negro youth.

"The first charge against Mix was murder," he continued, "and for three days he didn't even know whom he was supposed to have murdered. Then the charge was altered. He was given an opportunity to speak in his own defense and inside three minutes he was sentenced to the chain gang for 10 years for rape."

Life Worthless

"If he goes back to the south," Greenberg warned, "his life will not be worth anything. His friends might just as well reconcile themselves to the fact that they will not see him again."

"We'll build a movement as big as Scottsboro," declared Martha Stone, another speaker. "Let's do it the American, constitutional way."

SLATED FOR DIRECTORSHIP



ROBERT WARDLE

FREEHOLDERS TO BE HEADED BY WARDLE

G.O.P. Member Will Succeed Scheidemann As Board Director

ROAD POST FOR NIXON

Robert Wardle will become director of the board of freeholders at the turn of the new year, it was reliably reported yesterday.

The Republican members of the board who hold the majority of power on that body, were said to have agreed on a slate detailing board duties among its members for the coming year.

Finance To McNaughton

According to reports, John Nixon will become chairman of the road committee while the finance committee chairmanship will go to Freeholder John McNaughton.

Departments for Nicholas Martini and Leonard M. Ward, other Republican members of the board of freeholders, have not been decided upon yet.

Tax Reduction Necessary Says J. D. Hetherington

James D. Hetherington, candidate for mayor in the last election, declared in a talk before the Italian War Veterans' association this week, that a reduction in taxes was necessary before Paterson can truly find the road to recovery once more.

"If working men expect to have work in industry", Hetherington said, "their first job is to get lower taxes. In order to secure industries, the city must be in a position to offer at least as good inducements as the many other cities throughout the country who are bidding for them."

QUIZ RIDERS IN MURDER OF BARHORST

Totowa Driver Shot Through Heart In Hold-Up

BELIEVE KILLER A WOMAN

Police today were scheduled to quiz the 26 passengers who rode on the bus out of Rutherford to North Newark on which William Barhorst, 37 year old driver of 532 Totowa Road, Totowa, was murdered Tuesday night.

Belleville authorities issued a call to passengers on the bus which the murdered man drove to present themselves for testimony regarding the slayer. The fare box showed 26 passengers had been on the vehicle, though only two or three were believed to have been present at the time of the slaying.

By this means, police hope to get an accurate description of the slayer, believed by some to have been a woman. The motive was described as a holdup. A bus driver, driving in the other direction, however, maintains that there were only two men on the Barhorst bus when he passed it two blocks from the scene of the murder.

The victim's funeral is scheduled for Christmas day.

Installation Of Parking Meters Is Halted Here

Work on the installation of parking meters which began early in the week was halted by the Kar-park Meter company pending a decision in the suit of the Renclark Realty company by Supreme Court Justice Harry Heber.

The Renclark company seeks to nullify the contract, but received a temporary setback Saturday in Trenton when Justice Heber declared himself "not inclined to grant a writ" requested by the company.

Some 75 standards upon which the meters will be placed were erected along Broadway before the company reached its decision.

YOUTH LEAVES HOME, TURNS UP IN PATERSON

Police turned over Anthony Ragonesi, 17 year old New York youth to his parents yesterday, after the boy had entered police headquarters Tuesday night and told authorities that he had run away from home and had been stranded in Paterson.

His motive for leaving home was that he was tired of attending high school.

GAS YIELDING MORE MILEAGE SAVINGS TO THE MOTORISTS

Major Engine Betterments Are Held Responsible For Improvement, Most Amazing In Field

The most amazing chapter in technical progress that has been written in any engineering field in more than a year is revealed in the performance figures in gasoline mileage tests on the latest model auto mobiles.

Virtually every day brings new evidence of this truth. Now, with complete returns about in, the writer of things automotive can tap out what must be the happiest story the average motor owner has read in years.

Without going into details about road tests for gasoline economy, the fact remains that in nearly all instances the cars of 1938 give better fuel mileage than those of a year or two ago.

Economy test drivers, of course, know how to get the most out of every drop of fuel and their mileage will probably be better than that of the average driver. But even at that the driver who is more or less wasteful with fuel because of the way he handles his car, knows that he was getting better mileage with every new car he bought.

Jobs On Farm In Decline By 13%

Everywhere But New England, So. Central And Rocky Mountain States Showed Gains

Farm employment declined approximately 13 per cent between November 1 and December 1, according to a report made by the Bureau of Agricultural Economics.

The Bureau said an average of 280 persons were employed per 100 farms on December 1, compared with 304 a month earlier. The December 1 rate also was five less than on the corresponding date last year.

New England, South Central and Rocky Mountain States reported gains for the year, but all other sections had losses.

END OF RFC RELIEF

Jones Wants Authority To Take 2.5 Billions Off The Books

Congress will be asked by Chairman Jesse Jones, of the RFC, for authority to wipe off RFC books all locations of two and a half billion

dollars to government agencies for relief and other purposes.

Jones, it is understood, believes that this is essential to meet criticism that the RFC balance sheet now presents a false picture because it carries unrecoverable assets along with recoverable assets.

The transaction would be of a bookkeeping nature entirely, it was understood.

MAY HASTEN JOBLESS AID

But Jersey Officials See Danger In President's Plan To Make Advances On Benefits

President Roosevelt's benefit payment recommendations on the New Jersey funds will be studied by members of the Unemployment Compensation Commission, who will make a final analysis of the effect of the request.

The President asked congressional leaders yesterday to change the federal social security law so New Jersey and other states could advance the payment of unemployment benefits to January 1, 1938. Under existing law New Jersey will not begin benefit payments until January 1, 1939.

The President's recommendation was discussed at an informal meeting of the commission with the Governor. While no official statement was made, reports were the Governor and commission members were opposed to advancing the date for benefit payments. The commission is not disposed to become involved in controversy with the White House, however, and probably will not take an official stand in opposition at this time.

EAT MORE PEANUTS And You'll Have Earned Gratitude

Of Enfield, N. C. Farmers

The farm folk of Enfield, North Carolina will deem it a great favor if monkeys, elephants and small boys will eat more peanuts.

Turning from cotton and tobacco to a new "cash" crop, Eastern North Carolina farmers built up a gigantic peanut industry. Up, up went the "ground pea" production until it mounted this year to 243,000,000 pounds.

And down, down went the price until it reached a rock bottom of 3.5 cents a pound. The peanut stabilization corporation, through loans to the farmers, is trying to peg the price at that figure.

NO RULING ON METERS

Justice Heher Not Inclined To Let Meter Test Take Place — No Decision In Paterson Case

Withholding final decision on the matter, Supreme Court Justice Heher said he was not inclined to permit a legal test of the rights of a city to install parking meters. Briefs are being filed with the Justice in the Paterson case which he heard.

The application before Heher was made by Rencark Realty Co., which contended installation of the meters takes away the citizen's right of free use of streets. Harry H. Weinberger, who appeared for Rencark, said the meters could not be installed legally in any municipality in the state.

John Milton, who appeared for the city, declared the meters were an exercise of police power.

Heher said he believed there must be traffic regulations and that the meters provide a five cent charge more to make the parking ordinance effective than to penalize users of the streets or for raising revenue.

"Miracles" In Building Unlikely Because Of New Laws On Mortgages

"Economic Realists" Sound Warning In Letter To Roosevelt—In Accord With Plan, However

Styling themselves "Economic Realists" a group of business and professional leaders sounded a call against the nation expecting sudden miracles of home building activities from additional mortgage reform. The group, however, is generally in accord with the President's aim to stimulate building.

The committee has for the past two years been advocating a comprehensive attack on the problems confronting private enterprise home building. Acknowledging the importance and value of the reforms now being developed in the mortgage lending field, Alvin Fred, chairman of the committee stated, in a letter addressed to the President in part:

"Unless we quickly find the formula which will accomplish integrated activity in home building, all our efforts at mortgage reform will be futile. No one can reasonably expect labor to accept wage rate reduction, without adequate guarantees of continuity of employ-

ment. This can only come when there are adequately capitalized home building companies to give integrity to labor contracts. No one can reasonably expect manufacturers to give prices based upon mass production unless they have the security of customers with credit. And by the same token, no one can expect adequate capital investment and sound management when local communities, labor and other factors prevent profitable operations."

CREDIT JEWELER

DIAMONDS - WATCHES

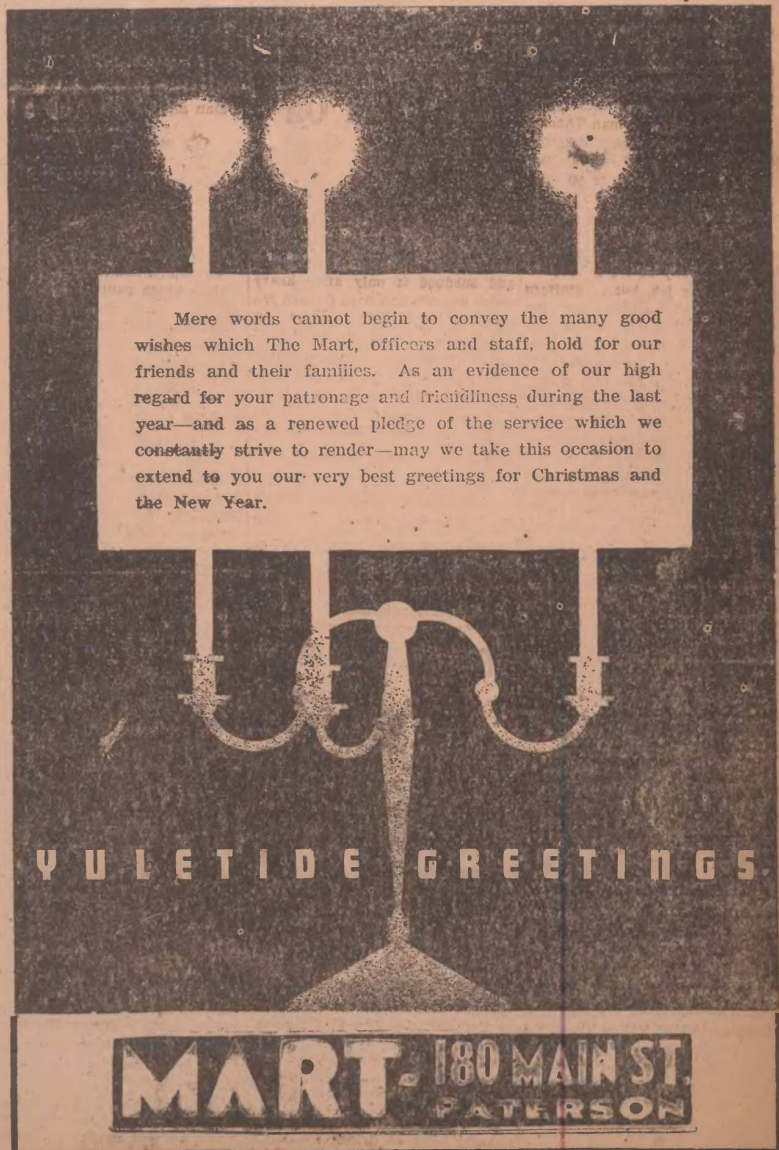
Pay As You Earn

C. Alvino

86 MARKET ST. PATERSON

Sherwood 2-4662

SEND IN YOUR NEWS



Mere words cannot begin to convey the many good wishes which The Mart, officers and staff, hold for our friends and their families. As an evidence of our high regard for your patronage and friendliness during the last year—and as a renewed pledge of the service which we constantly strive to render—may we take this occasion to extend to you our very best greetings for Christmas and the New Year.

VIOLETIDE GREETINGS

MART 180 MAIN ST. PATERSON



FLOWERS

for **EVERY OCCASION**

- WEDDING BOUQUETS
- FUNERAL WREATHS
- CORSAGES • BOUQUETS

FRESHLY CUT — REASONABLY PRICED

Christmas Wreaths \$.75 up

Grave Coverings \$1. up

WHITE LILY FLORIST

Telephone Sherwood 2-8556

86½ MARKET STREET

Paterson, New Jersey

JOSEPH MADUNIO, Manager

"IL MESSAGGERO"

Published Weekly on Every Thursday

VINCENT S. PARRILLO PUBLISHER

Entered as second class matter at the Post Office at Paterson, New Jersey, under the Act of March 3, 1879.

64 Hamilton Street Phone Armory 4-1626

Paterson, New Jersey

**YES, A MERRIER CHRISTMAS**

Christmas wreaths in windows and draped on doors in green give the community the atmosphere of good cheer at Christmas. Lights in outdoor Christmas trees signal a welcome to approaching guests.

Some homes, however, are without wreaths, without trees, where guests seldom come.

You have an opportunity of being that guest. Indirectly, but with full spirit, you can be that guest. There is at present a diligent committee selecting the homes that will be paid a visit by various committees with Christmas baskets, coal and other tokens of cheer.

There have been presented to you a number of means of aiding the needy at Christmas here in Paterson. If you haven't yet participated in one of these basket fund benefits, it still isn't too late.

Your own window wreaths will be greener and your Christmas lights brighter, if you do this.

For the first time New Jersey is regarded as a unit by the church, with more than a million communicants of the Roman Catholic church embraced in the rearrangement by which Bishop Walsh becomes archbishop and Jersey has the dioceses of Paterson and Camden, besides Newark and Trenton. Church members everywhere are proud of the recognition accorded Bishop Walsh by Pope Pius XI.

DOWN WITH THESE PROPHETS

Pessimists making speeches and writing books about how the future holds no promise, and about how there are no new frontiers, no new horizons towards which American can march, have the assistance of those who believe we must scrap present ways of doing things in order to start all over again with a new system.

An excellent reply to both these types of persons comes from Charles F. Kettering, who heads the research division of General Motors. He is an excellent illustration of the progress an individual can make, for he was born a poor farm boy and now is a vice-president of one of America's biggest corporations. He believes:

"Suppose, for each year since mankind has been able to write, we had a letter on file expressing what people thought of the past and of the prospects of the future. Let us go back and pick out a letter somewhere along the line, I don't care where, and open and read it. This letter would read like this: 'We don't see how the world got along in the old day because they had none of the things we have, but we don't see much possibility of improving things in the future.'"

Kettering gives an even more apt illustration by quoting a letter written in 1905 to Winton Automobile Company by the great Andrew Carnegie, who said:

"We are greatly pleased with our new Winton. From the very start it has done its work and never failed us. There may be improvements yet to come even in such autos, but it is difficult to see much room for them."

No room or chance for progress? For better and better living? The prophets of despair obviously don't know their history.

"O, Little Town of Bethlehem..."

Thus begins one of our best-loved songs in honor of that small community which gave to the world two thousand years ago something that has been cherished down the ages as infinitely precious.

And now at this season of the year when our thoughts turn to the events which have made that little town of Bethlehem forever famous; let us, who also live in a small community, think also of the blessings that come to us because of that fact.

Let us think of the neighborliness, the friendly interest in each other's welfare, the sharing in each other's joys and sorrows, the close kinship in ideals and aspirations which are characteristic of such a community as ours.

Let us increase that neighborliness, that spirit of helpfulness, that unity of purpose in making our community a better place in which to live. Let us renew our faith in our own "little town" and be proud of it and its people—our neighbors and our friends.

It is in this spirit that your Home Town Paper, a community institution devoted to the best interests of our community, reminds you of that other "little town" and with it sends you its best wishes for a Merry Christmas and a greater measure of happiness in our community than it has ever known before.

THE PUBLISHERS

SWEAT AND TAXES

A telegram to Chairman Vinson of the House Tax Subcommittee and Chairman Harrison, of the Senate Finance Committee, sent by A. W. Robertson of the Westinghouse Electric, reports that his corporation taxes were \$2,500,000 in 1934, \$5,000,000 in 1935, 9,000,000 in 1936 and \$16,000,000 in 1937.

He observed that "it is well to remember that money paid out in taxes cannot be paid in wages. Perhaps taxes we are collecting to pay for relief are the very things causing unemployment."

This is no new idea. President Roosevelt, in 1932, said: "Taxes are paid in the sweat of every man who works because they are a burden on production and can be paid only by production. If excessive they are reflected in idle factories, tax-sold farms, and hence in hordes of the hungry tramping the streets and seeking jobs in vain. Our workers may never see a tax bill, but they pay in reduction of wages, in increased cost of what they buy or (as now) in broad cessation of employment."

PROSPECTS FOR TELEVISION

Great Britain at present is ahead of Americans in television only because we have not yet reached an acceptable form for widespread use. Engineers, now working on the problem, hope to have it ready for a dress rehearsal in a few years.

An authority here says that American engineers have eliminated the unsatisfactory greenish image, replacing it with the familiar black and white, that they have increased the size of the picture to 7 to 10 inches and provided a system of projecting them on a screen 3 by 4 feet, about the size of home movies.

Experts report that television's range is about 30 miles, and this would require 2,000 transmitters to give adequate coverage to the entire country. The transmitters would have to be linked with coaxial cable and to do this would cost \$500,000,000. The next problem is, where is the money coming from?

From these facts, it is concluded that it is extremely probable that television, when it is introduced, will be available only in the larger cities.

Bell Co. Ready For Christmas Phone Traffic

The New Jersey Bell Telephone Company expects to handle the greatest volume of long distance telephone traffic in its history this Christmas.

Last year, the first in which the lower night rates were carried over to apply on Christmas Day as well, a record volume of calls taxed the switching centers and long lines linking New Jersey with the rest of the country and the world. This year, because the lower rates normally apply nights and Sundays and Christmas comes on a Saturday, the period of reduced cost for exchanging greetings with relatives and friends will extend from Friday evening at 7 o'clock until Monday morning at 4:30, and still heavier traffic is expected.

Ready For Rush

Preparations have been made accordingly. In New Jersey every available long distance operator will be at her position, aided by experienced assistants from local exchanges and by former operators who have volunteered their services. Additional direct circuits have been established to points most frequently called at Christmas, sixty four of them at the Newark Long Distance center alone, which handles half of the state's distance calls. All over the country similar precautions have been taken and thousands of circuits set up for Christmas traffic.

These arrangements are expected to prove adequate, and it is anticipated that the record telephone traffic over the long lines network will be handled with the usual dispatch in almost all instances. Traffic on the through voice highways across the country, however, may encounter some delay during the hours when calling is at its peak. It has not been possible to add sufficient such circuits to handle completely on a "no delay" basis an expected traffic load which peaks far above that of the next busiest day in the year.

In New Jersey, judging from past Christmas experience, the "rush" hours will be Christmas Eve; between 10 o'clock in the morning and 2 o'clock in the afternoon Christmas Day, and after 7 o'clock Christmas night.

New Policy Set At College Of Paterson

High School seniors graduating in January will be given a valuable opportunity at the College of Paterson of becoming full fledged Sop homores by next September, instead of entering college as Freshmen at that time.

This procedure, practiced in leading universities, is made possible by entering the College of Paterson in February and studying in the twelve week Summer Session.

"Young men and women today," President Robinson of the College of Paterson declared this week, "must be given the opportunity of obtaining a complete education at our finest schools and colleges, with as little loss of time as possible. Keen competition and harsh economic requirements in the modern professional and business worlds make time saving almost as important as the acquisition of fundamental skills and knowledge."

"IL MESSAGGERO"

Published Weekly on Every Thursday

VINCENT S. FARRILLO PUBLISHER

Entered as second class matter at the Post Office at Paterson, New Jersey, under the Act of March 3, 1879.

64 Hamilton Street

Phone Armory 4-1626

Paterson, New Jersey

**YES, A MERRIER CHRISTMAS**

Christmas wreaths in windows and draped on doors in green give the community the atmosphere of good cheer at Christmas. Lights in outdoor Christmas trees signal a welcome to approaching guests.

Some homes, however, are without wreaths, without trees, where guests seldom come.

You have an opportunity of being that guest. Indirectly, but with full spirit, you can be that guest. There is at present a diligent committee selecting the homes that will be paid a visit by various committees with Christmas baskets, coal and other tokens of cheer.

There have been presented to you a number of means of aiding the needy at Christmas here in Paterson. If you haven't yet participated in one of these basket fund benefits, it still isn't too late.

Your own window wreaths will be greener and your Christmas lights brighter, if you do this.

For the first time New Jersey is regarded as a unit by the church, with more than a million communicants of the Roman Catholic church embraced in the rearrangement by which Bishop Walsh becomes archbishop and Jersey has the dioceses of Paterson and Camden, besides Newark and Trenton. Church members everywhere are proud of the recognition accorded Bishop Walsh by Pope Pius XI.

DOWN WITH THESE PROPHETS

Pessimists making speeches and writing books about how the future holds no promise, and about how there are no new frontiers, no new horizons towards which American can march, have the assistance of those who believe we must scrap present ways of doing things in order to start all over again with a new system.

An excellent reply to both these types of persons comes from Charles F. Kettering, who heads the research division of General Motors. He is an excellent illustration of the progress an individual can make, for he was born a poor farm boy and now is a vice-president of one of America's biggest corporations. He believes:

"Suppose, for each year since mankind has been able to write, we had a letter on file expressing what people thought of the past and of the prospects of the future. Let us go back and pick out a letter somewhere along the line, I don't care where, and open and read it. This letter would read like this: 'We don't see how the world got along in the old day because they had none of the things we have, but we don't see much possibility of improving things in the future.'"

Kettering gives an even more apt illustration by quoting a letter written in 1905 to Winton Automobile Company by the great Andrew Carnegie, who said:

"We are greatly pleased with our new Winton. From the very start it has done its work and never failed us. There may be improvements yet to come even in such autos, but it is difficult to see much room for them."

No room or chance for progress? For better and better living? The prophets of despair obviously don't know their history.

"O, Little Town of Bethlehem..."

Thus begins one of our best-loved songs in honor of that small community which gave to the world two thousand years ago something that has been cherished down the ages as infinitely precious.

And now at this season of the year when our thoughts turn to the events which have made that little town of Bethlehem forever famous, let us, who also live in a small community, think also of the blessings that come to us because of that fact.

Let us think of the neighborliness, the friendly interest in each other's welfare, the sharing in each other's joys and sorrows, the close kinship in ideals and aspirations which are characteristic of such a community as ours.

Let us increase that neighborliness, that spirit of helpfulness, that unity of purpose in making our community a better place in which to live. Let us renew our faith in our own "little town" and be proud of it and its people—our neighbors and our friends.

It is in this spirit that your Home Town Paper, a community institution devoted to the best interests of our community, reminds you of that other "little town" and with it sends you its best wishes for a Merry Christmas and a greater measure of happiness in our community than it has ever known before.

THE PUBLISHERS

SWEAT AND TAXES

A telegram to Chairman Vinson of the House Tax Subcommittee and Chairman Harrison, of the Senate Finance Committee, sent by A. W. Robertson of the Westinghouse Electric, reports that his corporation taxes were \$2,500,000 in 1934, \$5,000,000 in 1935, 9,000,000 in 1936 and \$16,000,000 in 1937.

He observed that "it is well to remember that money paid out in taxes cannot be paid in wages. Perhaps taxes we are collecting to pay for relief are the very things causing unemployment."

This is no new idea. President Roosevelt, in 1932, said: "Taxes are paid in the sweat of every man who abets because they are a burden on production and can be paid only by production. If excessive they are reflected in idle factories, tax-sold farms, and hence in hordes of the hungry tramping the streets and seeking jobs in vain. Our workers may never see a tax bill, but they pay in reduction of wages, in increased cost of what they buy or (as now) in broad cessation of employment."

PROSPECTS FOR TELEVISION

Great Britain at present is ahead of Americans in television only because we have not yet reached an acceptable form for widespread use. Engineers, now working on the problem, hope to have it ready for a dress rehearsal in a few years.

An authority here says that American engineers have eliminated the unsatisfactory greenish image, replacing it with the familiar black and white, that they have increased the size of the picture to 7 to 10 inches and provided a system of projecting them on a screen 3 by 4 feet, about the size of home movies.

Experts report that television's range is about 30 miles, and this would require 2,000 transmitters to give adequate coverage to the entire country. The transmitters would have to be linked with coaxial cable and to do this would cost \$500,000,000. The next problem is, where is the money coming from?

From these facts, it is concluded that it is extremely probable that television, when it is introduced, will be available only in the larger cities.

Bell Co. Ready For Christmas Phone Traffic

The New Jersey Bell Telephone Company expects to handle the greatest volume of long distance telephone traffic in its history this Christmas.

Last year, the first in which the lower night rates were carried over to apply on Christmas Day as well, a record volume of calls taxed the switching centers and long lines linking New Jersey with the rest of the country and the world. This year, because the lower rates normally apply nights and Sundays and Christmas comes on a Saturday, the period of reduced cost for exchanging greetings with relatives and friends will extend from Friday evening at 7 o'clock until Monday morning at 4:30, and still heavier traffic is expected.

Ready For Rush

Preparations have been made accordingly. In New Jersey every available long distance operator will be at her position, aided by experienced assistants from local exchanges and by former operators who have volunteered their services. Additional direct circuits have been established to points most frequently called at Christmas, sixty-four of them at the Newark Long Distance center alone, which handles half of the state's distance calls. All over the country similar precautions have been taken and thousands of circuits set up for Christmas traffic.

These arrangements are expected to prove adequate, and it is anticipated that the record telephone traffic over the long lines network will be handled with the usual dispatch in almost all instances. Traffic on the through voice highways across the country, however, may encounter some delay during the hours when calling is at its peak. It has not been possible to add sufficient such circuits to handle completely on a "no delay" basis an expected traffic load which peaks far above that of the next busiest day in the year.

In New Jersey, judging from past Christmas experience, the "rush" hours will be Christmas Eve; between 10 o'clock in the morning and 2 o'clock in the afternoon Christmas Day, and after 7 o'clock Christmas night.

New Policy Set At College Of Paterson

High School seniors graduating in January will be given a valuable opportunity at the College of Paterson of becoming full fledged Sophomores by next September, instead of entering college as Freshmen at that time.

This procedure, practiced in leading universities, is made possible by entering the College of Paterson in February and studying in the twelve week Summer Session. "Young men and women today," President Robinson of the College of Paterson declared this week, "must be given the opportunity of obtaining a complete education at our finest schools and colleges, with as little loss of time as possible. Keen competition and harsh economic requirements in the modern professional and business world make time saving almost as important as the acquisition of fundamental skills and knowledge."

Schoen Scores County Neglect Of Federal Aid

The "do-nothing" attitude of Passaic County and the city of Paterson in respect to taking advantage of the federal WPA program drew the fire of County Counsel Harry L. Schoen this week.

"Passaic county and the city of Paterson," declared Schoen, "are not taking advantage of this golden opportunity to care for the unemployed and the needy with federal assistance. Virtually every other county in the state is all set with comprehensive lists of projects."

Blames Board

"This is a problem which rests squarely in the laps of the board of freeholders and the incoming city administration. They have the choice of immediately providing projects to utilize federal assistance or the much more disastrous alternative of single handedly taking over responsibility for an enormous relief load."

Appointment to WPA clear through the office of Mr. Schoen.

Shopping Rush Hits Crest Here

With the close of the Christmas shopping season as its impetus, business in Paterson increased 10 per cent over figures set at a corresponding time last year, according to a survey of Paterson merchants.

Gaily decorated stores in the city have been the focus for record crowds all week, with the crest due tomorrow, the last Christmas shopping day. Buying, however, was concentrated on household necessities, in contrast to luxuries.

The post office reported a marked increase in the volume of mail, noting a rise of 600 per cent over normal periods, with a great receipt of foreign mail.

LEGAL ADVERTISEMENT

A-6912
SHERIFF'S SALE IN CHANCERY OF NEW JERSEY WHEREIN The Paterson Mortgage and Title Guaranty Company, and Carl K. Withers, Commissioner of Banking and Insurance of the State of New Jersey, Trustee, etc., complainants and Philip Bellet, et al., defendants.

By virtue of the above stated writ of fieri facias, to me directed and delivered, I have levied upon and shall expose for sale by public vendue, and sell to the highest bidder, on Friday, Fourteenth day of January, 1938, at 2 o'clock in the afternoon, at the Sheriff's Office, situate in the Court House, in the City of Paterson, that is to say:

All the following tract or parcel of land and premises hereinafter particularly describe, situate, lying and being in the City of Passaic, in the County of Passaic, and State of New Jersey. Beginning on the easterly side of Columbia Avenue, at a point distant one hundred feet southerly from the southerly side of Jefferson Street, measured at right angles from Jefferson Street, and running from thence (1) southerly along the easterly side of Columbia Avenue, fifty-one and seventy eight hundredths feet more or less to the lands now or formerly of Thomas Bingham; thence (2) easterly along the line of lands of said Bingham and lands now or formerly of the Estate of Herman Schulting, one hundred ten and sixteen hundredths feet thence (3) northerly and parallel with Columbia Avenue, fifty eight and two hundredths feet more or less to a point one hundred feet southerly measured at right angles from Jefferson Street; and thence (4) westerly, parallel with Jefferson Street, one hundred six and seventy hundredths feet more or less to the point or place of beginning.

Together with the hereditaments and appurtenances thereto belonging, etc. Liens and encumbrances will be made known at the time of the sale. Approximate amount of decree \$27,371.59.

JOHN A. GAVIN,

Sheriff

Dec. 23, 30 Jan. 6, 13
The Messenger Fee, \$27.72

Indict Paterson Man As Member Of Bootleg Ring

Edward Kramer of 139 Warren street, Paterson, was among 56 persons indicted by a federal grand jury in New York City this week on charges of operating a huge bootleg conspiracy during the last three years.

Assistant United States Attorney W. Mahon Dickerson estimated that approximately \$1,800,000 in taxes have been lost by the government as a result of the alleged operations of the gang.

He declared that two of the stills operated by the gang were located in Clifton and Delawanna. Three other local men, Peter Chirichello of West Paterson, Edward Watkins of Delawanna and Frederick Dyer of Rutherford were among those indicted.

Sex Crime Unit Formed In State By Cl. Kimberling

A Sex Crime Bureau, to collaborate with municipal police in gathering information on sex offenses and offenders, was formulated by Colonel Mark O. Kimberling, superintendent of State Police.

Municipal police departments, said Kimberling, already have given state police a list of 1,000 offenders with all known facts about their crimes and habits.

FIRM MOVES



THOMAS PIOMBO
president of the Silk City Leather Co., who announced the location of his firm in new quarters, 88 Market street, a few doors from Main street, this week.

Phone Sherwood 2-5725

M. Masino
and
F. Cortese

Importers and Wholesale

Dealers in

ITALIAN GROCERIES

Olive Oil A Specialty

48 CROSS ST.

Paterson

New Jersey

Telephone Sherwood 2-0979

J. ANGELILLO, Prop.

MAKE YOUR CHRISTMAS HOLIDAY

More Enjoyable With Our

PASTRIES

FOLLOW THE CROWD!

Get in the Good Habit

Paterson Pastry Shop

We Specialize in

CAKES AND TRAYS

FOR WEDDINGS, ENGAGEMENTS AND BAPTISMS

MOST DELICIOUS SWEETS

GELATI AND SPUMONI

71 Market St.

Paterson, N. J.



ANNUAL 1-4 OFF SALE Of Men's Clothing

At 25 Per Cent Off—Original Price

You Deduct 25 Per Cent

Remember Original Tags Are On All Merchandise
—You Deduct 25 Per Cent—

\$18.75

were.....\$25

\$22.50

were.....\$30

\$26.25

were.....\$35

\$30.00

were.....\$40

\$33.75

were.....\$45

\$37.50

were.....\$50

Stein-Bloch, Middishade, Eagle Silverstrobe

LOUIS LEVINE and SON

192 MARKET ST.

PATERSON, N. J.

Up-to-the
Minute

GIBBS

Men's
Wear

XMAS GIFTS

Outstanding Values of High Grade Men's Wear at Popular Prices



Hand-Tailored
NECKWEAR
GIFT BOXES FREE

55¢-2 for 1.00

New Shirting
Fabrics

1.35 to 1.95

Specially Selected Scarfs
Pure Wool and Selected Silks

1.00 to 2.95

Interwoven Hose 39c to 75c

Silk and Lisle Hose . . . 27c, 4 prs. \$1

FOWNES and MEYERS GLOVES 1.00 to 3.95

HICKOK BELTS AND JEWELRY

PURE LEATHER WALLET 1.00 to 3.95

Pure Wool Sweaters . . . 1.95 to 5.00

PAJAMAS . . . 1.39 to 2.95

(OPEN EVENINGS UNTIL XMAS)

159
MAIN ST.
Near Van Houten

GIBBS

159
MAIN ST.
Near Van Houten

STROLLING ALONG

with Pat Ferro

When Horace Heidt and his Brigadiers switch to a nation wide NBC Blue Network on Tuesday, December 28th, a 52 week contract renewal will be theirs. The broad shouldered Heidt was a star at Culver Military Academy, and later at the University of California, when a broken vertebra cut short his athletic career. He organized his Brigadiers on the University of California Campus. With his versatile musicians, singers and specialty entertainers, he has met with wide success at home and abroad. He has been featured in most of the better known hotels and night clubs, and is currently appearing in the Bowman Room of New York's Biltmore.

Harry Glick, former welterweight champion of the world, who broadcasts his morning exercises over WJLN for early risers, has missed only two weeks of broadcasting in the last eight years.

Terri Franconi, NBC lyric tenor, is well versed in Italian, Spanish, Russian, French and English. Italian and Spanish blood flows in his veins. He was born in Italy, near Lake Como, of Spanish and Italian parents, both talented in their own right, his mother being a singer, and his dad a musician. Albania, a brother, is a popular actor in Italy.

Florence George, who was compelled to forego radio to concentrate on her first movie role in "College Swing" for Paramount, will finish her camera activities shortly, and will then accept one of several radio guest offers.

Beetle, of the Phil Baker show, provides almost as many headaches during preparation of the script, as on the other lanes. The reason, since the Beetle gags must be unexpected, as well as pertinent to the dialogue, it is difficult to plant them in the script.

Out of Towners who appear as guests on Gabriel Heatter's "We, the People" program in New York generally want to see first the Statue of Liberty, then the Aquarium, Radio City, the Empire State Building, the Stock Exchange and Chinatown, in the order named.



GLASS

Mfg. of Mirrors

Seveling, Silvering, Flower work, Glass Novelties, L. O. F. All kinds of

Safety Glass, Leaded Glass

Zeal Glass

SEVELING & MIRROR CORP.

Store Front Plate Glass

Auto Glass

387-393 E. 18th St.

Paterson

New Jersey

Sher. 2-7672

Res. Sher. 2181

★ Give your home AN EXTRA BEDROOM

SIMMONS CREATES AN Outstanding Christmas Value



NEW Pull Easy STUDIO COUCH WITH CARVED WOOD ARMS In Smart Velour Stripes \$59⁷⁵

A wonderful value! Originally intended for introduction in January, but we secured 25 to offer as a Christmas Special. Has new carved wood arms. Back to support pillows. Easiest of all couches to open. Simmons inner-spring mattress. Coil spring base. Use as a full size bed or twin beds. In high grade velour stripes—blue, brown, green or mulberry. Convenient terms arranged. Only a limited quantity.

IMPORTANT AND EXCLUSIVE FEATURES



A slight pull on back rail and the couch is transformed into a comfortable double bed or twin beds.



Pillows don't sag against wall. Back support them in a position that gives the comfort of a regular sofa.

SEES FURNITURE CO.

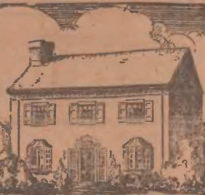
848 MAIN STREET

(Near Madison Ave.)

PATERSON, N. J.

OPEN EVENINGS

HOUSEKEEPING HINTS From The HOUSE PRACTICAL OF PUBLIC SERVICE



CHRISTMAS! It is in the air now. Conversation turns to it. Buildings are decorated. Holiday invitations are in the mails. Are you planning a feast for a large gathering of the clan? No matter how many your guests number, you have a reputation as a hostess to maintain and the turkey must be cooked just right. Ah, that turkey! Tender slices of white meat, succulent pieces of the dark, gravy rich and smooth and a dressing that makes every one say "How did you do it?"

Here are recipes for dressing that will do just that.



Standard Dressing (12-16 lb. turkey)

1 1/2 lb. loaf bread, 1 tsp. salt
stale (12 cups) 1/2 tsp. white
bread pepper
crumbs 1/4 cup minced
1/2 lb. butter onion

Remove crusts and cut bread into one inch cubes or crumbs. Melt butter and combine with all the other ingredients. Mix well.

Variations:

1. Add 1 lb. CHESTNUTS. To prepare: Place chestnuts in cold water to cover. Heat to boiling point and boil for 5 minutes. Drain. Peel and skin. Chop coarsely.
2. Add 2 cups finely chopped CELERY that is raw or has been sautéed in butter.
3. Add 1/4 to 1/2 lb. MUSHROOMS. Chop and cook slowly in 1 tsp. butter for 5 minutes.
4. Add 1 pint or more OYSTERS either raw or preheated in 2 tsp. of butter.
5. Add 1/2 to 1 lb. SAUSAGE. Brown the sausage lightly.
6. Add 1 tsp. SAGE or POULTRY SEASONING.



Then the Plum Pudding

Every hostess breathes more easily when the first mouthfuls of pudding are consumed. "It is all right again this year," she says, and is able to relax. She can forget "Perhaps I should have added more salt." "I should have taken it out just a minute sooner." Give up being a follower of Lot's wife and forget looking backwards. Use recipes that have been tested and proven and a modern gas range with an automatic oven heat regulator. Here is a recipe for plum pudding.

English Plum Pudding
1 lb. currants 1 tsp. cloves
1 lb. raisins 1 tsp. salt
1 lb. glazed 1 whole nutmeg,
pineapple ground
1 lb. glazed 1 qt. milk
cherries 1/4 cup sugar
1/2 lb. citron 8 eggs
1/2 lb. orange and 1 lb. grated
lemon rind, bread crumbs
mixed made from
1/2 lb. ground bread two
suet days old

Put all ingredients with the exception of the milk, sugar and eggs in a large mixing bowl. Beat eggs, add sugar and milk and combine mixtures. Grease and flour molds. Pour in mixture until three-fourths fill the mold. Cover, place in large kettle with water to half cover molds and steam 4 or 5 hours. Remove, cool and keep in a cool place until ready to use. Then reheat by steaming for one hour. Serve with Hard Sauce. If you have an oven heat regulator range, place puddings in oven at 275 degrees for 4 hours.

Have you ever thought of having pudding brought in in the traditional way with the sauce ablaze? The blue flame from the burning alcohol looks as if the hand of a magician has been at work.



Your Gifts

The wrapping of Christmas presents has become an art. Papers are gay with the story of Christmas and ribbons are fastened with pieces of holly. This year, you cannot be too original. Some gifts have been glimpsed encased in shining black paper and colored wool is used as cord with tassels just like those on the mittens you wore as a child.



Decorations

The house breathes with the spirit of Christmas. The windows are alight with it. The doorways are decorated and out in the garden a lighted tree twinkles a Christmas message of good will and cheer to everyone who passes by. Electric lights are the safest kind of decoration to use and they need not be expensive. A few strings of colored lights, a few illuminated Christmas symbols fastened to a tree or strung on the shrubbery will help to send the Yuletide messages abroad. If you want some novel way of decorating your dinner table or arranging lighting effects for house or garden, be sure to call upon us.

A Merry Christmas to You All



HAND TRUNKS—MILITARY BRUSHES—ZIPPER CASES
JOHN F. WETZEL
149-151 Paterson St. Paterson Near Broadway. Est. 1903
Telephone Sherwood 2-8525

LEGAL ADVERTISEMENT

SHERIFF'S SALE IN CHANCERY OF NEW JERSEY Wherein The Second National Bank of Paterson is complainant and Victory Dyeing and Finishing Company, Victory Securities Corporation, Kramer Lumber Corporation Paterson Steel and Iron Works and Atlantic Lumber Corporation are defendants. Pl. Fa. for sale of mortgaged premises.

By virtue of the above stated writ of fieri facias, to me directed and delivered, I have levied upon and sold expose for sale by public vendue, and sell to the highest bidder, on Friday, the Twenty fourth day of December 1937 at 2 o'clock in the afternoon, at the Sheriff's Office, situate in the Court House, in the City of Paterson, that is to say:

All the following tract or parcel of land and premises hereinafter particularly described, situate, lying and being in the City of Paterson in the county of Passaic and State of New Jersey.

FIRST TRACT: BEGINNING at the southeasterly corner of Shady and Bleeker Streets, and running thence (1) easterly along the southerly line of Bleeker Street three hundred and fifty feet; thence (2) southerly, parallel with Shady Street, one hundred feet; thence (3) westerly, parallel with Bleeker Street, one hundred and seventy five feet; thence (4) southerly, parallel with Shady Street, fifty feet; thence (5) northerly parallel to the northerly line of Wood Street; thence (6) westerly, along said line of Wood Street, fifty feet; thence (7) northerly parallel with Shady Street, one hundred feet; thence (8) westerly, parallel with Bleeker Street, twenty five feet; thence (9) northerly, parallel with Shady Street, twenty five feet; thence (10) northerly along the same, seventy five feet to the point or place of beginning.

Being lot Nos. 42, 43, 44, 45, 46, 47, 48, 49, 50, 51, 52, 53, 54, 55 and 56 Bleeker Street, Nos. 41, 42, 43, 44, 45 and 46 Shady Street, and Nos. 41, 42, 43, 44, 45, 46, 47, 48, 49, 50, 51, 52, 53, 54, 55 and 56 Riverside Park Lots, Third Ward, Paterson, N. J.

SECOND TRACT: BEGINNING at a point where the northerly line of Bleeker Street intersects the easterly line of Shady Street and running thence (1) easterly, along the northerly line of Bleeker Street, one hundred feet; thence (2) northerly parallel with Shady Street, twenty five feet; thence (3) westerly, parallel with Bleeker Street, one hundred feet to Shady Street and thence (4) southerly, along Shady Street, twenty five feet to the place of beginning.

Being lot Number 35 Shady Street as laid down on map of Waitt and Riverside Park Lots, Third Ward, Paterson, N. J.

THIRD TRACT: BEGINNING in the northerly line of Woods Street, at the distance of one hundred fifty feet, westerly from the westerly line of Shady Street, and running thence (1) westerly, along Woods Street, twenty five feet; thence (2) northerly, at right angles to Woods Street, one hundred feet; thence (3) easterly, parallel with the first course, twenty five feet; and thence (4) southerly, parallel with the second course, one hundred feet to the place of beginning. Said Woods Street is also known as Wood Street.

Being lot No. 57 Woods Street, as laid down on map of Riverside Park Lots, Third Ward, Paterson, New Jersey.

FOURTH TRACT: BEGINNING in the easterly line of Shady Street at a point distant seventy five feet northerly from the northerly line of Bleeker Street, and thence running (1) northerly along said line of Shady Street, twenty five feet; thence (2) easterly at right angles from Shady Street, one hundred feet; thence (3) southerly, parallel with Shady Street, twenty five feet; and thence (4) westerly parallel with the second course, one hundred feet to Shady Street at the place of beginning.

Being lot number (25) twenty nine Shady Street, as laid down on a map of the Riverside Park Lots, 3rd Ward, Paterson, N. J.

FIFTH TRACT: BEGINNING at a point on the easterly line of Shady Street distant northerly from the northerly line of Bleeker Street, twenty five feet; thence (1) easterly, parallel with the northerly line of Bleeker Street, one hundred feet; thence (2) southerly, parallel with Shady Street, twenty five feet; thence (3) westerly parallel with Bleeker Street, one hundred feet to the point or place of beginning.

Being further known as lot number thirty three (33) Shady Street as laid down on a map of Riverside Park, Paterson, New Jersey, made by J. C. Gotschall, C. E. Sept. 1921, and filed in the office of the Clerk of the County of Passaic.

SIXTH TRACT: FIRST PARCEL: BEGINNING in the northerly line of Bleeker Street distant two hundred and fifty feet easterly from the corner formed by the intersection of the northerly line of Bleeker Street with the easterly line of Shady Street and running thence (1) northerly and along the westerly line of lot 53 Bleeker Street and 45 Peol Street one hundred fifty two and thirty one hundred feet to the northerly boundary line of lands of Edward Van Houten, deceased thence (2) westerly and along said boundary line one hundred and fifty feet more or less, to the westerly line of lot 36 Peol Street; thence (3) southerly and along the westerly line of lot 36 Peol Street and 39 Bleeker Street, one hundred fifty two and forty one hundred feet, more or less, to the northerly line of Bleeker Street and thence (4) easterly and along the northerly line of Bleeker Street, one hundred and fifty feet to the point or place of beginning.

Being lots Numbers 32, 41, 43, 45, 47 and 49 Bleeker Street as laid down on map entitled "Map of Riverside Park Lots, Third Ward, Paterson, N. J."

SIXTH TRACT: SECOND PARCEL: BEGINNING in the easterly line of Shady Street distant one hundred feet northerly from the corner formed by the intersection of the easterly line of Shady Street with the northerly line of Bleeker Street running thence (1) easterly and along the southerly line of lot 27 Shady Street one hundred feet to the westerly line of lot 32 Bleeker Street; thence (2) northerly and along westerly line of lot 39 Bleeker Street and 36 Peol Street fifty four and twelve hundredths feet to the

LEGAL ADVERTISEMENT

northerly boundary line of lands of Edward Van Houten, deceased; thence (3) westerly and along the southerly line of lot 23 Shady Street, one hundred feet, more or less to the easterly line of Shady Street; thence (4) southerly and along the easterly line of Shady Street, fifty four and twelve hundredths feet, more or less, to the point or place of beginning.

Being lots Numbers 25 and 27 Shady Street as laid down on the aforesaid map.

SEVENTH TRACT: BEGINNING in the southerly line of Bleeker Street distant one hundred feet easterly from the corner formed by the intersection of the northerly line of Bleeker Street with the southerly line of Shady Street, one hundred feet; thence (1) southerly and parallel with East Fifth Street, one hundred feet; thence (2) westerly and parallel with Bleeker Street, fifty feet; thence (3) northerly and parallel with the first course, one hundred feet to the southerly line of Bleeker Street, and thence (4) easterly and along the southerly line of Bleeker Street, fifty feet to the point or place of beginning.

Being lot Number 31 Shady Street as laid down on the aforesaid map.

EIGHTH TRACT: BEGINNING in the southerly line of Bleeker Street distant one hundred feet easterly from the corner formed by the intersection of the northerly line of Bleeker Street with the southerly line of Shady Street, one hundred feet; thence (1) southerly and along the westerly line of lot 61 Bleeker Street and 48 Peol Street, one (152.31) feet to the northerly boundary line of lands of Edward Van Houten, deceased; thence (2) westerly and along said boundary line, fifty feet more or less, to the easterly line of lot No. 45 Bleeker Street; thence (3) southerly and along the easterly line of No. 45 Bleeker Street, one hundred and fifty two and sixty seven hundredths (152.67) feet more or less to the northerly line of Bleeker Street and thence (4) easterly along the northerly line of Bleeker Street, fifty feet to the point or place of beginning.

Being lots Nos. 47 and 49 Bleeker Street as laid down on map entitled "Map of Riverside Park Lots, Third Ward, Paterson, N. J."

NINTH TRACT: BEGINNING in the easterly line of Shady Street at a point distant seventy five feet southerly from the point of intersection of the southerly side of Bleeker Street and

LEGAL ADVERTISEMENT

the easterly side of Shady Street and running thence (1) easterly, parallel with said southerly line of Bleeker Street one hundred feet; thence (2) southerly parallel with the easterly line of Shady Street, twenty five feet; thence (3) westerly parallel with the first course, one hundred feet to the easterly line of Shady Street, and thence (4) northerly along the easterly line of Shady Street, twenty five feet to the point or place of beginning.

Using premises situate at and easterly known Number 47 Shady Street.

TENTH TRACT: BEGINNING in the easterly line of Shady Street at a point in the same distant fifty (50) feet north from the point of intersection of the easterly line of Shady Street and running thence (1) northerly along the easterly line of Shady Street, fifty (50) feet; thence (2) easterly and at right angles to Shady, one hundred (100) feet; thence (3) southerly parallel with Shady Street fifty (50) feet and thence (4) westerly parallel with the intersection of the easterly line of Shady Street and said second course, one hundred (100) feet to the point or place of beginning.

Being premises Numbers forty nine (49) and fifty one (51) Shady Street, as laid down on Official Assessment Map of said City.

ELEVENTH TRACT: BEGINNING in the northerly line of Woods Street distant one hundred feet easterly from the corner formed by the intersection of the northerly line of Woods Street with the easterly line of Shady Street, and running thence (1) northerly and parallel with Shady Street, one hundred feet; thence (2) easterly and parallel with Woods Street twenty five feet; thence (3) south and parallel with the first course, one hundred feet to the northerly line of Woods Street and thence (4) westerly and along the northerly line of Woods Street, twenty five feet to the point or place of beginning.

Being lot Number 39 Woods Street as laid down on map entitled "Map of Riverside Park Lots, Third Ward, Paterson, N. J."

Excepting from the Tenth Tract above described a plot twenty five feet in width and fifty feet in depth fronting on Woods Street and being the said premises heretofore conveyed by Richard Memmelaar and Annie Memmelaar, his wife to Garrett De Vries and wife.

Being the premises conveyed to the said Victory Dyeing and Finishing Company by deeds dated April 1st, 1926 and June 11th, 1923 and recorded in Books 12— pages 452, etc and Book T-30, page 10 etc

Together with all and singular the rights, privileges, tenements, hereditaments and appurtenances thereto belonging, or in anywise appertaining, and the reversion and reversions, remainder and remainders, tenements and profits thereof, including Sillers, Engines, Sprinkler System and Steam Fitting, &c.

Approximate amount of taxes is Fifty four Thousand Dollars, taxes, taxes, costs, interest and Sheriff's fees, Liens and encumbrances against the above described premises made known at the time of the sale.

JOHN A. GAVIN, Sheriff

THE MESSENGER—Fees \$165.06 Dec. 2, 9, 16, 23

Phones Sherwood 2-2424—2-2425

LAZZARA BAKING CORP.

Home of

Lazzara's Tasty Crust Bread

Delicious and Nutritious Earth Baked Bread — Give Your

Children More Of It

Lazzara's Tasty Crust, Neapolitan, Sicilian French, Vienna, Rye, Rasin, Rolls, Etc.

Deliveries Made 1 throughout the States of New Jersey and New York

45 CROSS STREET

PATERSON, N. J.

Telephone Sherwood 2-1284

ANTHONY RAGUCCI

FUNERAL DIRECTOR — EMBALMER

— Derma Surgeon —

323 GRAND STREET

PATERSON, N. J.

Telephone Sherwood 2-7144

Estate of

N. DE LUCCIA

FUNERAL DIRECTORS

— Unexcelled Service —

26 ELLISON STREET

PATERSON, N. J.

Telephone Sherwood 2-4161

P. MARROCCO & SON

FUNERAL HOME

37-41 MILL STREET

PATERSON, N. J.



THEATRICAL NEWS



Mickey Rooney In Garden Photoplay

Ronald Sinclair, Hollywood's new discovery in British boy actors is teamed with Judy Garland and Sophie Tucker, of "Broadway Melody" fame Mickey Rooney, and other notable players in "Thoroughbreds Don't Cry" new attraction now at the Gardenn Theatre.

Childhood friendships and loyalties in an intensely human story mingle with the thunder of racing hoofs, the excitement of the race track, and hidden intrigue of turfdom.

Much of the action was filmed at the famous Santa Anita race track where the racing events, the plot to "box" a competing jockey and such details were staged.

Sophie Tucker plays her second role on the screen as the kindly race track boarding housekeeper, and Judy Garland is her grand daughter.

"Portia on Trial" the latest photoplay to be adapted from a Fifth Baldwin story, is also at the Garden Theatre.

The role of Portia is one which should take its place among the film classics, and place Miss Inescort at the pinnacle of stardom.

"Submarine D-1" Opens At Fabian

The grandest submarine that ever took a crash dive, and swiftest crew that ever laughed in the face of danger, provide great entertainment in "Submarine D-1", starring Pat O'Brien, Wayne (Kid Galahad) Morris, George Brent, Frank McHugh and Doris Weston, opening tomorrow at the Fabian Theatre.

Here is depth bomb drama in torpedo fast action. You will see "Submarine D-1" rammed and sunk. You will see submarine vs. super dreadnaughts in thrilling naval maneuvers. You will see the sea going elevator sent to the ocean's bottom to rescue sunken submarines. You will see tons of smothering water pour in through the side of the crippled submarine.

Pat O'Brien is seen as a hard boiled officer of a two fisted crew. Wayne Morris is a wise cracking chin busting, heart breaking glib and George Brent is a gallant commanding officer, brave in danger, daring in action. Frank McHugh is a goofy glib, a sucker for dames and lottery tickets, and Doris Weston is the sweetheart of the submariners, as the main heartthrob of all men who go down to the sea in ships.

"Big Town Girl" is the co-feature on the same bill.



Christmas Seals
are here again!
They protect your home
from Tuberculosis

HUMAN ICICLE

Will Appear On Stage Of State Theater Jan. 3

The amazing spectacle of a woman frozen in ice in an attempt to break the record for such a feat will be presented on the stage of the State Theater on January 3.

At that time, "Annette" beautiful, daredevil human icicle, will be frozen in 1400 pounds of solid ice in full view of the audience in a try at breaking the world's record of 21 minutes and 40 seconds for human endurance of this sort.

Lombard Stars In Film At U. S.

"True Confession", starring Fred MacMurray, Carole Lombard, and John Barrymore will be presented in the U. S. Theatre beginning today with "Love on Toast" as the co-feature.

The tale of "True Confession" is that of a husband, played by Fred MacMurray, who'd rather be poor for the rest of his life than ever tell a lie, plus a wife whose chief

HUSBAND AND WIFE



Carole Lombard and Fred MacMurray in "True Confession" now showing at the U. S. Theatre in Paterson.

delight in life is thinking up new whoppers, enacted by Carole Lombard, as they get themselves into the year's most hilarious collection of laughs and mixups. John Barry-

Carlo Buti At Lazzara's Sunday!

Bing Crosby's Rival Sings Any Number Requested, Known to Have Broken Many Women's Hearts All Over the World—All-Around Program Arranged For Sunday One Of Season's Best

Carlo Buti, Italy's strongest rival for the combined honors of its own Nino Martini and America's Bing Crosby, comes to Lazzara's Music Hall, Cross and Ellison Streets, in Paterson, this Sunday and thereby hangs the tale of one of Paterson's most momentous occasions.

This Buti person is not the run of mine Italian singing stars. He has toured the world and has stopped the heartbeats of women in every land. He admitted, upon entering this country a few short months, that he was appearing in America solely upon the request of the "beautiful women of this country."

S. V. Casolaro, director of the company with which Buti appears, bills the performance as headlined by the "greatest singer in the world" and you are left no choice other than deducing he means Carlo Buti.

There will be two performances of the program, one at three o'clock in the afternoon, the other at eight o'clock. The entire program of music planned for Sunday is one of the finest ever assembled by Mr. Lazzara. Incidentally, it is well to remember that Mr. Lazzara has spared no expense in bringing the famed Buti to Paterson.

Those who patronize Lazzara's find the charming and pleasant greeting of Miss Eva Longo at the box office equivalent to a cheerful appetizer for the entree consisting of the grand programs at the theatre.

more plays the eccentric derelict whose blackmailing scheme threatens to break up the marriage of Carole Lombard and Fred MacMurray as he threatens to reveal the young wife's innocence. The honesty of her husband, played by MacMurray will not accept the entirely true story that she is innocent, and he agrees to defend her only after she "confesses" that she is guilty. What a story: What a riot!

"Love on Toast" is a mirth-quake of wit, which also plays on the same bill.

BUY CHRISTMAS SEALS

S. V. CASOLARO

Presenta il Più Grande Cantore del Mondo

CARLO BUTI

con la sua Compagnia al Completo Direttamente da Broadway

LAZZARA'S MUSIC HALL

Cross and Ellison Streets

Paterson, New Jersey

DOMENICA 26 DICEMBRE 1937

Due Grandiosi Spettacoli di Gala—Ore 3 P. M.—8 P. M.

Stafford Asks For Additional Fund Donations

A last minute appeal to Paterson's citizenry for contributions to the Christmas Spirit Fund was made yesterday by Mayor-Elect Bernard L. Stafford. He is treasurer of the fund.

More than 1,000 requests for Christmas baskets have been received at headquarters, 91 Broadway, Mr. Stafford declared, and in order to meet these requests, more funds and contributions are needed.

A total of \$2,500 has been contributed to date. Additional contributions can be sent to the fund treasurer at 45 Church street.

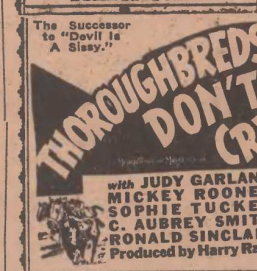
US MAIN ST. NOW

Paterson



with Grant Richards—Isabel Jewell

GARDEN : STARTS TODAY



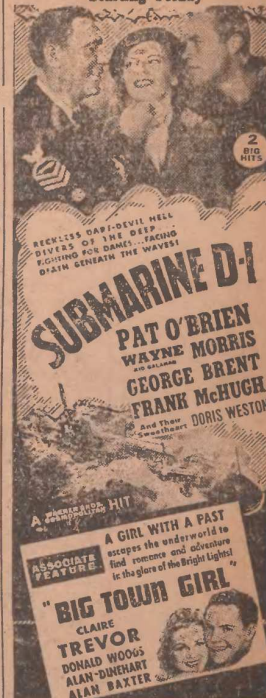
Clairvoyant

(continued)

Santa Claus will fill his stockings with the city engineer's job... and in line with the Yule spirit, Assemblywoman Nan V. Donohue sends Xmas greetings to the public via this column... and so do we... and we hope that there are enough political plums in Kris Kringle's sack to take care of all the boys... Merry Xmas!

FABIAN

Starting Friday



GARDEN : STARTS TODAY



STATE THEATRE

Matinee 10c and 15c

Evening 15c and 25c

Friday and Saturday Eve.

LUCKY—10 CASH PRIZES—PLUS BIG JACK POT

Friday and Saturday

"The Perfect Specimen" with Joan Blondell and Errol Flynn also

Joe E. Brown in "Fit For A King"

—EVERY SUNDAY MATINEE—ON THE STAGE—

"AMATEUR CONTEST"

Contest Open To Everyone

On the Screen Sunday and Monday

"Stage Door" with Katherine Hepburn - Ginger Rogers

also June Travis in "Over The Goal"