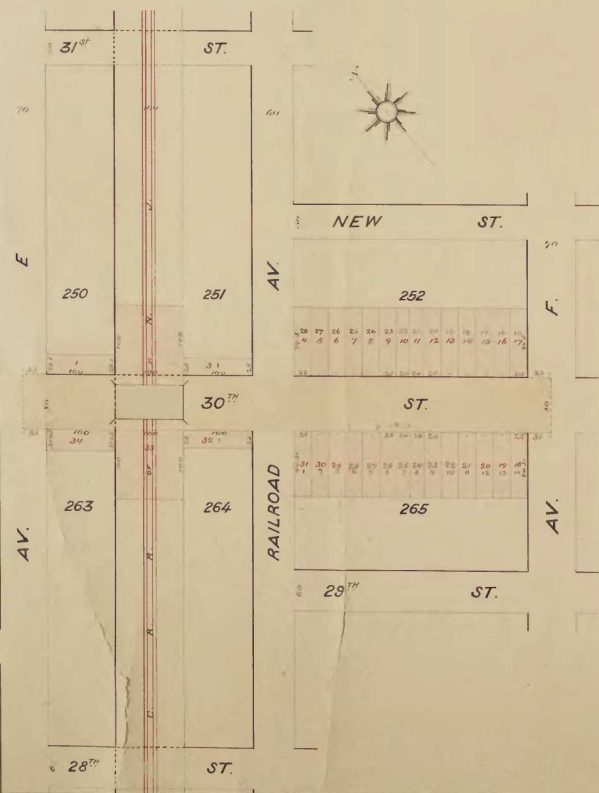


FINAL ASSESSMENT MAP For Regulating and Grading THIRTIETH STREET

From the Centre line of Avenue E.
To the Centre line of Avenue F.

Smith & Hildner
City Surveyors Scale, 100 feet
to one inch.

Filed July 13th 1880
W.C. Hamilton City Clerk.



Owners' Names	Block City Lot No.	Lot Number	Number of Feet Front.	Assessment for Incidentals	Assessment for Interest	Total Assessment
Geo. Bates	250	1	100	13 36	2 87	16 23
Central R.R. of N.J.		2	100	13 36	2 87	16 23
D.W. Oliver	251	3	100	13 36	2 87	16 23
Helsing	252	4	25	3 34	71	4 05
		5	25	3 34	71	4 05
F. I. Smith		6	25	3 34	71	4 05
		7	25	3 34	71	4 05
		8	25	3 34	71	4 05
		9	25	3 34	71	4 05
		10	25	3 34	71	4 05
D.W. Oliver		11	20	2 67	60	3 27
		12	25	3 34	71	4 05
		13	25	3 34	71	4 05
		14	25	3 34	71	4 05
		15	25	3 34	71	4 05
		16	25	3 34	71	4 05
		17	25	3 34	71	4 05
Jos. Williams	253	18	25	3 34	71	4 05
F. I. Smith		19	25	3 34	71	4 05
		20	25	3 34	71	4 05
		21	25	3 34	71	4 05
		22	25	3 34	71	4 05
		23	25	3 34	71	4 05
		24	20	2 67	60	3 27
J. K. Ireland		25	20	2 67	60	3 27
		26	25	3 34	71	4 05
		27	25	3 34	71	4 05
D.W. Oliver		28	25	3 34	71	4 05
		29	25	3 34	71	4 05
		30	25	3 34	71	4 05
		31	25	3 34	71	4 05
F. I. Smith	254	32	100	13 36	2 87	16 23
Central R.R. of N.J.		33	100	13 36	2 87	16 23
Geo. Bates	253	34	100	13 36	2 87	16 23
Total				171 00	36 66	207 66

Cost of Improvement.	
Printing, posting notices &c.	20 00
Commissioners' fees	30 00
Surveyors' fees	36 75
	86 75
Cost of preliminary assessment	84 25
Total incidentals	171 00
Interest on cost of preliminary assess- ment from July 1 st 1880 to July 1 st 1880	36 66
Total cost of improvement	207 66

This is to certify that on the undersigned, Commissioners appointed by the City Council to make a final map and assessment of the cost of Regulating and grading Thirtieth Street from the Centre line of Avenue E to the Centre line of Avenue F, have made said map and assessment as aforesaid as shown on the within map and assessment list.

Jasper Cadmus
Robert H. Elwood
 Commissioners
John Swaney