

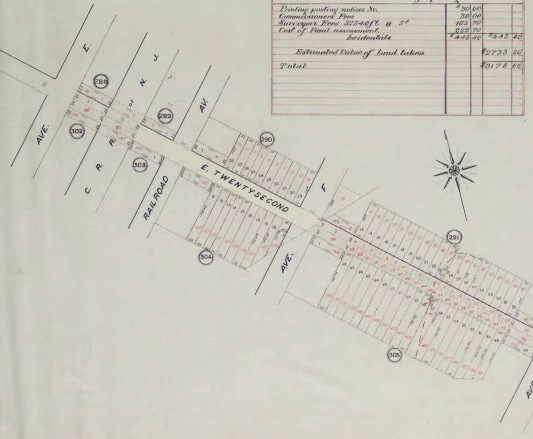
# PRELIMINARY ASSESSMENT MAP FOR THE OPENING OF EAST TWENTYSECOND ST.

Between the easterly side of Avenue E  
and the westerly side of Avenue I

SCALE 100 FEET TO ONE INCH

Attest *John W. Lewis*  
City Clerk

Estimated Cost of Opening	
Printing posting notices No.	\$50.00
Construction Plans	50.00
Surveyors Fee Staff & St	100.00
Cost of land assessments	1,832.50
Estimated Value of land taken	\$273.00
Total	\$2,355.50



Owners Names	Number of Feet Front	Number of Square Feet Taken	Awards		Assessments			Balances	
			Fee	Fee Special	Fee	Fee Special	Fee	Fee Special	
L. A. ...	10.0	200.0	...	...	...	...	...	...	
M. ...	10.0	200.0	...	...	...	...	...	...	
N. ...	10.0	200.0	...	...	...	...	...	...	
O. ...	10.0	200.0	...	...	...	...	...	...	
P. ...	10.0	200.0	...	...	...	...	...	...	
Q. ...	10.0	200.0	...	...	...	...	...	...	
R. ...	10.0	200.0	...	...	...	...	...	...	
S. ...	10.0	200.0	...	...	...	...	...	...	
T. ...	10.0	200.0	...	...	...	...	...	...	
U. ...	10.0	200.0	...	...	...	...	...	...	
V. ...	10.0	200.0	...	...	...	...	...	...	
W. ...	10.0	200.0	...	...	...	...	...	...	
X. ...	10.0	200.0	...	...	...	...	...	...	
Y. ...	10.0	200.0	...	...	...	...	...	...	
Z. ...	10.0	200.0	...	...	...	...	...	...	
<b>Total</b>	<b>100.0</b>	<b>2000.0</b>	<b>...</b>	<b>...</b>	<b>...</b>	<b>...</b>	<b>...</b>	<b>...</b>	

Owners Names	Number of Feet Front	Number of Square Feet Taken	Awards		Assessments			Balances	
			Fee	Fee Special	Fee	Fee Special	Fee	Fee Special	
L. ...	10.0	200.0	...	...	...	...	...	...	
M. ...	10.0	200.0	...	...	...	...	...	...	
N. ...	10.0	200.0	...	...	...	...	...	...	
O. ...	10.0	200.0	...	...	...	...	...	...	
P. ...	10.0	200.0	...	...	...	...	...	...	
Q. ...	10.0	200.0	...	...	...	...	...	...	
R. ...	10.0	200.0	...	...	...	...	...	...	
S. ...	10.0	200.0	...	...	...	...	...	...	
T. ...	10.0	200.0	...	...	...	...	...	...	
U. ...	10.0	200.0	...	...	...	...	...	...	
V. ...	10.0	200.0	...	...	...	...	...	...	
W. ...	10.0	200.0	...	...	...	...	...	...	
X. ...	10.0	200.0	...	...	...	...	...	...	
Y. ...	10.0	200.0	...	...	...	...	...	...	
Z. ...	10.0	200.0	...	...	...	...	...	...	
<b>Total</b>	<b>100.0</b>	<b>2000.0</b>	<b>...</b>	<b>...</b>	<b>...</b>	<b>...</b>	<b>...</b>	<b>...</b>	

This is to certify that the foregoing awards, awards approved by the City Council to open East Twentysecond Street between the westerly side of Avenue E and the westerly side of Avenue I and under a map of said improvement and assessment for lands taken, damages awarded, benefits received, and costs and expenses incurred in opening said street, have been made and assessed as appears on shown on within map and assessment list.

*Alvin H. Allen*  
*Alvin H. Allen*  
Commissioners  
*Alvin H. Allen*

This is to certify that I the undersigned City Surveyor to whom was referred the instance in open East Twentysecond Street between the westerly side of Avenue E and the westerly side of Avenue I have made within map for said opening.

City Surveyor - *Conrad Smith*