

ASSESSMENT MAP

FOR THE OPENING AND GRADING OF

ORIENT STREET

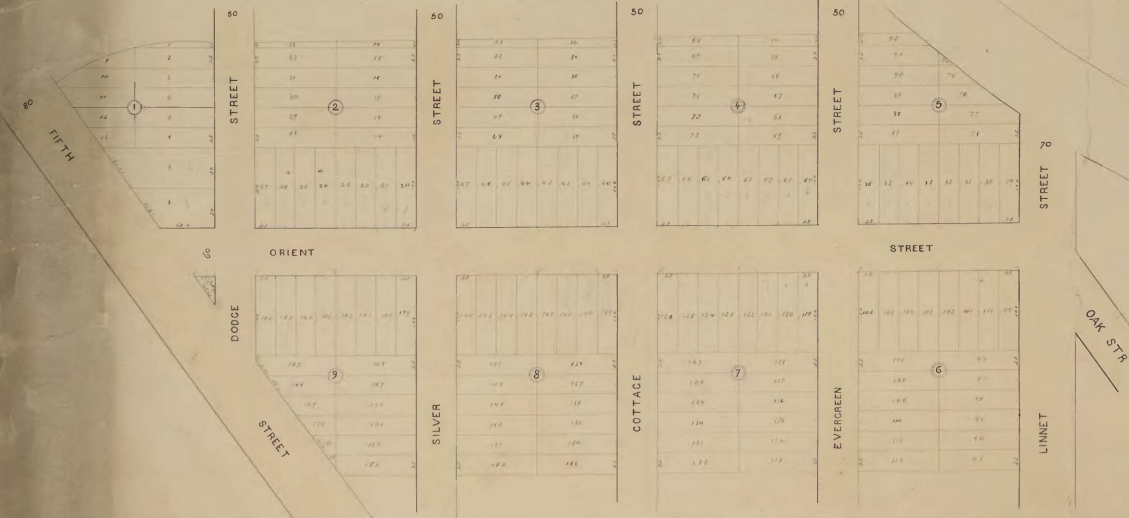
FROM FIFTH STR TO LINNET STR

APRIL 1870

SCALE 60 FEET TO ONE INCH.

OWNERS NAMES.	BLOCKS	LOT IN	N ^o FEET FRONT	N ^o SOI FEET TAKEN	VALUE OF LAND TAKEN	DAMAGES SUSTAINED	BENEFITS RECEIVED	DAMAGES TO BE PAID BY	INCIDENTAL EXPENSES	TOTAL AMOUNT OF DAMAGES TO BE PAID BY	TOTAL AMOUNT OF BENEFITS TO BE RECEIVED BY	YARDS EXCAVATION	YARDS FILLING	GRADING	INTERSECTIONS	INCIDENTALS	TOTAL FOR GRADING
Deputy Notary	1	1	62.0						73.6								73.6
J. W. H. Co.	1	2										6.6	17.0	6.0	1.75	5.0	32.35
...
Total									10.60			67.5	77.5	18.2	26.30	10.00	67.50

INCIDENTAL EXPENSES	
Printing - Posting notices to	60 cc
Commissioner Fees	60 cc
Class Fee	24 cc
Bill of Month & Day	7 ⁰⁰ 60
Total	\$195.60



CERTIFICATE

This is to Certify that the undersigned Commissioners appointed by the Common Council to open Orient Street and make a map of said improvement and assessment for said plan, benefit assessed damages sustained to lots and expenses incurred in opening said Street and make an assessment as returned as shown on within map and assess same as follows.

J. S. Branchell
 W. Van De Kerk
 J. W. Hussey

Received this
 April 20th 1870
 J. S. Branchell