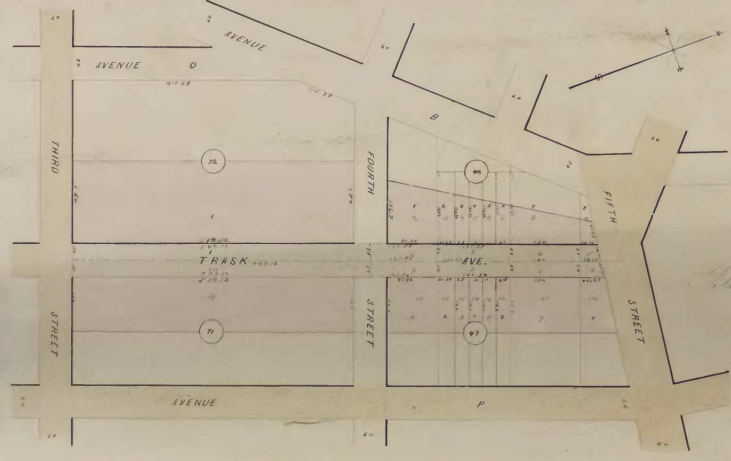


OWNERS NAMES	LOT	AREA	AV. FEET FRONT	N. OF SQ. FT. TAKEN	VALUE OF LAND TAKEN	DAMAGES SUSTAINED	BENEFITS RECEIVED	ALLEGEDLY FOR SPECIAL DAMAGES	INCIDENTALS	TOTAL AMOUNT PAID BY DAMAGE & BENEFIT EXPENSE & BENEFIT LESS EXPENSE OF DAMAGES
David B. Powell	33	1	42.12	1678.60	32.99 72		32.99 72		1.89 6	31.10 16
David B. Powell	33	1	91.88	3699.50	72.9 76		72.9 76		9.43	63.54 76
Arthur C. Barrett	34	2	141.88	5787.20	115.74 8		115.74 8		6.09	109.65 79
James	3	2	180.00	7200.00	144.00 0		144.00 0		6.00	138.00 0
James	4	2	44.72	1788.80	35.77 6		35.77 6		1.91	33.86 6
James	5	2	44.72	1788.80	35.77 6		35.77 6		1.91	33.86 6
John W. Crawford	35	1	130.00	5200.00	104.00 0		104.00 0		6.00	98.00 0
David B. Powell	36	1	91.88	3699.50	72.9 76		72.9 76		9.43	63.54 76
David B. Powell	36	1	42.12	1678.60	32.99 72		32.99 72		1.89 6	31.10 16
			1822.12	53262.70	11652.54		11652.54		84.18	11568.36

EXPENSE TABLE	
Printing, Postage, etc.	25 00
Commissioners Fee	30 00
Mill of Smith & Kelly, 527 1/2 St. W.	29 13
Interest	84 13
Value of Land Taken	11652 54
Special Damages	Total
	11732 67

This is to certify that the undersigned Commissioners appointed by the City Council to open Trask Ave. and make a map of said improvement and assessment for lands taken damages sustained, benefits received and costs and expenses incurred in opening said Ave. have made such assessment as is expressed as shown on the within map and assessment list.

McLaughlin
H. B. Van Horn
Geo. H. Sanford } COMMISSIONERS



FINAL ASSESSMENT MAP

FOR THE OPENING OF

TRASK AVENUE

FROM

THIRD TO FIFTH STREET

Smith & Egan
CITY SURVEYORS

Scale: 1/4" = 100'
To Cont. Inca.