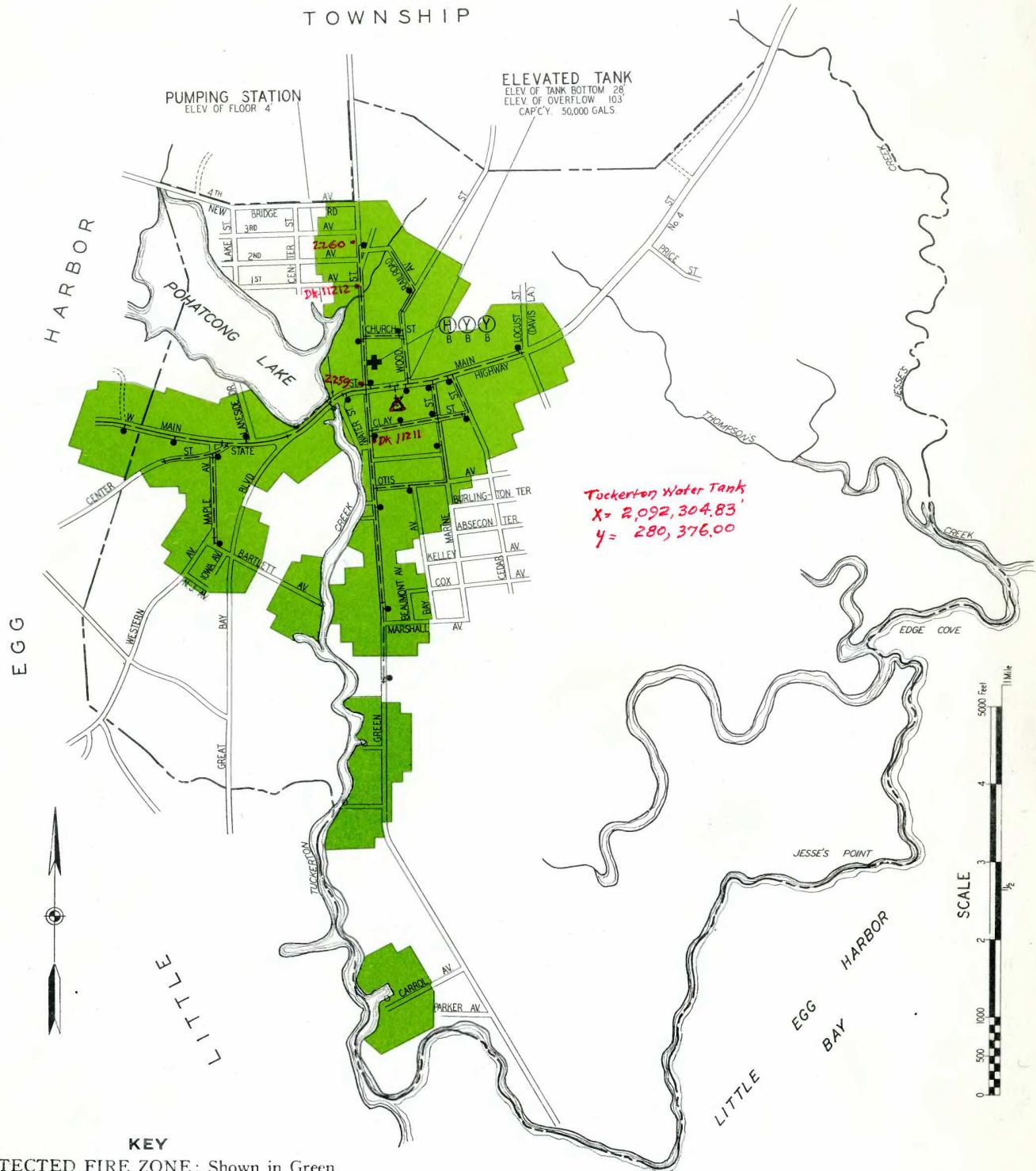


Superseding Map No. 44 of March 30, 1940. Please destroy old issue.



**KEY**

PROTECTED FIRE ZONE: Shown in Green.

NOTE.—Fire protection report on file in Engineering Department of F. I. R. O. of N. J.

Elevations range from 0 to 24 feet above mean sea level.

Water mains 8 inches and larger in diameter

Water mains 6 inches in diameter

Water mains 4 inches in diameter

Fire hydrants shown thus

Gate valves shown thus

Fire house shown thus

Fire apparatus designated by symbols thus:

- (Y) Pumping engine and hose car
- (H) Hose car
- (O) Booster tank or tanks on above



THE FIRE INSURANCE RATING ORGANIZATION OF N. J.  
ENGINEERING DEPARTMENT  
NEWARK 2, N. J.

**Tuckerton Borough**  
**Ocean County, New Jersey**

NOVEMBER 15, 1952