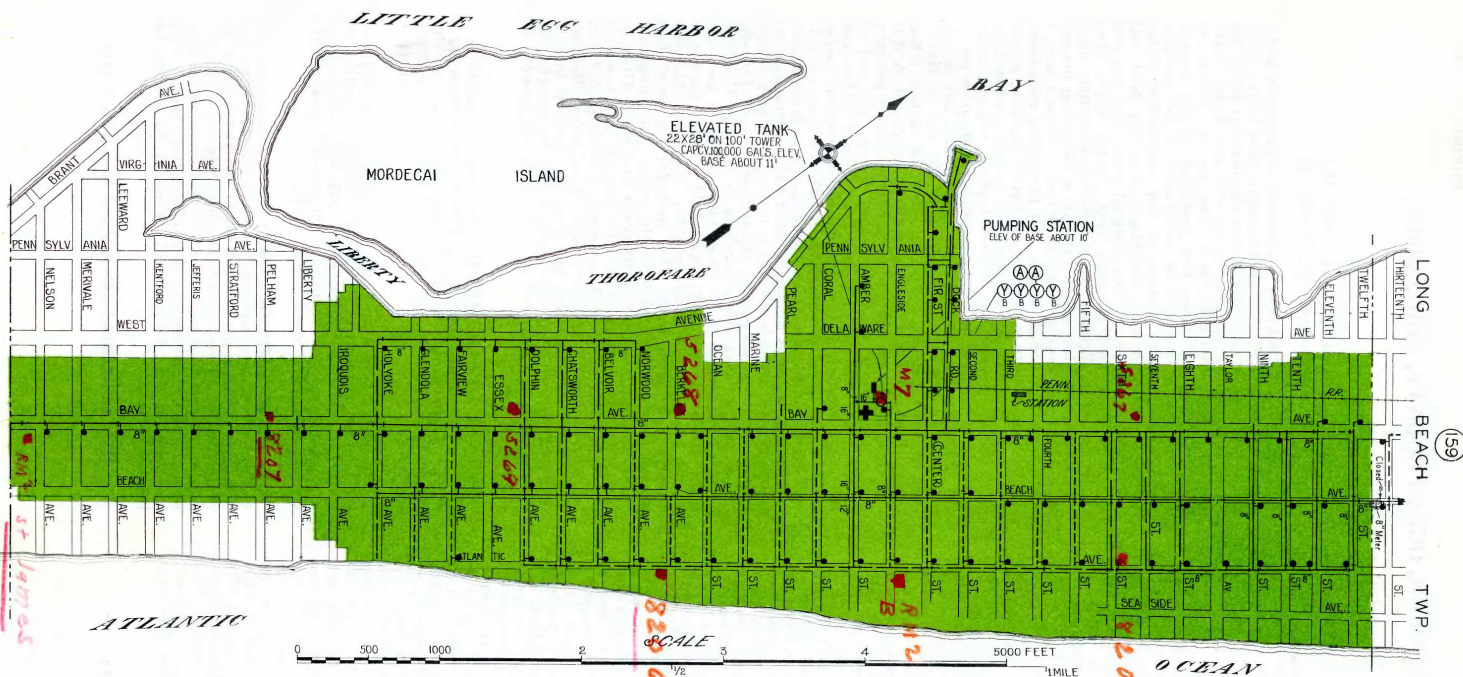


BEACH HAVEN (423) HEIGHTS



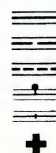
THE FIRE INSURANCE RATING
ORGANIZATION OF N. J.
ENGINEERING DEPARTMENT
NEWARK 2, N. J.

Beach Haven Borough **Ocean County, New Jersey**

FEBRUARY 28, 1949

KEY

- PROTECTED FIRE ZONE:** Shown in Green.
NOTE.—For description of fire protection, etc., see other side.
 Elevations range from 0 to 23 feet above mean sea level.
 Water mains 8 inches and larger in diameter
 Water mains 6 inches in diameter
 Water mains 4 inches in diameter
 Fire hydrants shown thus
 Gate valves shown thus
 Fire house shown thus
 Fire apparatus designated by symbols thus:
 (Y) Pumping engine and hose car
 (A) Ambulance, Squad or Auxiliary car
 (B) Booster tank or tanks on above



underscored blue for new establishments

BEACH HAVEN BOROUGH, OCEAN COUNTY, NEW JERSEY.

Population—1940 Census—746.

IN GENERAL: Located at the southern end of Long Beach Island, a narrow strip lying between the Atlantic Ocean and Little Egg Harbor Bay and Manahawkin Bay, about 3 miles from the mainland. It is a summer resort with 3 industries employing about 35 to 40. Area about 0.77 square miles; elevations range from 0 to 23 feet. Streets are mainly of gravel in good condition. High winds and high tides occur occasionally.

WATER SUPPLY: Water works, originally installed in 1893 and subsequently rebuilt, is owned and operated by the borough, supplying water for domestic and fire protection purposes to the borough only. **Organization:** Department is under control of the borough council and under the supervision of superintendent appointed in 1931. He is also in charge of sewer system. He has 2 regular employees, 2 laborers and other help as needed. One truck is provided. Pipe yard is at pumping station. Consulting engineer is employed. Records are fair. Employee responds to alarms of fire prepared to render emergency aid. **Supply Works:** Supply is obtained from two wells, one 10 inches in diameter, 668 feet deep and yielding about 1,350 g.p.m. and one 10 inches in diameter, 672 feet deep and yielding about 1,500 g.p.m. Wells are equipped with deep well pumps and discharge to a covered concrete 580,000-gallon suction reservoir located near pumping station. There is a closed 8-inch metered emergency connection with the Long Beach Township distribution system. **Pumping Station:** Located at Bay Avenue and South Street, is of concrete construction with stove for heat and electric lights. No exposure. Elevation of pump room floor about 10 feet. **Equipment—High Lift Pumps:** One 1-m.g.d. Fairbanks-Morse centrifugal pump driven by a 50-h.p. Fairbanks-Morse electric motor and a 6-cylinder Continental gasoline engine for emergency use. Two 0.5-m.g.d. Midwest centrifugal pumps each driven by a 25-h.p. G. E. electric motor. **Low Lift Pumps:** One 0.86-m.g.d. Fairbanks-Morse pump driven by a 25-h.p. electric motor and one 1.15-m.g.d. Peerless pump driven by a 35-h.p. electric motor or a 60-h.p. Continental gasoline engine. Low lift pumps discharge to reservoir. High lift pumps discharge through one of two 0.5-m.g.d. Diding pressure filters housed in a frame building near borough hall. Piping is arranged so that filters can be by-passed. **Distribution System:** In one service; see map. Arteries consist of 16-inch, 12-inch, and 8-inch mains. Gridiron is fairly complete. **Elevated Tank:** Located at station on 100-foot steel tower with base at about elevation 11 feet; tank 22 feet in diameter and 28 feet high, capacity 100,000 gallons. **Consumption:** The average and maximum daily consumption for 1947 as measured by Venturi meter was .396 and .85 m.g.d. There are 963 services, 13 of which are metered. **Pipe:** Cast iron, tar coated, bell and spigot joint and cement pipe, laid with 2-foot to 4-foot cover. About 10% is cement pipe. No trouble from frozen mains or electrolysis. Total length 48,708 feet; 24.1% 4-inch, 34.5% 6-inch, and 41.4% 8-inch. **Gate Valves:** There are 149 of various makes with valve boxes set at grade. All open in same direction. They are said to be inspected twice yearly. Fire department is notified when valves affecting hydrant supply are operated. **Hydrants:** There are 113 hydrants of various makes mainly of Corey, Ludlow, and Mathews; 88 have two 2½-inch and one 4½-inch outlets, 5-inch barrels, and gated branches. Balance have two 2½-inch outlets and ungated branches. They are inspected after use and twice annually. Those operated at time of inspection were in good condition. **Pressures:** Readings taken at 4 hydrants showed pressures ranging from 55 to 56 pounds with an average of 56 pounds. **Fire Flow Tests:** Probable supply available for fire protection purposes was measured on September 28, 1928 by means of Pitot tube. Location of hydrant, discharge in gallons per minute, pressure before flow, and pressure during flow were as follows:

Bay Ave. and Second St., 1,000—56—48.

Atlantic Ave. and Center St., 1,180—56—53.

Bay Ave. and Merivale Ave., 840—55—31.

Bay Ave. and Eleventh St., 780—56—51.

FIRE DEPARTMENT: A volunteer organization under partial control of the borough. Company owns house, apparatus, and equipment. The borough appropriated \$3,000 for maintenance of the department in 1948 and Long Beach Township appropriated \$1,500 for fire service. Officers are elected for one year terms and confirmed by the council. The total membership is 35, of whom about 26 are available at all times. **Company:** Located at Bay Avenue and Amber Street as shown on map. Building is a 2-story brick and frame structure with asbestos shingled wood roof, concrete apparatus floor, oil-fired steam heat, electric lights, telephone, and siren. **Equipment:** A 1936 Hale 600-g.p.m. triple combination pumping engine carrying a 150-gallon booster tank, 150 feet of booster hose, 1,500 feet of 2½-inch hose, 2 short ladders, 1 deluge nozzle, and fair minor equipment. A 1927 Hale 500-g.p.m. triple combination pumping engine carrying a 70-gallon booster tank, 250 feet of booster hose, 1,500 feet of 2½-inch hose, 2 short ladders, and fair minor equipment. A 1927 Hale 350-g.p.m. triple combination pumping engine carrying a 140-gallon booster tank, 200 feet of booster hose, 750 feet of 1½-inch hose, 500 feet of 2½-inch hose, 2 short ladders, a 35-foot extension ladder, 2 gas masks, 2 salvage covers, and good minor equipment. A 1947 American La France 750-g.p.m. triple combination pumping engine carrying a 150-gallon booster tank, 150 feet of booster hose, 1,200 feet of 2½-inch hose, 2 short ladders, and fair minor equipment. One Buick and one Cadillac ambulance with good equipment. **Hose:** All 2½-inch hose is C.R.L. with National Standard screw couplings. Hose is sometimes dried after use, but is usually replaced wet if a large amount has been used. There is 300 feet in reserve. It is tested twice annually at 150 to 200 pounds. **Operations:** Governed mostly by company by-laws with supervision by borough. Chief has control of apparatus at all times and of men at fires and drills. **Drills and Training:** Drills held monthly consist of laying hose, making and breaking couplings, handling streams, and ladder work. **Fire Methods:** For small fires booster lines are used reinforced by engine lines. Engine is always connected to hydrant. **Response to Alarms:** All apparatus responds to alarms within the borough and one piece responds to alarms from Long Beach Township. Aid may be received from Ship Bottom and Manahawkin. **Building Inspection:** None. **Records and Reports:** Records kept of fires and response. Report is made yearly to council. **Fire Alarms:** Alarms telephoned to police desk and sounded on siren at fire station.

POLICE DEPARTMENT: Department consists of a chief and three uniformed police officers, one of whom is on duty at all times. An automobile is provided with two-way radio. Building violations are reported to the building inspector.

BUILDING LAWS: Code adopted May 18, 1931 provides for appointment of a competent building inspector and contains provisions for fire stops, wall thicknesses, chimneys, and private fire protection, but contains no fire limits nor does it prohibit wood shingle roofs.

FIRE PREVENTION LAWS: Code contains some provisions for garages and motion picture booths and machines. Regulations are not sufficiently complete from a fire protection standpoint. State laws adequately cover the storage and shipment of explosives, the transportation of flammables, and the construction of motion picture booths. They also restrict the discharge of fireworks to responsible bonded parties.

ZONING ORDINANCE: Adopted November 7, 1947.