

6" Emergency Conn.

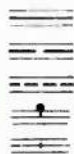
SCALE



1/2 MILE

KEY

- PROTECTED FIRE ZONE: Shown in Green.
- NOTE.—Fire protection report on file in Engineering Department of F. I. R. O. of N. J.
- Elevations range from 0 to 20 feet above mean sea level.
- Water mains 8 inches and larger in diameter
- Water mains 6 inches in diameter
- Water mains 4 inches in diameter
- Fire hydrants shown thus
- Gate valves shown thus



THE FIRE INSURANCE RATING ORGANIZATION OF N. J.
ENGINEERING DEPARTMENT
NEWARK 2, N. J.

**West Collingswood Ext.
Haddon Township
Fire District No. 2
Camden County, New Jersey**

JUNE 30, 1951

June 30, 1939.

WEST COLLINGSWOOD EXTENSION, HADDON TOWNSHIP, CAMDEN COUNTY, N. J.

Fire District No. 2.

Population estimated to be 1,500.

IN GENERAL: Located on the Black Horse Pike and Crescent Boulevard along the Atlantic City Branch of the Pennsylvania Railroad adjoining the southerly limits of Camden and the westerly limits of Collingswood. It is a suburban community with a small business area, two large garages and no manufacturing. Area about 0.23 square miles. Elevations range from 10 to 20 feet. Main thoroughfares are concrete in good condition and other streets are improved in fair to good condition. Railroad crossings at grade and traffic congestion on the through highways afford possible delays to the response of fire apparatus from the neighboring communities.

WATER SUPPLY: Water for domestic and fire protection purposes is furnished by the Borough of Collingswood which owns supply works, distribution system and appurtenances. The system in West Collingswood Extension is supplied as an extension of the Collingswood system through a 6-inch and 8-inch connection at the municipal limits. There is also a 6-inch normally closed emergency connection to the Camden distribution system at the Black Horse Pike and Grant Avenue. For a detailed description of Collingswood supply works, pumping station, reservoirs and organizations, see report on Collingswood with map No. 57. **Consumption:** The average and maximum daily consumption during 1938 in the entire territory served including water sold at wholesale to Haddon Township was 1.745 and 2.542 million gallons. Of this amount a daily rate of 230,000 gallons was sold to Haddon Township. On December 31, 1938, there were 4,650 services in the entire territory served exclusive of those in Haddon Township supplied under wholesale rates of which 440 were in the West Collingswood Extension section of Haddon Township. Services are 100% metered. **Distribution System:** In one service consisting of incomplete 4- and 6-inch gridiron. See map and description above. **Pipe:** All cast iron, tar coated, bell and spigot joint, laid with 3-foot cover. Total length of pipe in West Collingswood Extension proper, 13,550 feet; 1.5% 8-inch, 64.2% 6-inch, 34.3% 4-inch. No serious trouble reported from frozen mains or electrolysis. **Gate Valves:** There are 12 within the municipal limits of R. D. Wood and Darling makes, set with valve boxes at grade. Direction of operation is uniform. Inspection is limited to that necessitated by routine system maintenance. **Hydrants:** There are 15 within the district limits of Darling make. Practically all have two 2½-inch and one 4½-inch outlets, 4-inch

valve openings and 4- or 6-inch gated branches. Hydrants are inspected at least twice annually by the Collingswood Water Department and were found to be in good condition at time of inspection. **Pressures:** A pressure recording gauge in the water department office in Collingswood at about elevation 35 shows pressures to be fairly well maintained at about 50 to 55 pounds. Readings taken at two hydrants showed pressures ranging from 52 to 58 pounds with an average of 55 pounds. **Fire Flow Tests:** Probable supply available for fire protection purposes was measured on March 21, 1939 by means of Pitot tube. Location of hydrant, discharge in gallons per minute, pressure before flow and pressure during flow were as follows:

Collings Ave. west of Lynne Ave., 535—52—23.

Walnut and Calvert Aves., 225—58—6.

FIRE DEPARTMENT: No fire department within this district. The township fire department located on Center Street, Westmont, Map No. 58, about two miles distant responds to all alarms in this district with one 1,000-g.p.m. engine company. In addition, one of the Collingswood fire companies, at a distance of about one-half mile, affords mutual response to this territory. **Fire Alarms:** Alarms of fire are telephoned through the Collingswood exchange to the fire stations and are sounded on electric sirens.

POLICE DEPARTMENT: The township police department consists of a chief and seven men working in eight-hour shifts, with desk watch maintained at all times.

BUILDING LAWS: Building code adopted April 22, 1930 provides for the annual appointment of building inspectors and includes some general construction requirements, but does not establish fire limits nor does it prohibit combustible roof coverings. Some restrictions relating to public garages have been adopted by supplementary ordinance. In general the regulations are not sufficiently comprehensive from a fire protection standpoint.

EXPLOSIVES AND FLAMMABLES: Municipal regulations are limited to a garage ordinance and the state laws adequately cover the storage and shipment of explosives, regulate the construction of motion picture booths and restrict the use of fireworks to responsible bonded parties.