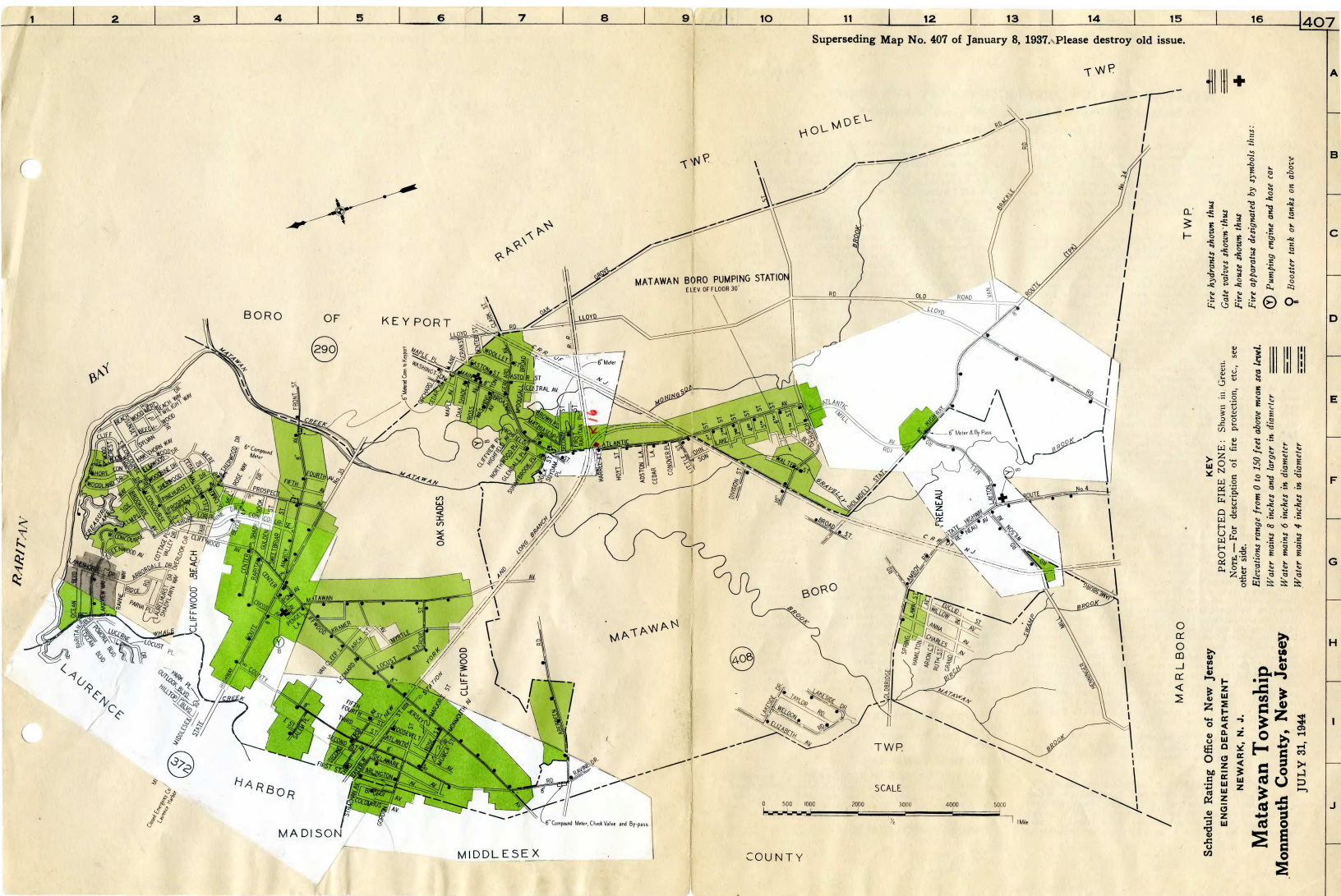


Superseding Map No. 407 of January 8, 1937. Please destroy old issue.



Fire hydrants shown thus
Gate valves shown thus
Fire houses shown thus
Fire apparatus designated by symbols thus:
Pumping engine and hose car
Booster tank or tanks on above

KEY
PROTECTED FIRE ZONE: Shown in Green
Note: For description of fire protection, etc., see other side.
Elevations range from 0 to 150 feet above mean sea level.
Water mains 8 inches and larger in diameter
Water mains 6 inches in diameter
Water mains 4 inches in diameter

Schedule Rating Office of New Jersey
ENGINEERING DEPARTMENT
NEWARK, N. J.
Matawan Township
Monmouth County, New Jersey
JULY 31, 1944

July 31, 1944.

MATAWAN TOWNSHIP, MONMOUTH COUNTY, NEW JERSEY.

Including Cliffwood, Cliffwood Beach, and Oak Shades.

Population — Census of 1940 — 2,633.

IN GENERAL: A farming section and seashore development located on Raritan Bay and the N. Y. & L. B. R. R. There are a few industries employing about 600. Area 2.85 square miles. Elevations range from 0 to 150 feet. Transportation to neighboring communities is afforded by railroad and bus lines. Main roads concrete, others gravel in fair to poor condition. Railroad crossings at grade are reported as not having interfered with the response of fire apparatus.

WATER SUPPLY: Water for domestic and fire protection purposes is supplied mainly by Keyport through two 6-inch metered connections, one on Main Street near Maple Avenue in the Oak Shades section and the other on Amboy Avenue near Matawan Creek. The township sells water to the Cliffwood Beach Company, who owns the distribution system in the Cliffwood Beach Section, through a 6-inch metered connection in Prospect Avenue near Amboy Avenue. Two small sections of the township (about 150 services) are supplied by extensions of the Matawan Borough distribution system. For information on the Keyport system see report with Map No. 290, on the Matawan Borough system see report with Map No. 408. **Municipal System:** This distribution system serving the Oak Shades and Cliffwood Sections is owned by Matawan Township. It is in charge of the road supervisor who maintains system with outside help as needed. Taps are made by a local plumber. Records consist of a distribution map only. **Consumption:** The average daily consumption on the municipal system during 1943 was 0.014 million gallons. There are approximately 200 unmetered services. **Cliffwood Beach Company System:** This system is maintained by an employee of the Cliffwood Beach Company, Inc. **Consumption:** The average daily consumption on the Cliffwood Beach Company system during 1943 was 0.077 million gallons. There are 558 unmetered services. There is a 6-inch closed emergency connection to the Laurence Harbor distribution system. **Distribution Systems:** See map and description above. **Pipe:** All cast iron, tar coated bell and spigot joint, laid with a 3-foot to 4-foot cover. No trouble reported from frozen mains or electrolysis. Total length in the township system 30,300 feet; 45.0% 8-inch and 55.0% 6-inch. Total length in the Cliffwood Beach system, 15,300 feet; 13.0% 8-inch, 70.0% 6-inch and 17.0% 4-inch. Total length on the Matawan Borough extensions within the limits of Matawan Township 6,000 feet of 6-inch. **Gate Valves:** There are 41 of various makes on all systems, set in iron boxes at or near grade. No regular inspection. **Hydrants:** There are 57 on the township system of Mathews make of standard type with 6-inch barrel, one 4½-inch outlet and two 2½-inch outlets and 6-inch gated branches. On the Cliffwood Beach system there are 12 of Eddy make with 4-inch barrels, one 4½-inch outlet and two 2½-inch outlets and 4-inch gated branches. On the Matawan Borough system there are 11 of Ludlow make of standard type with 6-inch barrels, one 4½-inch and two 2½-inch outlets and 6-inch gated branches. All hydrant outlets are National Standard. There has been no regular inspection of hydrants on the township system, and the Cliffwood Beach hydrants were in poor condition. **Fire Flow Tests:** Probable supply available for fire protection purposes was measured on May 3, 1944 by means of Pitot tube. Location of hydrant, discharge in gallons per minute, pressure before flow and pressure during flow were as follows:

Amboy Ave. at State Highway No. 35, 710—47—10.
Cliffwood Ave. 500 ft. N. E. of County Rd.—170—17—*.
Rear of Bungalettes near Lakeside Dr., 690—60—10.
*No reading taken.

FIRE DEPARTMENT: A volunteer organization of about 20 active members divided into 2 companies including a chief and in each company a first and second assistant chief, a foreman, and an assistant foreman. Chief is elected annually by companies and confirmed by township committee. About 6 members in each company are available at

all times. The township appropriated \$1,800 for the support of the department during 1944. An additional \$50 was appropriated for the Freneau Department which is located in Matawan Borough, but answers alarms in its vicinity in both the township and the borough. **Companies—Oak Shades Hose and Chemical Company No. 1:** Membership 8 active members. Located on Main Street near Cross Avenue. Building is a 1-story frame structure with a wood shingle roof, wood apparatus floor, electric lights, coal stove for heat, and siren. **Equipment:** One 1933 Pirsch-Schact 500-g.p.m. triple combination pumping engine carrying a 350-gallon booster tank, 200 feet of booster hose, 700 feet of 2½-inch hose, 2 short ladders, and a small amount of minor equipment. **Cliffwood Volunteer Fire Company No. 1:** Membership 12 active members. Located on Center Avenue near Pengel Street. Building is a 1-story brick structure with composition covered wood roof, wood apparatus floor, electric lights, hot air heat, and siren. **Equipment:** A 1941 Mack 500-g.p.m. triple combination pumping engine carrying a 300-gallon booster tank, 200 feet of booster hose, 500 feet of 2½-inch hose, 2 short ladders, and fair minor equipment. **Freneau Independent Fire Company:** Membership 27, of whom about 10 members are available at all times. This company was formerly located in the township limits, but is now located within the limits of the Borough of Matawan. It is entirely independent and answers fire alarms in both the township and the borough in its immediate vicinity. Located on State Highway No. 4 near Layton Mill Road. Building is a 1-story frame structure with composition covered wood roof, wood apparatus floor, coal stove for heat, siren, and electric lights. **Equipment:** A 1927 Sanford 500-g.p.m. triple combination pumping engine carrying a 40-gallon booster tank, 150 feet of booster hose, 500 feet of 2½-inch hose, 2 short ladders and poor minor equipment. **Hose:** All 2½-inch hose is C.R.L. with National Standard screw couplings and is all carried on apparatus. It is tested occasionally at 150 pounds pressure, shifted only at fires and drills, and dried on apparatus floor. All hose is over 5 years old. **Operations:** Companies are governed by township ordinance. Chief has full control of men at fires and drills and of apparatus at all times. He may prefer charges to company president and action on charges may be taken by township committee. Motors started occasionally. Four men in each company are appointed as drivers. **Drills and Training:** Drills, held about 12 times each year under the direction of the chief, consist of hose laying, pump operation, and use of equipment. **Fire Methods:** Booster streams used on small fires reinforced by engine lines with shut-off nozzles. Engine does not always hook up. **Response to Alarms:** Each company responds to alarms in its own area unless both companies are needed. Aid may be secured from Matawan Borough and Keyport under the Monmouth County cover-up system. **Building Inspection:** No inspections are made by the fire department. **Records and Reports:** Records kept of each fire consist of location, time, and amount of damage. Annual reports are made to the township committee. **Fire Alarms:** Alarms of fire are telephoned through the Keyport Exchange to the County Police Radio Station at Freehold and relayed by radio to the Matawan Township police who sound sirens on fire houses.

POLICE DEPARTMENT: There are 3 paid men who work in 8-hour shifts. A volunteer chief is appointed annually by township committee. A radio equipped car is provided.

BUILDING LAWS: None.

EXPLOSIVES AND FLAMMABLES: No municipal regulations. State laws adequately cover the storage and shipment of explosives and flammables and the construction of motion picture booths. They also restrict the discharge of fireworks to responsible bonded parties.

ZONING ORDINANCE: None.