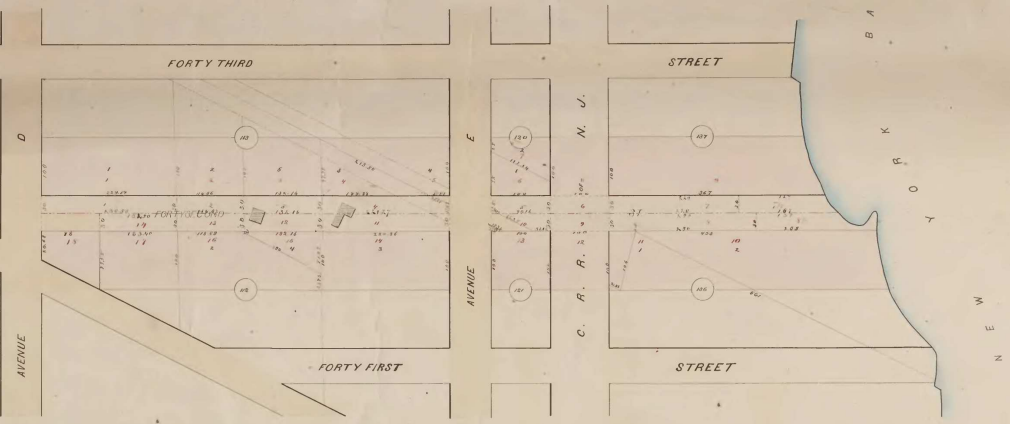


This is to certify that the undersigned commissioners appointed by the City Council in open public session on the 1st day of June 1888, have made a map of said improvement and assessed the same for taxes taken. Receipts received. Damages sustained and costs and expenses incurred in opening and laying out said street and assessment as represented upon a plan and assessment list.

Wm. Jennings
Wm. C. Tracy
Geo. W. Sanford } COMMISSIONERS

EXPENSE TABLE.

| | |
|---|------------------|
| Printing Advertising &c | 1,500 |
| Commissioners fees | 3,000 |
| Rating Streets Law 10% per c. w. variations | 96.74 |
| Value of land taken | 13,898.60 |
| Special Damages | 108.87 |
| Total | 19,794.11 |



FINAL

ASSESSMENT MAP

FOR THE OPENING OF

FORTY SECOND ST.

FROM

NEW YORK BAY, TO AVENUE D.

Scale of feet to one inch.

Scale of feet to one inch.

| OWNERS NAMES | STREETS | FRONT | DEPTH | AREA | NO. SQ FEET TAKEN | VALUE OF LAND TAKEN | DAMAGES SUSTAINED | BENEFITS RECEIVED | DAMAGES TO BE PAID BY | TOTAL AMOUNT OF DAMAGES RECEIVED LESS OF BENEFITS RECEIVED | TOTAL AMOUNT OF DAMAGES TO BE PAID BY LESS OF BENEFITS RECEIVED |
|--------------|---------|--------|--------|-------|-------------------|---------------------|-------------------|-------------------|-----------------------|--|---|
| Wm. C. Tracy | 1 | 100.00 | 100.00 | 10000 | 10000 | 10000 | 10000 | 10000 | 10000 | 10000 | 10000 |
| ... | ... | ... | ... | ... | ... | ... | ... | ... | ... | ... | ... |
| Total | | | | | 13298.60 | 108,875 | 13298.60 | 108,875 | 108,875 | 108,875 | 108,875 |