

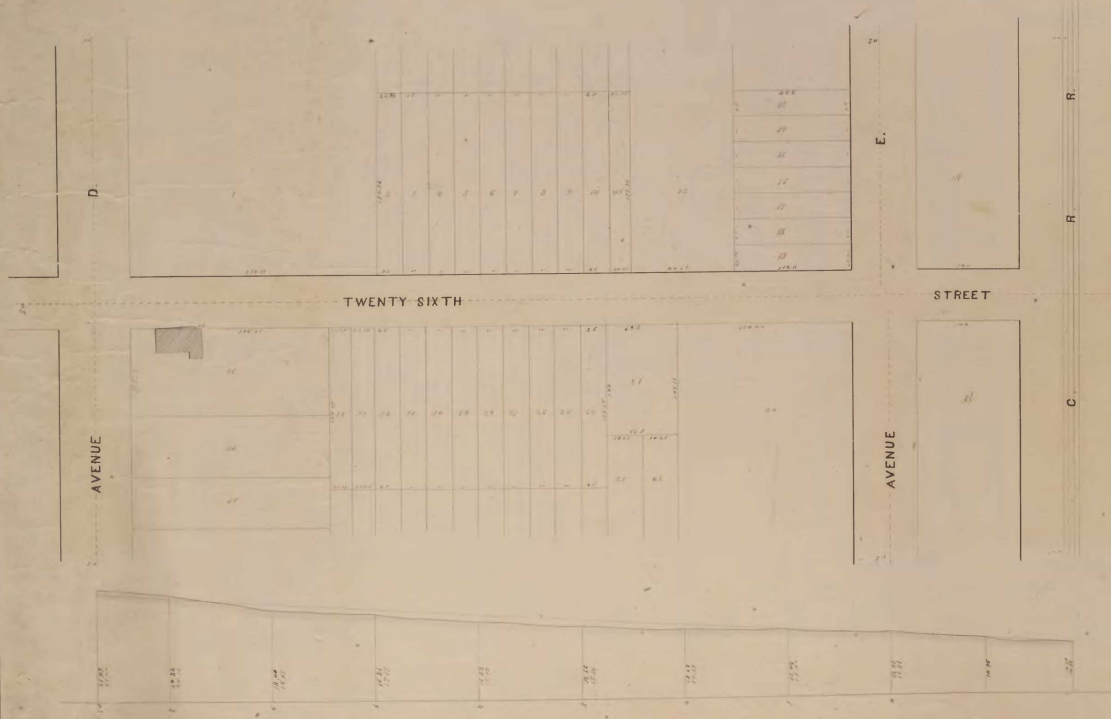
ASSESSMENT MAP

FOR THE
OPENING OF
TWENTY SIXTH STREET
 FROM
AVENUE D.
 TO THE
CENTRAL RAIL ROAD

Sept. 1869

Owner's Name	No. Lot	No. Square	Value of Land Taken	Benefit Received	Damage Sustained	Damage Paid by	Severing	Incidental Expenses	Total Amount of Damages at Benefit	Total Amount of Damages at Expense
Holt's Property	1	239.32					63.30	23.52		
Wood & Company	2-12	222.07					72.60	20.22		
Shaw's	13	100.00					13.40	9.00		
Prager & Sons	14-19	100.00					42.61	17.32		
C. S. I. Land Imp. Co.	4	100.00					70.42	7.00		
...	21	100.00					40.00	9.12		
Howe & Sons	20	170.00					16.00	10.22		
...	22	100.00					18.00	6.22		
Wood & Company	23-28	263.12					112.00	26.39		
...	29	100.00					60.00	19.20		
...	30	100.00								
...	31	100.00								
Total							533.00	127.27		

Incidental Expenses	
Printing Notices, Printing to	1.00
Commissioners Fees	60.00
Clubs Fee	20.00
...	
Non-Resident Com. for Assessment Map	2.00
...	2.53
Total	85.53



Certificate

This is to certify that we the undersigned Commissioners appointed by the Common Council to open Twenty Sixth Street and to be a part of said street received and assessment for Lots taken, benefits received, damages sustained and costs and expenses incurred in opening said street have made a correct and true assessment as shown on within map and assessment list.

Commissioners: { J. S. Bramhall
 J. H. Baskin
 J. T. Susate

Received of J. S. Bramhall
 April 26 1870
 J. H. Baskin
 J. T. Susate

