

Owners' Names	City Block Number	Plot Number	Commissioner's Lot Number	Number of Feet Front	Assessments					Total
					For Grading	For Curb	For Flag	For Intersecting	For Incidentals	
Trustees Emily L. Paret	378	55	1							66
		54	2							66
		53	3							66
		52	4							66
		51	5							66
		50	6	118.5	36 65	66 92	110 70	4 21	24 01	241 49
		49	7	25	7 73	13 90	23 36		5 07	50 72
		48	8	25	7 73	13 90	23 36		5 07	50 72
		47	9	25	7 73	13 90	23 36		5 07	50 72
		46	10	25	7 73	13 90	23 36		5 07	50 72
		45	11	25	7 73	13 90	23 36		5 07	50 72
		44	12	25	7 73	13 90	23 36		5 07	50 72
		43	13	25	7 73	13 90	23 36		5 07	50 72
		42	14	25	7 73	13 90	23 36		5 07	50 72
J.C. & B.R.P. Co.		41	15	33	10 21	18 37	30 81	64	6 68	66 71
Trustees Emily L. Paret		40	16	25	7 73	13 90	23 36		5 07	50 72
		39	17	25	7 73	13 90	23 36		5 07	50 72
		38	18	25	7 73	13 90	23 36		5 07	50 72
		37	19	25	7 73	13 90	23 36		5 07	50 72
Mary E. Palmer		36	20	25	7 73	13 90	23 36		5 07	50 72
		35	21	25	7 73	13 90	23 36		5 07	50 72
		34	22	25	7 73	13 90	23 36		5 07	50 72
William Avonach.		33	23	25	7 73	13 90	23 36		5 07	50 72
Mary E. Palmer.		32	24	25	7 73	13 90	23 36		5 07	50 72
		26	25							31
		27	26							31
		28	27							31
		29	28							31
		30	29							31
Neil O'Donnell.		31	30	108.5	33 56	60 35	101 34	1 79	21 98	219 03
John H. Watson.	392	31	31	108.5	33 56	60 34	101 34	1 43	21 98	218 63
		20	32							27
		21	33							27
		22	34							27
Abby Story Marshall.		23	35							13
John H. Watson.		18	36	25	7 73	13 90	23 36		5 07	50 33
		17	37	25	7 73	13 90	23 36		5 07	50 33
		16	38	25	7 73	13 90	23 36		5 07	50 33
Abby Story Marshall.		15	39	25	7 73	13 90	23 36		5 07	50 33
		14	40	25	7 73	13 90	23 36		5 07	50 33
Mary E. Palmer.		13	41	25	7 73	13 90	23 36		5 07	50 33
		12	42	25	7 73	13 90	23 36		5 07	50 33
		11	43	25	7 73	13 90	23 36		5 07	50 33
		10	44	25	7 73	13 90	23 36		5 07	50 33
J.C. & B.R.P. Co.		9	45	33	10 21	18 37	30 81	64	6 68	66 71
John H. Watson.		8	46	25	7 73	13 90	23 36		5 07	50 72
		7	47	25	7 73	13 90	23 36		5 07	50 72
		6	48	25	7 73	13 90	23 36		5 07	50 72
Mary E. Palmer		5	49	25	7 73	13 90	23 36		5 07	50 72
		4	50	25	7 73	13 90	23 36		5 07	50 72
		3	51	25	7 73	13 90	23 36		5 07	50 72
August Schmidt		2	52	25	7 73	13 90	23 36		5 07	50 72
		1	53	25	7 73	13 90	23 36		5 07	50 72
		54	54	118.5	36 65	63 92	110 70	4 12	24 01	241 40
Mary E. Palmer		53	55							71
		51	57							71
John H. Watson.	390	51	57							36
		50	58							36
Total				1370	*423 06	*761 87	*1279 04	*37 35	*277 72	*2780 54

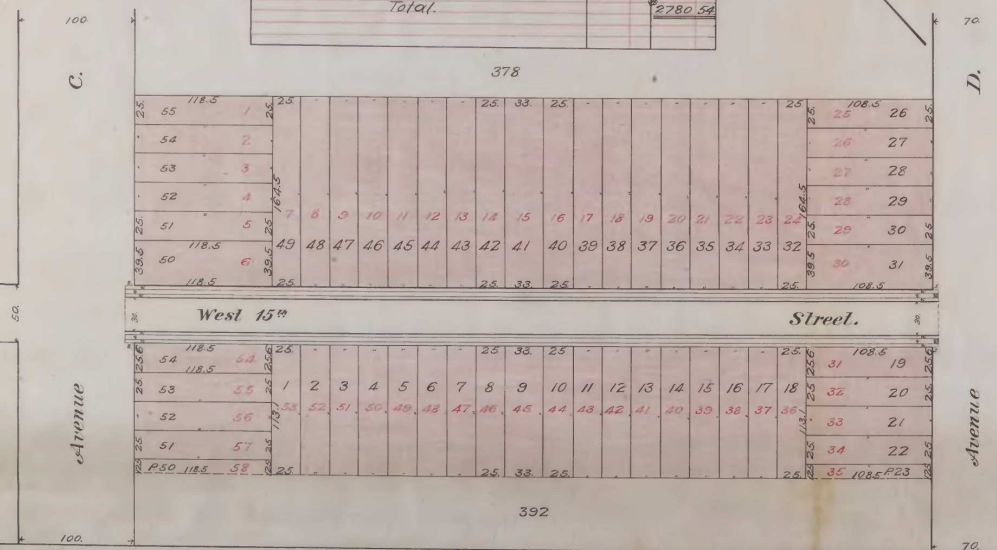
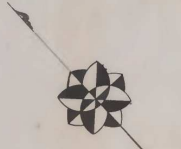
PRELIMINARY ASSESSMENT
MAP
For the Improvement of
WEST FIFTEENTH STREET.
From Avenue C. to Avenue D.
Made in Accordance with an Ordinance
Passed June 16th 1896.

Estimated Cost of Improvement.

Printing, Posting Notices &c.	30 00	
Commissioners' fees.	60 00	
Preliminary Surveys, Map and Assessment List.	48 86	
Cost of Preliminary Assessment.	138 86	
Estimated Final	138 86	
Incidentals.	*277 72	277 72
Estimated cost of work to be done.		2250 30
Superintendence and Inspectors fees.		252 52
Total.		*2780 54

This is to certify that we, the undersigned Commissioners appointed by the City Council to assess the Estimated cost and expenses to be incurred in the improvement of West 15th Street, between Avenue C. and Avenue D. In accordance with an Ordinance passed June 16th 1896 and approved June 18th 1896, and make a map of said improvement, have made said map and assessment as shown hereon.

Commissioners of Assessments
[Signature]
[Signature]



This is to certify that this map was made by the undersigned City Surveyor.

City Surveyor
[Signature]

Filed July 21st 1896
[Signature] City Clerk.

Scale - 1 inch = 50 Feet.

SMITH AND WESTON,
 Civil Eng^{rs} & Sur^{vs}
 Bayonne, N.J.

Reference

- Denotes New Flag to be laid.
- Flag to be re-laid.
- New Curb to be set.

West 15th Street
 Preliminary Map