

Owner's Name	Assessment	Front	Side	Rear	Total
C. R. Co. of N. J.	250	7	2	2	11
Matthew Ryan	257	24	11	11	46
Albion Cohen	258	1	1	1	3
St. Henry's R. Church	259	1	1	1	3
Charles W. Co. of N. J.	260	1	1	1	3
Empire City Co.	261	1	1	1	3
C. N. L. Imp. Co.	262	1	1	1	3
Archibald Stewart	263	1	1	1	3
Thomas Doyle	264	1	1	1	3
Green Bay Co.	265	1	1	1	3
C. N. L. Imp. Co.	266	1	1	1	3
William Kincaid	267	1	1	1	3
Total		7	2	2	11

Estimated Cost of Improvement.

Practical, Drawing, Materials, &c.	30.00
Commissioner's Fee	30.00
Contingency	30.00
Estimated Cost of Improvements	150.00
Estimated Cost of Surveying, Grading, and Appurtenances	1793.50
Estimated Cost of Surveying, Grading, and Appurtenances	200.00
Total	2223.50

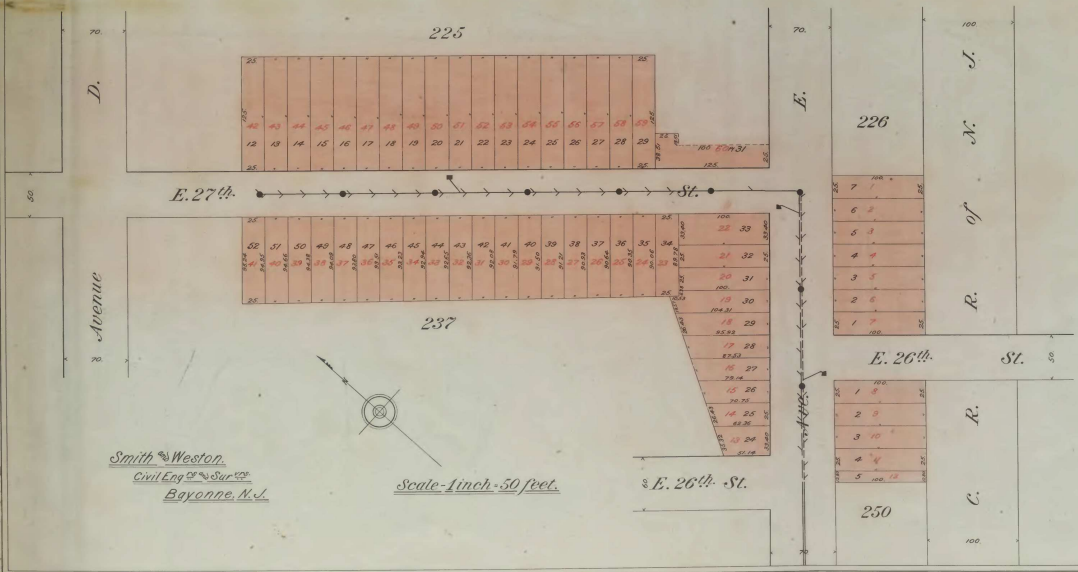
Preliminary Assessment Map
 For Constructing a Sewer and Appurtenances in
AVENUE E & EAST 27th STREET.
 Made in accordance with an Ordinance
 Passed April 21st 1896.

This is to certify that we, the undersigned Commissioners of Assessments appointed by the City Council to assess the construction of a Sewer and Appurtenances in AVENUE E and EAST 27th STREET, in accordance with an Ordinance Passed April 21st 1896, and make a map of said improvement, have made said map and Assessment as shown hereon.

Commissioners of Assessments
(Handwritten signatures)

Filed June 16th 1896
 City Clerk

This is to certify that this map was made by the undersigned City Surveyor
 City Surveyor



Smith & Weston,
 Civil Eng. & Surveyors
 Bayonne, N. J.

Scale - 1 inch = 50 feet.

CIVIL ENGINEER
 SURVEYOR
 N. J.