

Preliminary Assessment Map

For the Improvement of
West 26th Street.

Between Avenue C and Avenue D.

Made in accordance with an Ordinance

Passed May 3rd 1898.

This is to certify that we, the undersigned Commissioners of Assessments appointed by the City Council to assess the Estimated Cost and expenses to be incurred in the improvement of West 26th Street between Avenue C and Avenue D, in accordance with an Ordinance passed May 3rd 1898, and make a map of said improvement, have made said map as shown hereon.

Commissioners
of
Assessments

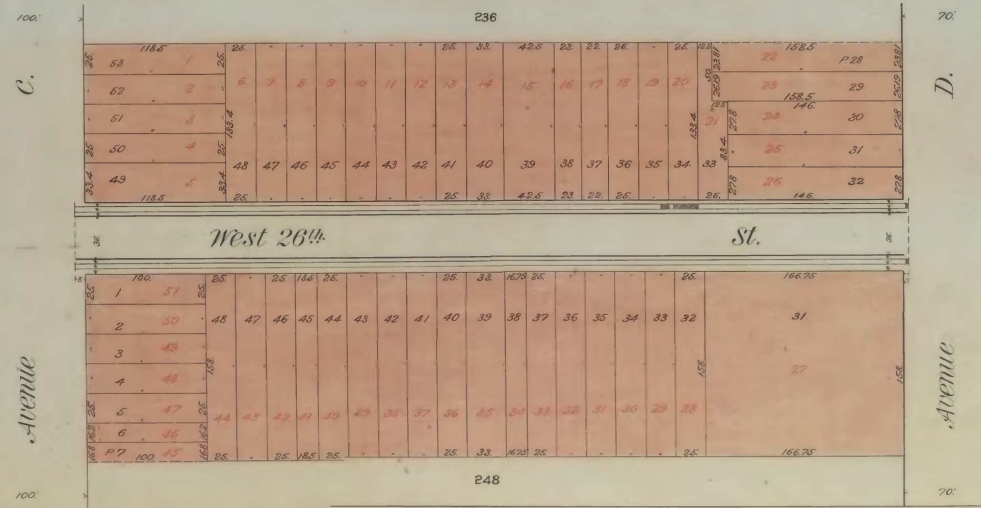
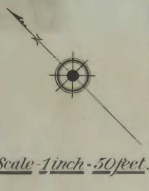
[Signatures]
James B. Brown
George S. Walker

Estimated Cost of Improvement.

Printing, Posting Notices, etc.	\$ 30 00	
Commissioners' fees	45 00	
Preliminary Survey Map and Assessment List	24 90	
Cost of Preliminary Assessment	109 90	
Estimated Final	109 90	
Incidentals	\$ 219 80	\$ 219 80
Estimated Cost of work to be done	1800 57	
Amount for Superintendence, and inspectors fees.	170 03	
Total	\$ 2190 40	

Smith & Weston
CIVIL ENG^{ERS} & SUR^{VEYORS}
Bayonne City, N.J.

Owners Name	City Block Number	City Lot Number	Number of Feet Front	Assessments.						Total.
				Regulating & Grating	For New Flag	For New Curb	For Flag & Sidewalk	For Intersecting	For Incidentals	
D. W. Oliver	236	53								53
		52								53
		51								53
		50								53
S. V. Wauers		49	118.50	9 10	93 38	64 85	3 25	19 02	189 60	
W. M.		48	26	2 65	19 70	13 68		4 01	40 57	
S. V.		47	26	2 65	19 70	13 68		4 01	40 57	
		46	26	2 65	19 70	13 68		4 01	40 57	
David Allen		45	26	2 65	19 70	13 68		4 01	40 57	
G. M. Joroleman		44	26	2 65	19 70	13 68		4 01	40 57	
Charles Drexler		43	26	2 65	19 70	13 68		4 01	40 57	
J. C. & B. R. Co.		42	26	2 65	19 70	13 68		4 01	40 57	
Mrs. Jennie Bradford		41	26	2 65	19 70	13 68		4 01	40 57	
A. F. Woodward		40	38	3 49	26 00	18 06		5 30	53 45	
		39	48.50	4 50	33 49	23 26		6 22	68 46	
		38	23	2 43	18 12	12 58		3 69	37 63	
		37	22	2 33	17 34	12 04		3 53	35 34	
J. Joroleman		36	26	2 65	19 70	13 68		4 01	40 57	
Mrs. Gilbert		35	26	2 65	19 70	13 68		4 01	40 57	
J. Joroleman		34	26	2 65	19 70	13 68		4 01	40 57	
S. V. Wauers		33	26	2 65	19 70	13 68		4 01	40 57	
G. Joroleman		32	26	2 65	19 70	13 68		4 01	40 57	
		31	26	2 65	19 70	13 68		4 01	40 57	
City of Bayonne	248	30	146	12 01	115 05	79 89		1 57	234 53	231 95
		29	166.75	14 21	131 40	91 26		2 06	267 70	265 69
		28	26	2 65	19 70	13 68		4 01	40 20	
		27	26	2 65	19 70	13 68		4 01	40 20	
		26	26	2 65	19 70	13 68		4 01	40 20	
		25	26	2 65	19 70	13 68		4 01	40 20	
		24	26	2 65	19 70	13 68		4 01	40 20	
		23	26	2 65	19 70	13 68		4 01	40 20	
		22	26	2 65	19 70	13 68		4 01	40 20	
		21	26	2 65	19 70	13 68		4 01	40 20	
		20	26	2 65	19 70	13 68		4 01	40 20	
		19	26	2 65	19 70	13 68		4 01	40 20	
		18	26	2 65	19 70	13 68		4 01	40 20	
		17	26	2 65	19 70	13 68		4 01	40 20	
		16	26	2 65	19 70	13 68		4 01	40 20	
		15	26	2 65	19 70	13 68		4 01	40 20	
		14	26	2 65	19 70	13 68		4 01	40 20	
		13	26	2 65	19 70	13 68		4 01	40 20	
		12	26	2 65	19 70	13 68		4 01	40 20	
		11	26	2 65	19 70	13 68		4 01	40 20	
		10	26	2 65	19 70	13 68		4 01	40 20	
		9	26	2 65	19 70	13 68		4 01	40 20	
		8	26	2 65	19 70	13 68		4 01	40 20	
		7	26	2 65	19 70	13 68		4 01	40 20	
		6	26	2 65	19 70	13 68		4 01	40 20	
		5	26	2 65	19 70	13 68		4 01	40 20	
		4	26	2 65	19 70	13 68		4 01	40 20	
		3	26	2 65	19 70	13 68		4 01	40 20	
		2	26	2 65	19 70	13 68		4 01	40 20	
		1	26	2 65	19 70	13 68		4 01	40 20	
TOTAL			1370.00	131 33	1058 28	749 69	3 54	27 76	219 80	2190 40



This is to certify that this map was made by the undersigned City Surveyor.

[Signature] City Surveyor.

Filed *[Date]* City Clerk.

Note:
 — Denotes Flag to be re-laid.
 — " " New Flag to be laid.
 — " " " " " " " "