

ASSESSMENT NUMBER 372

Final Assessment Map  
For the Improvement of  
**Forty-fifth Street**  
From Avenue C to Avenue E  
in accordance with an Ordinance passed  
April 15<sup>th</sup> 1902.

This is to certify that we, the undersigned Commissioners of Assessments appointed by the City Council to assess the costs and expenses incurred in the improvement of ~~Forty-fifth Street~~ **Forty-fifth Street** from Avenue C to Avenue E, in accordance with an Ordinance passed April 15<sup>th</sup> 1902, and make a map of said improvement, have made said map and assessment as shown hereon.

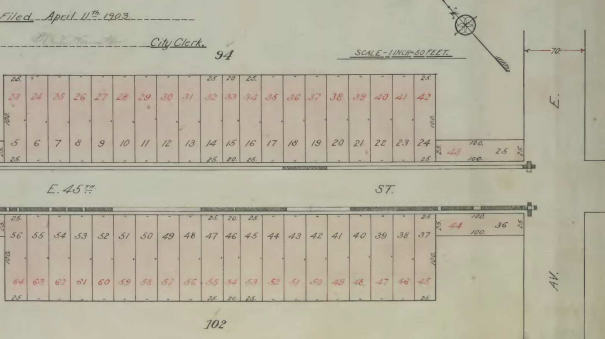
*Lawrence Hill* } Commissioners  
*John Thornburn* } of Assessments  
*John J. ...*

|  |                |
|--|----------------|
| Printing, Posting notices, etc.        | 38.00          |
| Commissioner's fees                    | 380.00         |
| Final Surveys, Map and Assessment list | 72.00          |
| Cost of Final Assessment, Preliminary  | 132.00         |
| Interest                               | 264.10         |
| <b>Total</b>                           | <b>824.10</b>  |
| Interest                               | 179.10         |
| <b>Total</b>                           | <b>1003.20</b> |

This is to certify that this map was made by the undersigned  
*Samuel J. ...* City Surveyor.

REFERENCE  
TO NEW CLAS  
IN CASE BEHALF

| OWNER'S NAME. | NUMBER OF FEET OF FRONT | AREA IN SQUARE FEET | ASSESSMENT PER 100 FEET OF FRONT | ASSESSMENT |
|---------------|-------------------------|---------------------|----------------------------------|------------|
| Henry C. ...  | 15                      | 1500                | ...                              | ...        |
| A.B. ...      | 15                      | 1500                | ...                              | ...        |
| J.M. ...      | 15                      | 1500                | ...                              | ...        |
| L.A. ...      | 15                      | 1500                | ...                              | ...        |
| ...           | ...                     | ...                 | ...                              | ...        |
| <b>Total</b>  | <b>3750</b>             | <b>37500</b>        | <b>...</b>                       | <b>...</b> |



Filed April 11<sup>th</sup> 1902  
City Clerk

35731