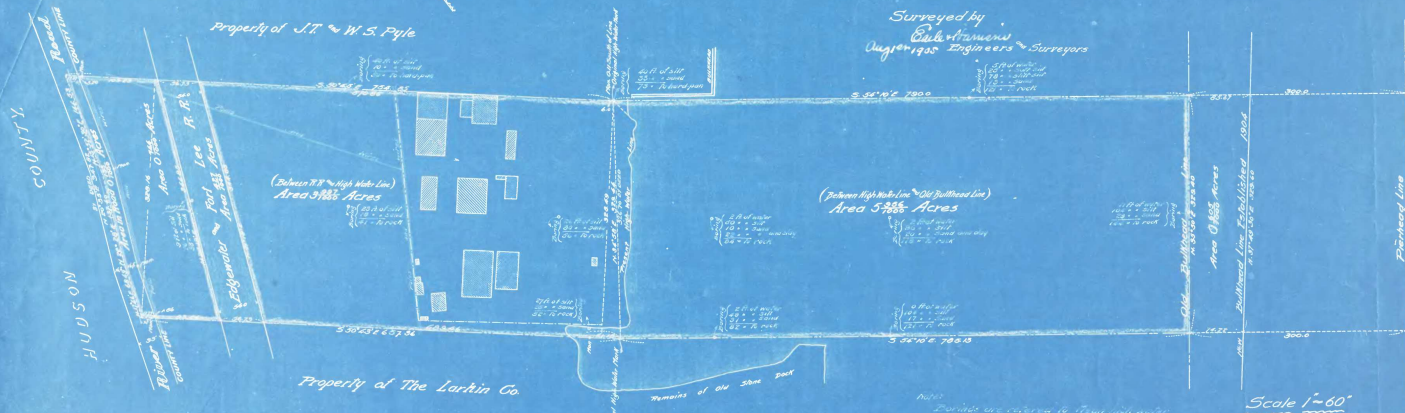


MAP
 Showing Survey for
THE BULLS FERRY CHEMICAL CO.
 Of Property Situated In
 BOROUGH OF EDGEWATER
 BERGEN CO.
 N.J.

Surveyed by
 C. L. VANANAN
 August 1925
 Engineers & Surveyors



Scale 1"=60'

Hudson River

#26