

HEIGHTS
Heights in feet above Mean High Water.

SUPPLEMENTAL INFORMATION
Consult U.S. Coast Pilot 3 for important supplemental information.

PRINT-ON-DEMAND CHARTS
NOAA and its partner, OceanGrafix, offer this chart updated weekly by NOAA for Notices to Mariners and critical corrections. Charts are printed when ordered using Print-on-Demand technology. New Editions are available 5-8 weeks before their release as traditional NOAA charts. Ask your chart agent about Print-on-Demand charts or contact NOAA at 1-800-584-6883, <http://NauticalCharts.gov>, help@NauticalCharts.gov, or help@OceanGrafix.com.

AUTHORITIES
Hydrography and topography by the National Ocean Service, Coast Survey, with additional data from the Corps of Engineers and U.S. Coast Guard.

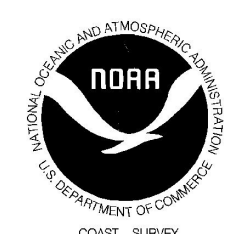
CAUTION
Temporary changes or defects in aids to navigation are not indicated on this chart. See Local Notice to Mariners.
During some winter months or when endangered by ice, certain aids to navigation are replaced by other types or removed. For details see U.S. Coast Guard Light List.

NOAA WEATHER RADIO BROADCASTS
The NOAA Weather Radio stations listed below provide continuous weather broadcasts. The reception range is typically 20 to 40 nautical miles from the antenna site, but can be as much as 100 nautical miles for stations at high elevations.

| Location | Frequency |
|-------------------|-------------------|
| Atlantic City, NJ | KHB-38 162.40 MHz |
| Lewes, DE | WXJ-94 162.55 MHz |

For Symbols and Abbreviations see Chart No. 1.

COLREGS: International Regulations for Preventing Collisions at Sea, 1972.
Demarcation lines are shown thus: ---



UNITED STATES - EAST COAST
NEW JERSEY
CAPE MAY HARBOR

Mercator Projection
Scale 1:10,000 at Lat. 38° 57'
North American Datum of 1983
(World Geodetic System of 1984)
SOUNDINGS IN FEET
AT MEAN LOWER LOW WATER

| Place | TIDAL INFORMATION | | | |
|--|--|-----------------|----------------|-------------------|
| | Height referred to datum of soundings (MLLW) | Mean High Water | Mean Low Water | Extreme Low Water |
| Name (LAT/LONG) | feet | feet | feet | feet |
| Cape May Harbor (38° 57' N, 74° 52' W) | 4.9 | 4.6 | 0.2 | -3.0 |

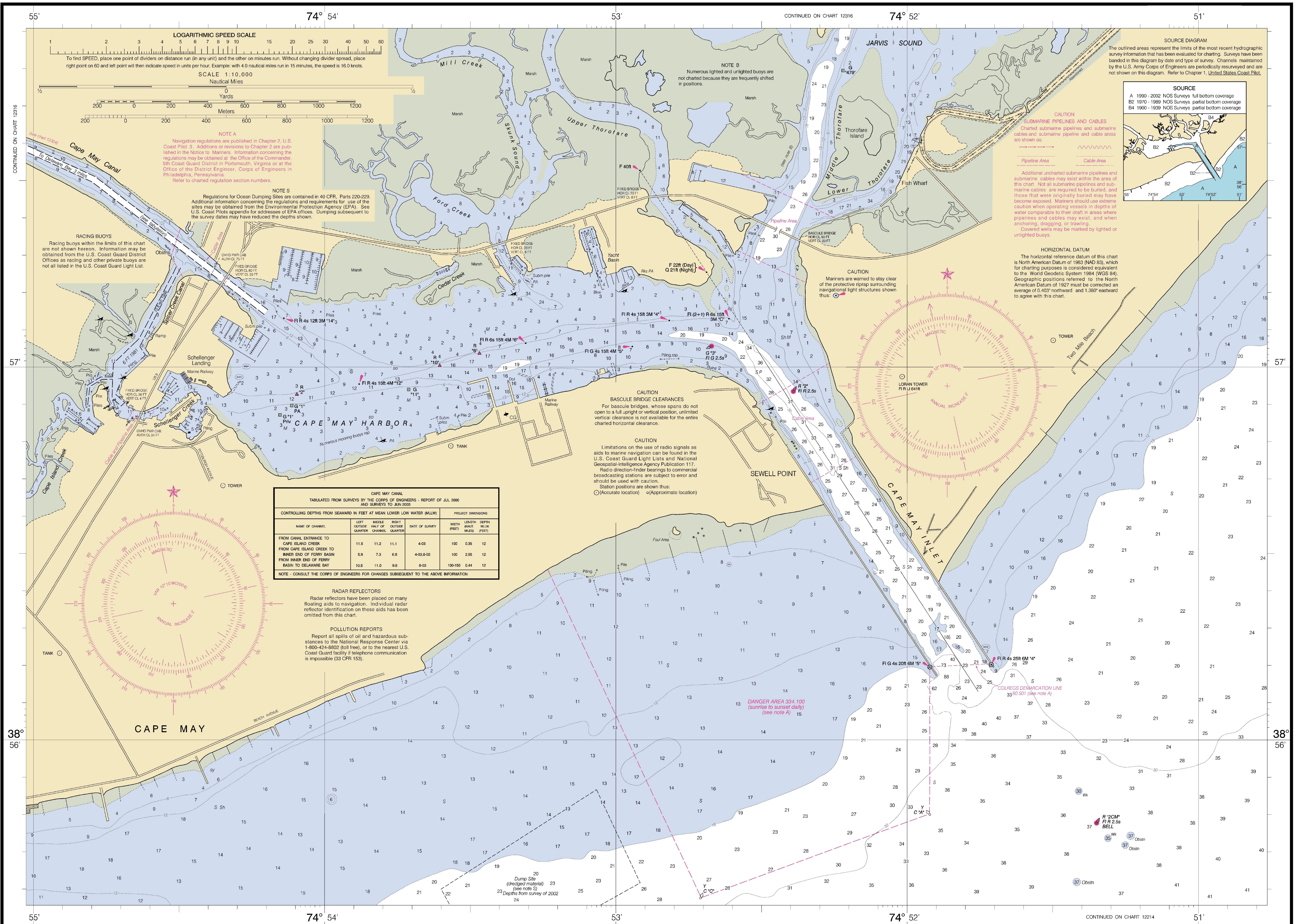
(Dec 2001) Latest available information.

NSN 7642014010369
NGA REFERENCE NO. 12XHA12317

WARNING
The prudent mariner will not rely solely on any single aid to navigation, particularly on floating aids. See U.S. Coast Guard Light List and U.S. Coast Pilot for details.

AIDS TO NAVIGATION
Consult U.S. Coast Guard Light List for supplemental information concerning aids to navigation.

SOUNDINGS IN FEET



32nd Ed., May / 04 ■ Corrected through NM May 8/04
Corrected through LNM Apr. 27/04

12317

CAUTION
This chart has been corrected from the Notice to Mariners (NM) published weekly by the National Geospatial-Intelligence Agency and the Local Notice to Mariners (LNM) issued periodically by each U.S. Coast Guard district to the dates shown in the lower left hand corner.

This nautical chart has been designed to promote safe navigation. The National Ocean Service encourages users to submit corrections, additions, or comments for improving this chart to the Chief, Marine Chart Division (NCS2), National Ocean Service, NOAA, Silver Spring, Maryland 20910-3282.

Published at Washington, D.C.
U.S. DEPARTMENT OF COMMERCE
NATIONAL OCEANIC AND ATMOSPHERIC ADMINISTRATION
NATIONAL OCEAN SERVICE
COAST SURVEY

| FATHOMS | 1 | 2 | 3 | 4 | 5 | 6 | 7 | 8 | 9 | 10 | 11 | 12 | 13 | 14 | 15 | 16 | 17 |
|---------|---|----|----|----|----|----|----|----|----|----|----|----|----|----|----|----|-----|
| FEET | 6 | 12 | 18 | 24 | 30 | 36 | 42 | 48 | 54 | 60 | 66 | 72 | 78 | 84 | 90 | 96 | 102 |
| METERS | 1 | 2 | 3 | 4 | 5 | 6 | 7 | 8 | 9 | 10 | 11 | 12 | 13 | 14 | 15 | 16 | 17 |

Cape May Harbor
SOUNDINGS IN FEET - SCALE 1:10,000

12317