

**H**ERE, on Seabrook Farms, is one of the finest housing developments in the nation—housing for the workers at Deerfield Packing Corporation. A complete section of this project is composed of homes for families, solidly constructed, comfortable and convenient.

Set apart from the dormitory units, it is a modern village in itself with all the advantages to the family that a small city may offer plus the health-giving qualities of “A home in the country”.

These homes contain living room—dining room, kitchen, bath and one, two or three bedrooms.

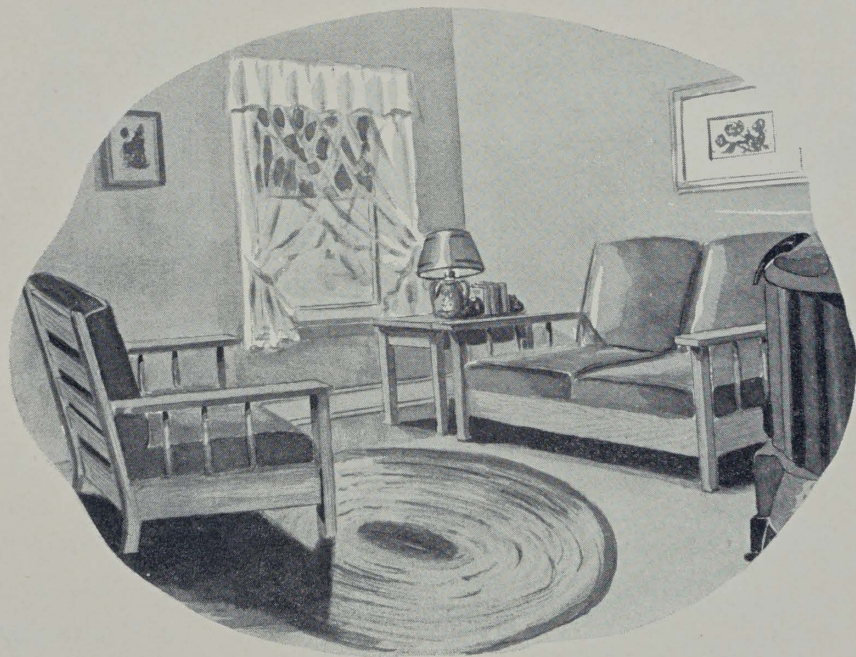
A Community Building serves as the central headquarters for entertainment, social events and meetings of neighbors. A large general store on the spot assures a stock of family needs always available, at prices that will meet competition. A completely equipped hospital, with doctors and nurses in attendance, is the constant protector of health.

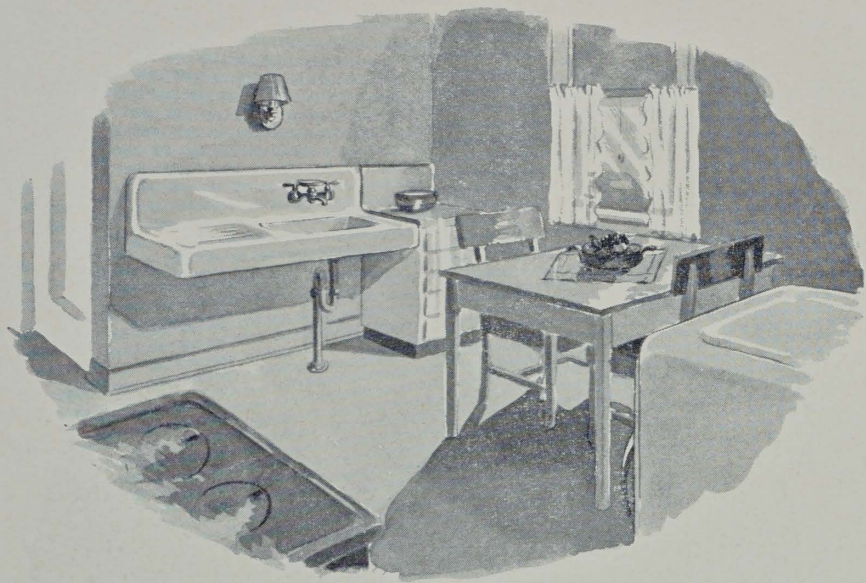
Children of the families living here have a fine grade school close by; high school is reached by a short bus ride.

Residents of these homes are but a short walk from their job at Deerfield Packing Corporation plant.

Homes are equipped with screens and storm-sash.

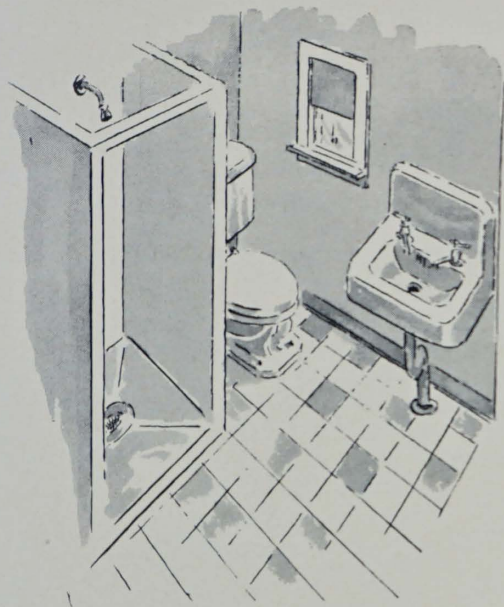
THE LIVING ROOM . . . designed for  
home-like atmosphere . . . ample in  
size for the family and entertaining of  
friends.





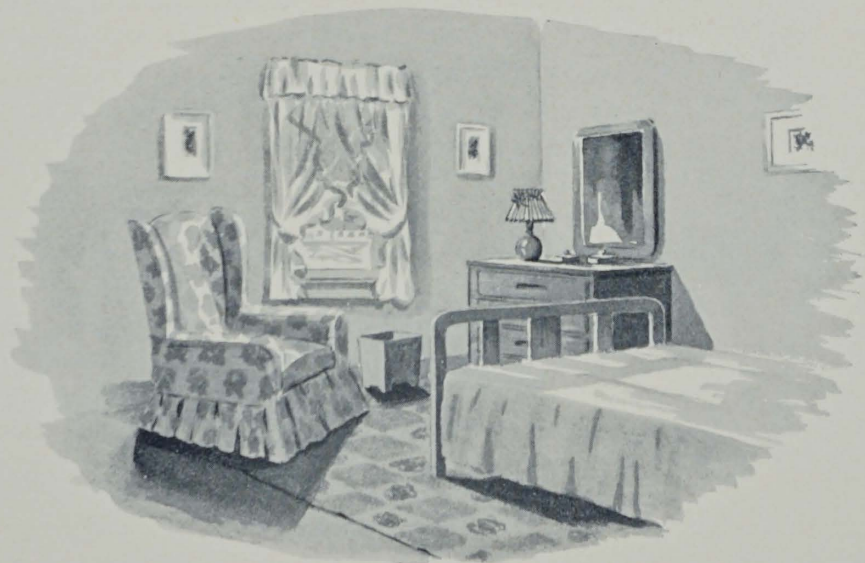
**T**HE KITCHEN . . . designed to save steps . . . a kitchen having everything that makes for efficient house-keeping . . . easy to keep clean, well equipped, cool in summer.





**A** MODERN BATHROOM  
 . . . stall shower, fine  
 plumbing fixtures . . . clean  
 . . . sanitary . . .

**T**HE BED-ROOM . . . comfortable, ample in  
 size, cool and well-ventilated in summer,  
 warm in winter.



**A** BIRDSEYE view of the Village at Seabrook Farms, for workers at Deerfield Packing Corporation . . . Expert site-planning assures a spaciousness not ordinarily found in housing developments . . . wide roads for workers' automobiles, or delivery wagons, and walks for pedestrians, assure safety and convenience. The development is lighted at night and provides all modern utilities . . . The homes are located in the upper-right portion of the illustration . . . the school may be seen as the building at top left-center.

(ALL ILLUSTRATIONS SHOWN IN THIS BOOK ARE ARTIST'S APPROXIMATIONS)

