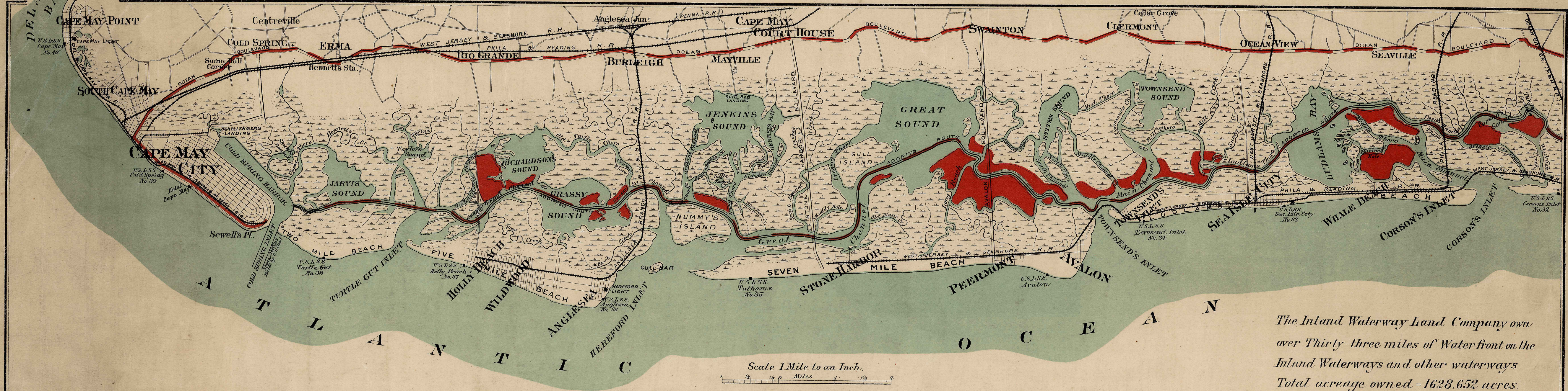


34-22

MAP SHOWING INLAND WATERWAY AND NEW STATE HIGHWAY



The Inland Waterway Land Company own
over Thirty-three miles of Water front on the
Inland Waterways and other waterways
Total acreage owned = 1628.652 acres.



INLAND WATERWAY LAND COMPANY

owns about Sixteen Hundred acres and over 33 miles of water frontage as indicated between Cape May and Atlantic City, on the inland waterway that is being constructed by the State of New Jersey, which has appropriated a large sum of money for this purpose between Cape May and Bay Head, a distance of 120 miles. Considerable of the work has been completed between Cape May and Atlantic City, so that boats drawing less than 7 feet of water can use this water boulevard at low tide. This Waterway is a most unique proposition, being not less than 100 feet wide at any place, is land-locked, but the ocean can be seen from any point along its entire length; and is near the new ocean highway that is also being built by the State between Cape May and Atlantic Highlands, most of which has been completed in Cape May County.

We sell lots for bungalow and boat-house purposes at prices that will permit the purchaser not only to make money, but to have every known water pleasure—boating, hunting, fishing, bathing, etc. Our holdings are accessible to and near Wildwood, Anglesea, Stone Harbor, Avalon, Sea Isle City and Ocean City, and will have the advantage of the large increase in value that accrues to all these progressive places named, especially the water front. Remember this is a water front investment opportunity that comes but once in a lifetime.

Prices of the lots are within the reach of everyone.

For further information, write the main office of the Company at Cape May, N. J., addressing INLAND WATERWAY LAND CO., Cape May, N. J.

June 1, 1910.

#3