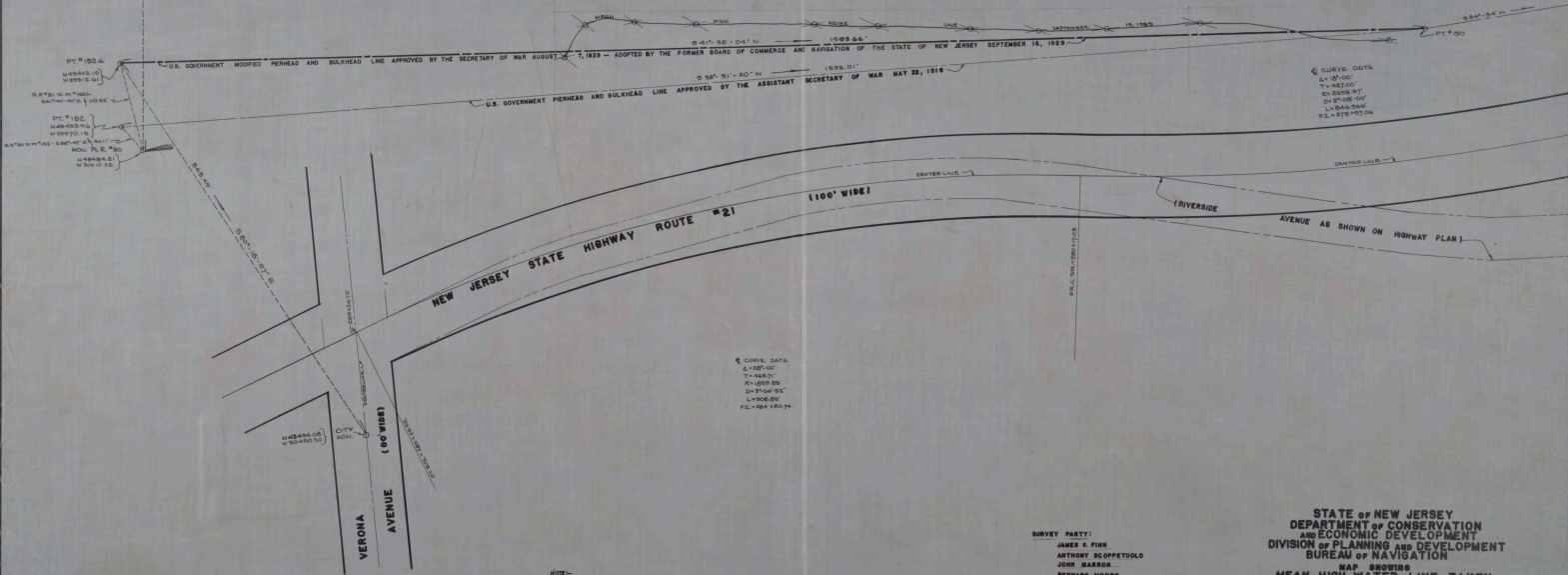
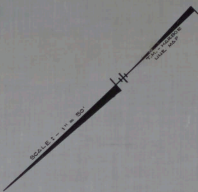


PASSAIC

RIVER

U.S. GOVERNMENT
SHEETS 1118-1119
"SARANTON"



Q CURVE DATA
L=105.00'
T=487.50'
R=2280.00'
E=14°-08'-00"
L=264.000'
P.E.=270+50.00'

Q CURVE DATA
L=120.00'
T=488.70'
R=2609.80'
E=15°-04'-00"
L=308.800'
P.E.=204+80.00'

VERONA AVENUE
(80' WIDE)

NEW JERSEY STATE HIGHWAY ROUTE #21
(100' WIDE)

STATE OF NEW JERSEY
DEPARTMENT OF CONSERVATION
AND ECONOMIC DEVELOPMENT
DIVISION OF PLANNING AND DEVELOPMENT
BUREAU OF NAVIGATION

MAP SHOWING
MEAN HIGH WATER LINE TAKEN
SEPTEMBER 13, 1955
IN THE VICINITY OF
VERONA AVENUE
IN THE CITY OF NEWARK
IN THE COUNTY OF ESSEX

SURVEY PARTY:
JAMES R. FINE
ANTHONY SCOPPETUOLO
JOHN MARROW
BERNARD MOORE

P. Garrison
PETER S. GARRISON—BUREAU CHIEF
R. J. ENNIS, LIC. NO. 117

NOTE—
ROUTE #21 LAYOUT TAKEN FROM STATE HIGHWAY PLANS SHEET 4 OF
7 SHEETS FILED WITH ESSEX COUNTY CLERK, MARCH 21, 1950
ELEVATION TAKEN FROM U.S.G.S. MON. W-11 LOCATED ON
HIGHWAY, MIDWAY BETWEEN VERONA AND STEVENS AVENUES.
AT ERSE PALMS OVERHEAD CROSSING IN THE NORTHWEST
CORNER OF THE WEST ABUTMENT ABOUT 8' HIGHER THAN TOP
OF CURB. ELEVATION = 48'7 1/2" ABOVE MEAN SEA LEVEL.
MEAN HIGH WATER LINE ELEVATION = 48'0" ABOVE MEAN SEA LEVEL.

