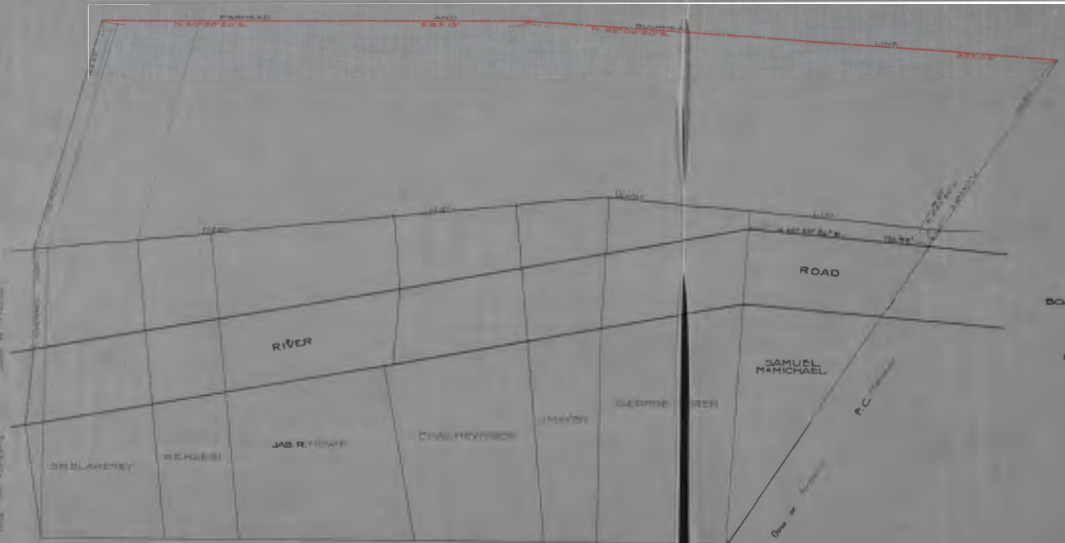


SHARK

RIVER



NO. 257  
 STATE OF NEW JERSEY  
 BOARD OF COMMERCE AND NAVIGATION  
 MAP SHOWING  
 PIERHEAD AND BULKHEAD LINE  
 ON SHARK RIVER  
 IN THE TOWNSHIP OF WALL  
 IN THE COUNTY OF MONMOUTH  
 ADOPTED NOVEMBER 21 1927

*John R. ...*  
*John R. ...*  
*John R. ...*  
*John R. ...*

— A —  
 — 21 —  
 — 72 —

WATER  
*Victory & ...*