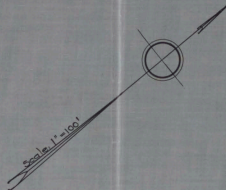
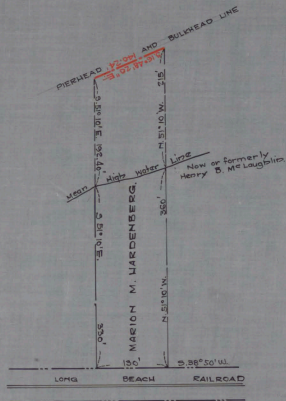


LITTLE EGG HARBOR BAY



No. 275
 STATE OF NEW JERSEY
 BOARD OF COMMERCE AND NAVIGATION.
 MAP SHOWING
 PIERHEAD AND BULKHEAD LINE
 ON LITTLE EGG HARBOR BAY
 IN THE TOWNSHIP OF LONG BEACH
 IN THE COUNTY OF OCEAN
 ADOPTED JULY 16, 1928.

Augustus Smith
Richard E. Johnson
William H. Hark
W. J. James
James H. Hark
James H. Hark
Augustus Smith

CABINET AARM NO. 31FOLDER NO. SHEET NO. 87

Attest

Victor Behrman
 Director and Chief Engineer