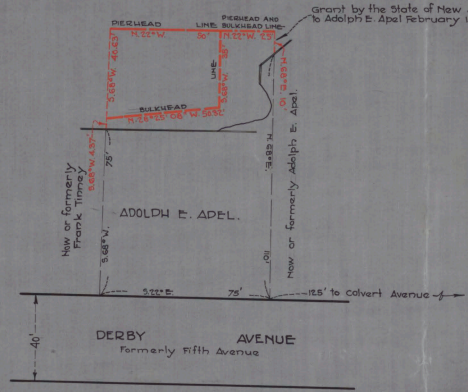
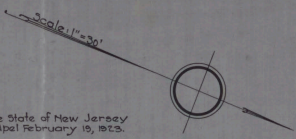


CABINET A  
ARM NO. 31  
FOLDER NO.  
SHEET NO. 93

INSIDE THOROUGHFARE



Grant by the State of New Jersey to Adolph E. Abel February 19, 1923.

NO. 281  
 STATE OF NEW JERSEY  
 BOARD OF COMMERCE AND NAVIGATION  
 MAP SHOWING  
 PIERHEAD LINES AND BULKHEAD LINES  
 ON INSIDE THOROUGHFARE  
 IN THE CITY OF VENTNOR CITY IN THE  
 COUNTY OF ATLANTIC  
 ADOPTED SEPT. 24, 1928.

*Spencer Smith*

\_\_\_\_\_  
*Augustine Smith*  
 \_\_\_\_\_  
*William E. Smith*  
 \_\_\_\_\_  
*John W. Smith*  
 \_\_\_\_\_

ATTENT:  
*Victor E. Linean*  
 Director and Chief Engineer

112-91