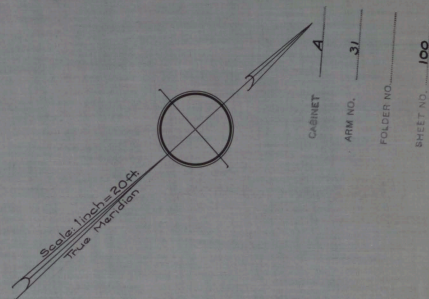
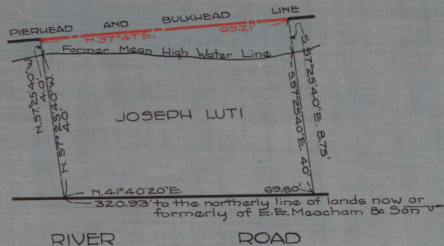


PASSAIC

RIVER



No 200
STATE OF NEW JERSEY
BOARD OF COMMERCE AND NAVIGATION
MAP SHOWING
PIERHEAD AND BULKHEAD LINE
ON PASSAIC RIVER
IN THE BOROUGH OF NORTH ARLINGTON IN THE
COUNTY OF BERGEN
ADOPTED JANUARY 21, 1929.

S *James Smith*
J *Richard G. Johnson*
S *William J. ...*
C *Murphy, Clerk*
T *Robert J. ...*
William J. ...

Attest:

Victor R. Linean
Director and Chief Engineer