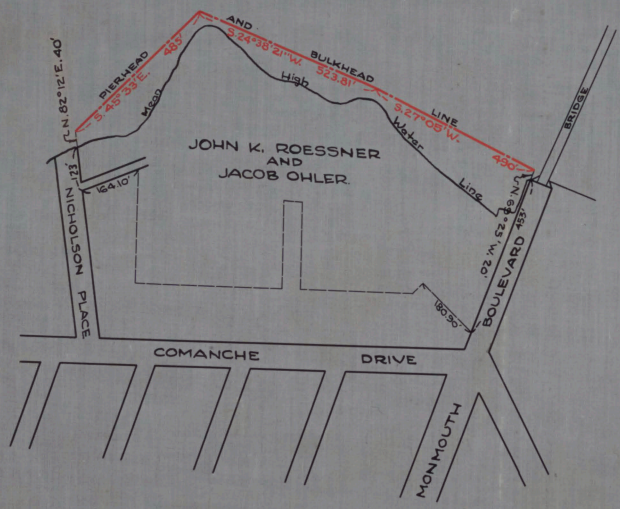
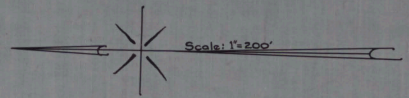


CABINET A
 ARM NO. 31
 FOLDER NO. _____
 SHEET NO. 117

PLEASURE SHREWSBURY RIVER
 BAT RIVER



NO 374
 STATE OF NEW JERSEY
 BOARD OF COMMERCE AND NAVIGATION
 MAP SHOWING
 PIERHEAD AND BULKHEAD LINE
 ON SHREWSBURY RIVER
 IN THE BOROUGH OF OCEANPORT IN THE
 COUNTY OF MONMOUTH
 ADOPTED JULY 21, 1930.

S *Joseph Smith*
 K *William T. Kirk*
 T *Thomas D. ...*
 S *Augustine Smith*
 M *John ...*

Attest: *Victor ...*
 Director and Chief Engineer