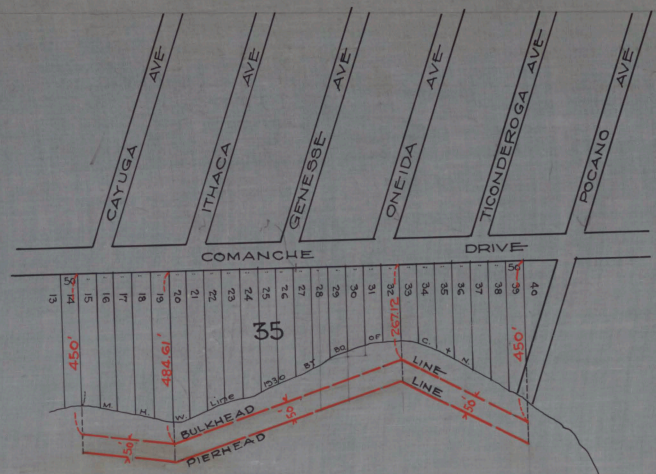


204

112-204

112-204



CABINET A
 ARM NO. 31
 FOLDER NO. _____
 SHEET NO. 118

SOUTH SHREWSBURY RIVER

PLEASURE BAY

BAY

No 315

STATE OF NEW JERSEY
 BOARD OF COMMERCE AND NAVIGATION
 MAP SHOWING
 PIERHEAD LINE AND BULKHEAD LINE
 ON PLEASURE BAY
 IN THE BOROUGH OF OCEANPORT
 IN THE COUNTY OF MONMOUTH
 ESTABLISHED DECEMBER 15, 1930

John J. Smith
 K *William H. Wood*
 M *John J. Smith*
 P *Augustus Smith*
 D *James J. Donaghy*

ATTEST: *Victor Gelineau* 112-204
 DIRECTOR AND CHIEF ENGINEER.

112 204

112 204