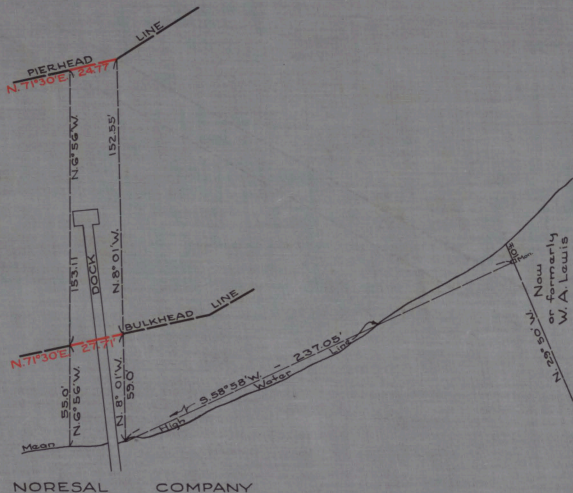


NAVESINK OR NORTH SHREWSBURY RIVER



checky  
80

CABINET A  
 ARM NO. 31  
 FOLDER NO. \_\_\_\_\_  
 SHEET NO. 124

NO. 321  
 STATE OF NEW JERSEY  
 BOARD OF COMMERCE AND NAVIGATION  
 MAP SHOWING  
 PIERHEAD AND BULKHEAD LINES  
 ON NAVESINK OR NORTH SHREWSBURY RIVER  
 IN THE BOROUGH OF FAIR HAVEN IN THE  
 COUNTY OF MONMOUTH  
 ADOPTED JANUARY 19 1931.

- S *Openess Smith*
- K *William H. Hild*
- M *John Smith*
- S *Augustus Smith*
- D *Sammy*

Attest:

*Victor K. Levine*  
 DIRECTOR AND CHIEF ENGINEER