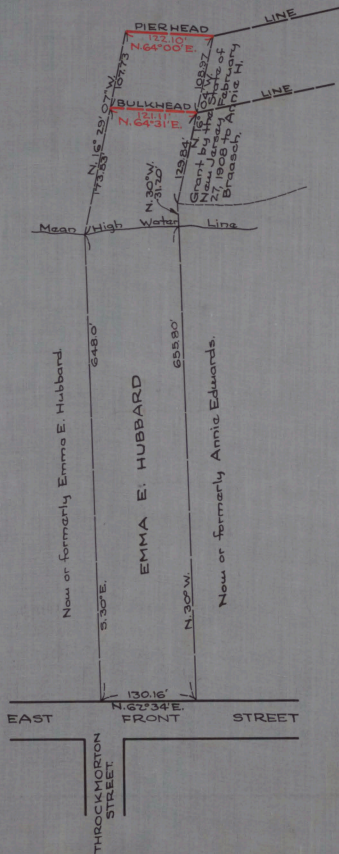


NAVESINK OR NORTH SHREWSBURY RIVER



CABINET A
 ARM NO. 31
 FOLDER NO. _____
 SHEET NO. 129

NO. 326
 STATE OF NEW JERSEY
 BOARD OF COMMERCE AND NAVIGATION
 MAP SHOWING
 PIERHEAD LINE AND BULKHEAD LINE
 ON NAVESINK OR NORTH SHREWSBURY RIVER
 IN THE BOROUGH OF RED BANK IN THE
 COUNTY OF MONMOUTH
 ADOPTED FEBRUARY 16, 1931.

JSS *Jessie Smith*
 WTK *William T. Kirk*
 AS *Augustine Smith*
 FD *Frank Doney*
 JM *John J. M... ..*
 JWC *James W. C... ..*

Attest:
Victor Beliveau
 DIRECTOR AND CHIEF ENGINEER