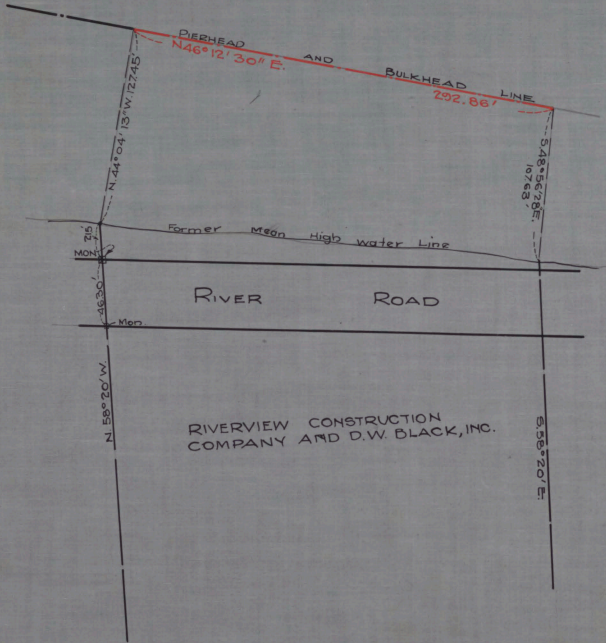
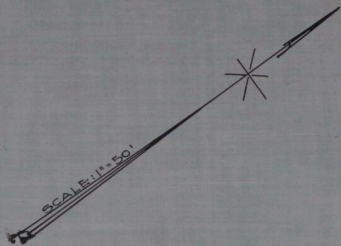


3418

CABINET A  
ARM NO. 31  
FOLDER NO.  
SHEET NO. 133



NO. 330  
STATE OF NEW JERSEY  
BOARD OF COMMERCE AND NAVIGATION  
MAP SHOWING  
PIERHEAD AND BULKHEAD LINES  
ON DELAWARE RIVER  
IN THE TOWNSHIP OF BURLINGTON IN THE  
COUNTY OF BURLINGTON  
ESTABLISHED MARCH 16, 1931.

*JB*  
*Spencer Smith*  
*John Smith*  
*William J. Wild*  
*Josephine Smith*  
*Wm. Boyce*

RIVERVIEW CONSTRUCTION  
COMPANY AND D.W. BLACK, INC.

Attest-  
*Victor Beliveau*  
DIRECTOR AND CHIEF ENGINEER.