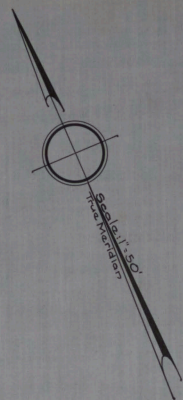
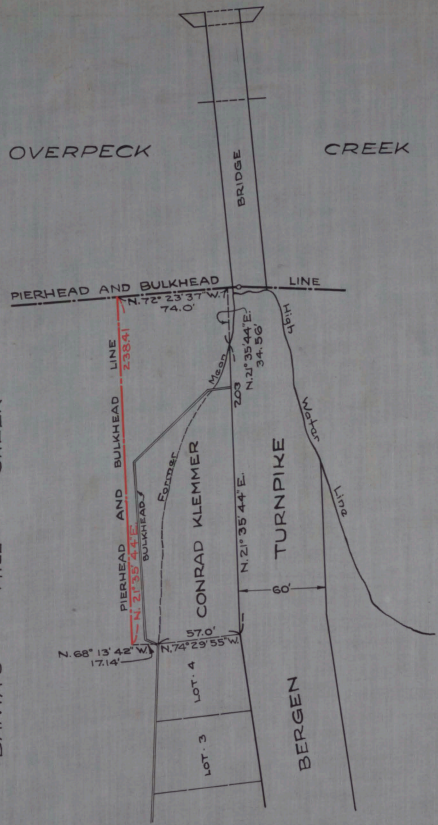


BANTA'S MILL CREEK



NO 331
 STATE OF NEW JERSEY
 BOARD OF COMMERCE AND NAVIGATION
 MAP SHOWING
 PIERHEAD AND BULKHEAD LINE
 ON BANTA'S MILL CREEK
 IN THE BOROUGH OF RIDGEFIELD IN THE
 COUNTY OF BERGEN
 ADOPTED MARCH 16, 1931.

J.B.

J. Spencer Smith
John Daniels
Michael Wick
Augustine Smith
Frank Henry

Attest:
Victor Belmont
 DIRECTOR AND CHIEF ENGINEER

CABINET A
 ARCH. NO. 31
 FOLDER NO. _____
 SHEET NO. 134