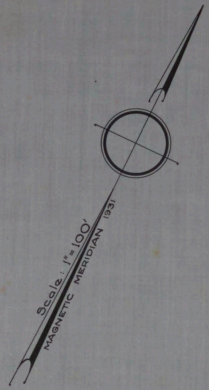
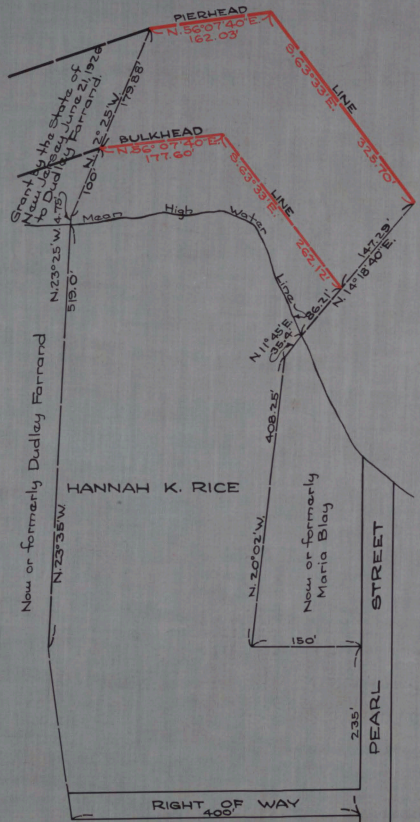


NAVESINK OR NORTH SHREWSBURY RIVER



CABINET A
 ARCH. NO. 31
 FOLDER NO. _____
 SHEET NO. 135

NO. 332
 STATE OF NEW JERSEY
 BOARD OF COMMERCE AND NAVIGATION
 MAP SHOWING
 PIERHEAD AND BULKHEAD LINES
 ON NAVESINK OR NORTH SHREWSBURY RIVER
 IN THE BOROUGH OF FAIR HAVEN IN THE
 COUNTY OF MONMOUTH
 ADOPTED MARCH 16, 1931.

JH

I concur with
John Vanmeter
Miner's Secy.
Augustine Smith
West Ferry

Attest:

Victor Belman
 DIRECTOR AND CHIEF ENGINEER