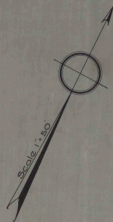
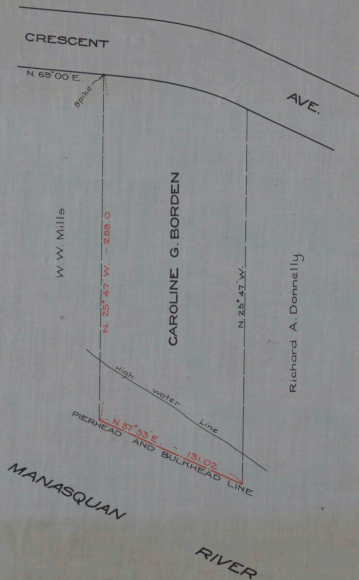


Make
a copy
of this
map



Nº 177
STATE OF NEW JERSEY
BOARD OF COMMERCE AND NAVIGATION
MAP SHOWING
PIERHEAD AND BULKHEAD LINE
ESTABLISHED JUNE 16, 1924.

Carroll
Monmouth
County

Approved with
James B. Keating
R. P. Eagle
W. H. G. Cook
W. P. Barber

Witness:-

CABINET A

ARCH. NO. 21

DIRECTOR AND CHIEF ENGINEER

FOUNDER NO. _____

SHEET NO. 41