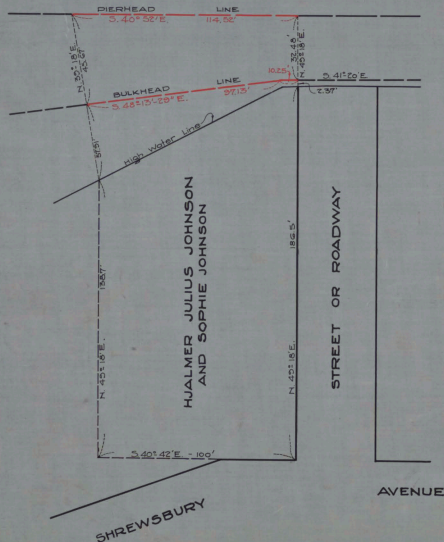
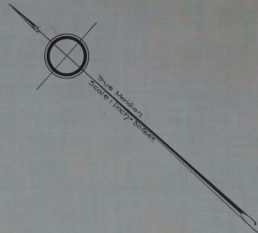


112-1023

NORTH SHREWSBURY

RIVER



NO. 188

STATE OF NEW JERSEY  
BOARD OF COMMERCE AND NAVIGATION.  
MAP SHOWING  
PIERHEAD LINE AND BULKHEAD LINE  
ON SHREWSBURY RIVER  
IN THE BOROUGH OF HIGHLANDS  
COUNTY OF MONMOUTH  
ADOPTED APRIL 20, 1925.

*Augustus Smith*  
*Charles G. Johnson*  
*W. J. Anderson*  
*W. J. Anderson*  
*Mr. Parker Simpson*  
*Augustus Smith*  
*William D. Smith*

CABINET AARM NO. 31FOLDER NO. SHEET NO. 7

ATTEST.

*Victor Gilman*  
DIRECTOR AND CHIEF ENGINEER