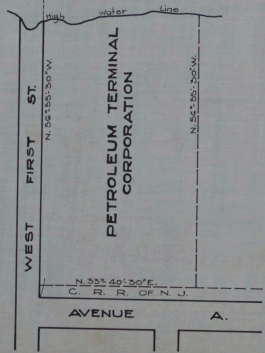
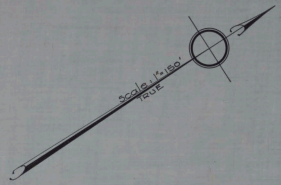
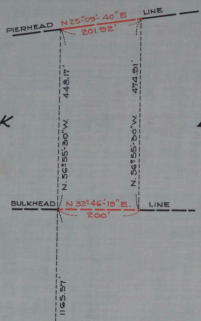


CABINET A
 ARCH. NO. 31
 FOLDER NO. _____
 SHEET NO. 9

NEWARK

BAY



No. 190

STATE OF NEW JERSEY
 BOARD OF COMMERCE AND NAVIGATION
 MAP SHOWING
 PIERHEAD AND BULKHEAD LINES ON
 NEWARK BAY
 IN THE CITY OF BAYONNE,
 COUNTY OF HUDSON
 ADOPTED MAY 18, 1925.

- J. *Peter J. Furman*
- E. *R. P. Eagle*
- R. *Mr. Parker Ramsey*
- S. *W. J. Gardner*
- A. *William T. Wash*
- Augusta Smith*

ATTEST

Victor Kellman
 DIRECTOR AND CHIEF ENGINEER