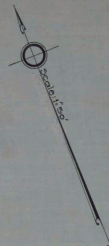
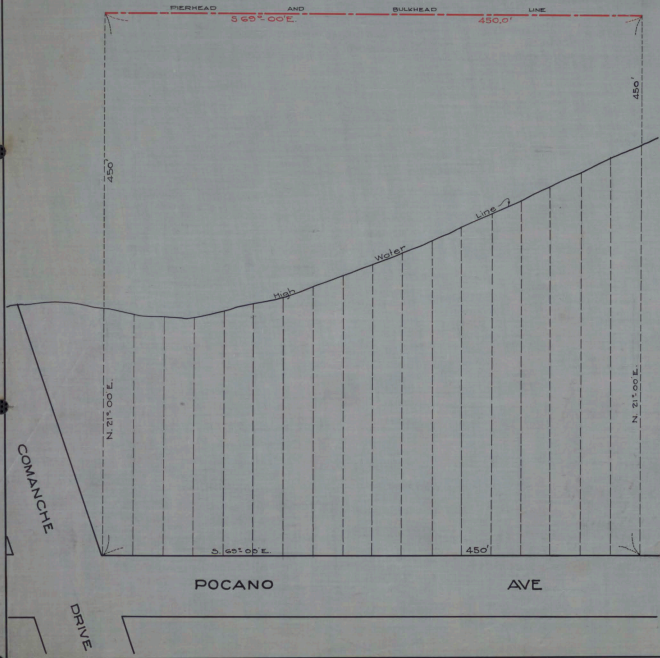


112-163L

SOUTH SHREWSBURY RIVER



CABINET	A	ARM NO.	31	FOLDER NO.	10
---------	---	---------	----	------------	----



No. 191  
 STATE OF NEW JERSEY  
 BOARD OF COMMERCE AND NAVIGATION  
 MAP SHOWING  
 PIERHEAD AND BULKHEAD LINE ON  
 SOUTH SHREWSBURY RIVER  
 IN THE BOROUGH OF OCEANPORT IN THE  
 COUNTY OF MONMOUTH  
 ADOPTED OCT. 20, 1924.

*Richard Johnston*  
*R. S. Eagle*  
*W. Parker Ramseyer*  
*W. J. ...*  
*William ...*  
*Augustus Smith*

ATTEST  
*Victor Gelinas*  
 DIRECTOR AND CHIEF ENGINEER.